

Datasheet for ABIN5611261
anti-MME antibody (AA 549-750)



[Go to Product page](#)

5 Images

Overview

Quantity:	100 µL
Target:	MME
Binding Specificity:	AA 549-750
Reactivity:	Human
Host:	Mouse
Clonality:	Monoclonal
Conjugate:	This MME antibody is un-conjugated
Application:	Flow Cytometry (FACS), Immunohistochemistry (IHC), ELISA

Product Details

Purpose:	CD10 Antibody
Immunogen:	Purified recombinant fragment of human CD10 (AA: 549-750) expressed in E. Coli.
Clone:	3G6B11
Isotype:	IgG1
Purification:	Purified antibody

Target Details

Target:	MME
Alternative Name:	CD10 (MME Products)
Background:	Description: This gene encodes a common acute lymphocytic leukemia antigen that is an

Target Details

important cell surface marker in the diagnosis of human acute lymphocytic leukemia (ALL). This protein is present on leukemic cells of pre-B phenotype, which represent 85 % of cases of ALL. This protein is not restricted to leukemic cells, however, and is found on a variety of normal tissues. It is a glycoprotein that is particularly abundant in kidney, where it is present on the brush border of proximal tubules and on glomerular epithelium. The protein is a neutral endopeptidase that cleaves peptides at the amino side of hydrophobic residues and inactivates several peptide hormones including glucagon, enkephalins, substance P, neurotensin, oxytocin, and bradykinin. This gene, which encodes a 100-kD type II transmembrane glycoprotein, exists in a single copy of greater than 45 kb. The 5' untranslated region of this gene is alternatively spliced, resulting in four separate mRNA transcripts. The coding region is not affected by alternative splicing.

Aliases: NEP, SFE, MME, CALLA, CMT2T, SCA43

Molecular Weight:	85.5kDa
Gene ID:	4311
HGNC:	4311
UniProt:	P08473
Pathways:	RTK Signaling , Peptide Hormone Metabolism , Regulation of Systemic Arterial Blood Pressure by Hormones , Smooth Muscle Cell Migration

Application Details

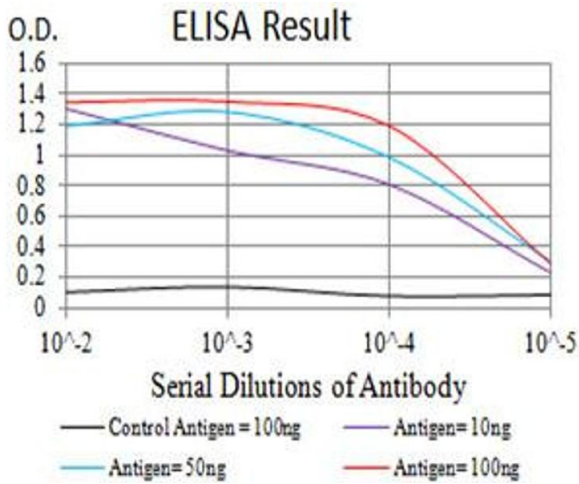
Application Notes:	ELISA: 1/10000 FCM: 1/200 - 1/400
Restrictions:	For Research Use only

Handling

Format:	Liquid
Buffer:	Purified antibody in PBS with 0.05 % sodium azide.
Preservative:	Sodium azide
Precaution of Use:	This product contains Sodium azide: a POISONOUS AND HAZARDOUS SUBSTANCE which should be handled by trained staff only.
Storage:	4 °C, -20 °C

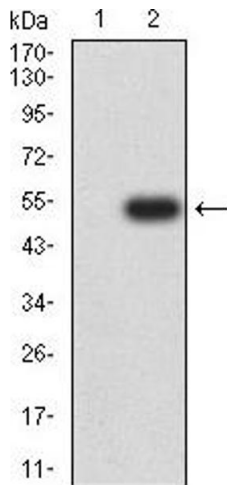
Storage Comment: Store at 4°C short term. Aliquot and store at -20°C long term. Avoid freeze/thaw cycles.

Images



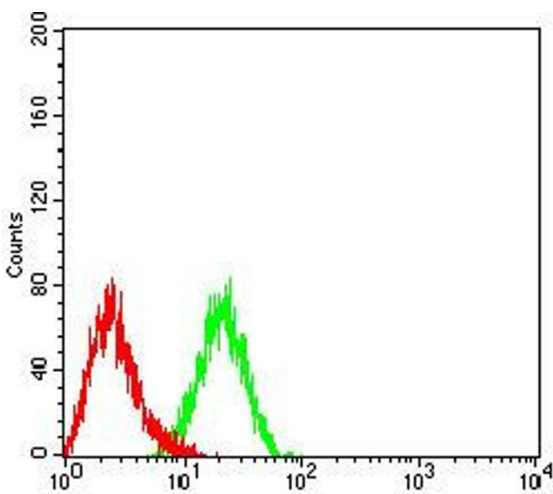
ELISA

Image 1. Black line: Control Antigen (100 ng),Purple line: Antigen (10 ng), Blue line: Antigen (50 ng), Red line:Antigen (100 ng)



Western Blotting

Image 2. Western blot analysis using CD10 mAb against HEK293 (1) and CD10 (AA: extra 549-750)-hIgGFc transfected HEK293 (2) cell lysate.



Flow Cytometry

Image 3. Flow cytometric analysis of HL-60 cells using CD10 mouse mAb (green) and negative control (red).

Please check the [product details page](#) for more images. Overall 5 images are available for ABIN5611261.