



[Go to Product page](#)

Datasheet for ABIN5611265
anti-CD161 antibody (AA 67-225)

4 Images

Overview

Quantity:	0.1 mg
Target:	CD161 (KLRB1)
Binding Specificity:	AA 67-225
Reactivity:	Human
Host:	Mouse
Clonality:	Monoclonal
Application:	Flow Cytometry (FACS), Western Blotting (WB), Immunohistochemistry (IHC), ELISA, Immunocytochemistry (ICC), Neutralization (Neut)

Product Details

Immunogen:	Purified recombinant fragment of human CD161 (AA: extra 67-225) expressed in E. coli.
Clone:	4C6A11
Isotype:	IgG2b
Purification:	purified

Target Details

Target:	CD161 (KLRB1)
Alternative Name:	CD161 (KLRB1 Products)
Background:	Description: Natural killer (NK) cells are lymphocytes that mediate cytotoxicity and secrete cytokines after immune stimulation. Several genes of the C-type lectin superfamily, including the rodent NKRP1 family of glycoproteins, are expressed by NK cells and may be involved in the

Target Details

regulation of NK cell function. The KLRB1 protein contains an extracellular domain with several motifs characteristic of C-type lectins, a transmembrane domain, and a cytoplasmic domain. The KLRB1 protein is classified as a type II membrane protein because it has an external C terminus.

Aliases: KLRB1, NKR, CLEC5B, NKR-P1, NKRP1A, NKR-P1A, hNKR-P1A

Molecular Weight:	25.4 kDa
-------------------	----------

Gene ID:	3820
----------	------

HGNC:	3820
-------	------

Application Details

Application Notes:	ELISA: 1:10000, WB: 1:500 - 1:2000, ICC: N/A, FCM: 1:200 - 1:400, IHC: N/A
--------------------	--

Restrictions:	For Research Use only
---------------	-----------------------

Handling

Format:	Liquid
---------	--------

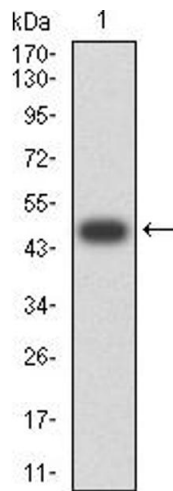
Buffer:	Purified antibody in PBS with 0.05 % sodium azide
---------	---

Preservative:	Sodium azide
---------------	--------------

Precaution of Use:	This product contains Sodium azide: a POISONOUS AND HAZARDOUS SUBSTANCE which should be handled by trained staff only.
--------------------	--

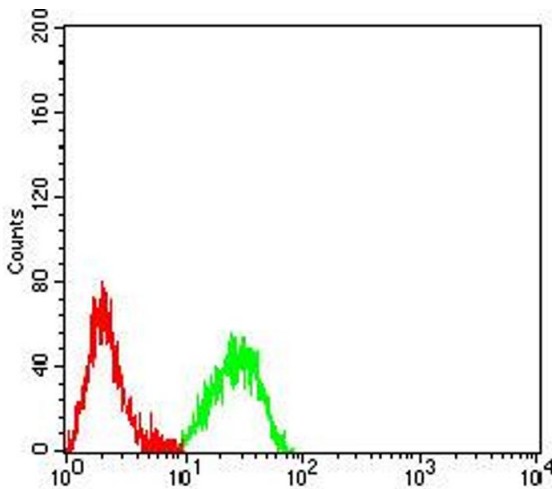
Storage:	4 °C/-20 °C
----------	-------------

Storage Comment:	4°C, -20°C for long term storage
------------------	----------------------------------



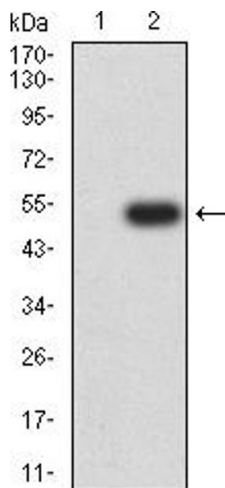
Western Blotting

Image 1. Western blot analysis using CD161 mAb against human CD161 (AA: extra 67-225) recombinant protein. (Expected MW is 48.4 kDa)



Flow Cytometry

Image 2. Flow cytometric analysis of Raji cells using CD161 mouse mAb (green) and negative control (red).



Western Blotting

Image 3. Western blot analysis using CD161 mAb against HEK293 (1) and CD161 (AA: extra 67-225)-hlgGFc transfected HEK293 (2) cell lysate.

Please check the [product details page](#) for more images. Overall 4 images are available for ABIN5611265.