

Datasheet for ABIN5611276

anti-P2RY1 antibody

8 Images

[Go to Product page](#)

Overview

Quantity:	0.1 mg
Target:	P2RY1
Reactivity:	Human, Rat
Host:	Mouse
Clonality:	Monoclonal
Application:	Western Blotting (WB), ELISA, Immunohistochemistry (IHC), Flow Cytometry (FACS), Immunocytochemistry (ICC), Neutralization (Neut)

Product Details

Immunogen:	Purified recombinant fragment of human P2RY1 (AA: extra mix) expressed in E. coli.
Clone:	4G5D6
Isotype:	IgG2b
Purification:	purified

Target Details

Target:	P2RY1
Alternative Name:	P2RY1 (P2RY1 Products)
Background:	Description: The product of this gene belongs to the family of G-protein coupled receptors. This family has several receptor subtypes with different pharmacological selectivity, which overlaps in some cases, for various adenosine and uridine nucleotides. This receptor functions as a receptor for extracellular ATP and ADP. In platelets binding to ADP leads to mobilization of

Target Details

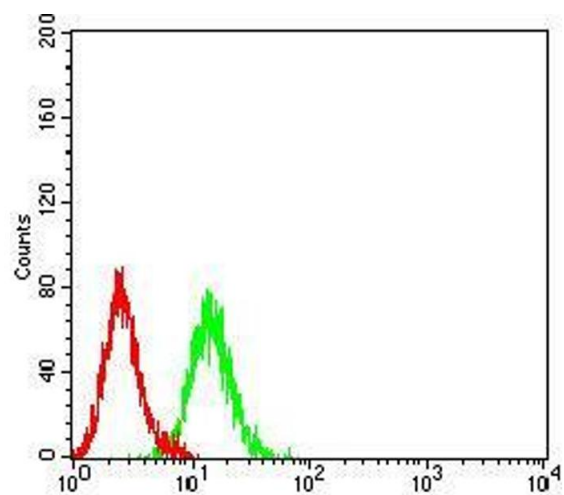
	intracellular calcium ions via activation of phospholipase C, a change in platelet shape, and probably to platelet aggregation. Aliases: P2Y1
Molecular Weight:	42 kDa
Gene ID:	5028
HGNC:	5028
Pathways:	Regulation of Carbohydrate Metabolic Process , Feeding Behaviour

Application Details

Application Notes:	ELISA: 1:10000, WB: 1:500 - 1:2000, ICC: N/A, FCM: 1:200 - 1:400, IHC: 1:200 - 1:1000
Restrictions:	For Research Use only

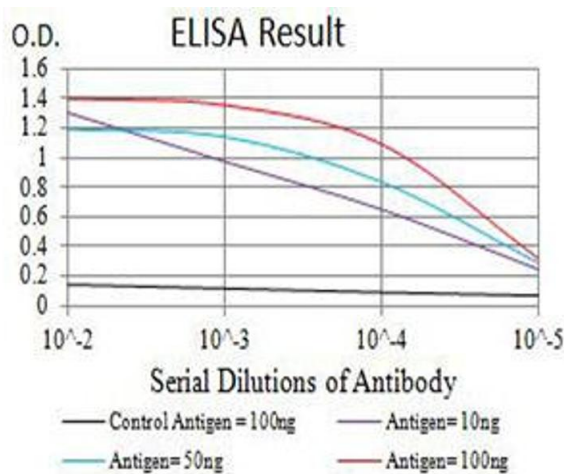
Handling

Format:	Liquid
Buffer:	Purified antibody in PBS with 0.05 % sodium azide
Preservative:	Sodium azide
Precaution of Use:	This product contains Sodium azide: a POISONOUS AND HAZARDOUS SUBSTANCE which should be handled by trained staff only.
Storage:	4 °C/-20 °C
Storage Comment:	4°C, -20°C for long term storage



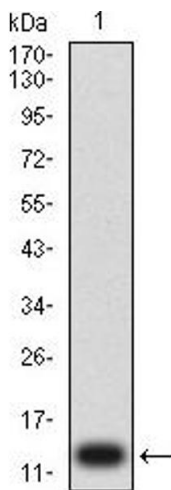
Flow Cytometry

Image 1. Flow cytometric analysis of K562 cells using P2RY1 mouse mAb (green) and negative control (red).



ELISA

Image 2. Black line: Control Antigen (100 ng), Purple line: Antigen (10 ng), Blue line: Antigen (50 ng), Red line: Antigen (100 ng)



Western Blotting

Image 3. Western blot analysis using P2RY1 mAb against human P2RY1 (AA: extra mix) recombinant protein. (Expected MW is 13 kDa)

Please check the [product details page](#) for more images. Overall 8 images are available for ABIN5611276.