

Datasheet for ABIN5611290  
**anti-ATG3 antibody (AA 1-100)**

## 8 Images

[Go to Product page](#)

## Overview

Quantity:	0.1 mg
Target:	ATG3
Binding Specificity:	AA 1-100
Reactivity:	Human, Monkey
Host:	Mouse
Clonality:	Monoclonal
Application:	Western Blotting (WB), ELISA, Immunohistochemistry (IHC), Flow Cytometry (FACS), Immunocytochemistry (ICC), Neutralization (Neut)

## Product Details

Immunogen:	Purified recombinant fragment of human ATG3 (AA: 1-100) expressed in E. coli.
Clone:	7A1D1
Isotype:	IgG1
Purification:	purified

## Target Details

Target:	ATG3
Alternative Name:	ATG3 ( <a href="#">ATG3 Products</a> )
Background:	Description: This gene encodes a ubiquitin-like-conjugating enzyme and is a component of ubiquitination-like systems involved in autophagy, the process of degradation, turnover and recycling of cytoplasmic constituents in eukaryotic cells. This protein is known to play a role in

## Target Details

regulation of autophagy during cell death. A pseudogene of this gene is located on chromosome 20. Alternative splicing results in multiple transcript variants encoding different isoforms.

Aliases: APG3, APG3L, PC3-96, APG3-LIKE

Molecular Weight: 35.9 kDa

Gene ID: 64422

HGNC: 64422

Pathways: [Autophagy](#)

## Application Details

Application Notes: ELISA: 1:10000, WB: 1:500 - 1:2000, ICC: 1:200 - 1:1000, FCM: N/A, IHC: 1:200 - 1:1000

Restrictions: For Research Use only

## Handling

Format: Liquid

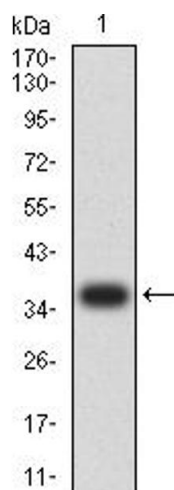
Buffer: Purified antibody in PBS with 0.05 % sodium azide

Preservative: Sodium azide

Precaution of Use: This product contains Sodium azide: a POISONOUS AND HAZARDOUS SUBSTANCE which should be handled by trained staff only.

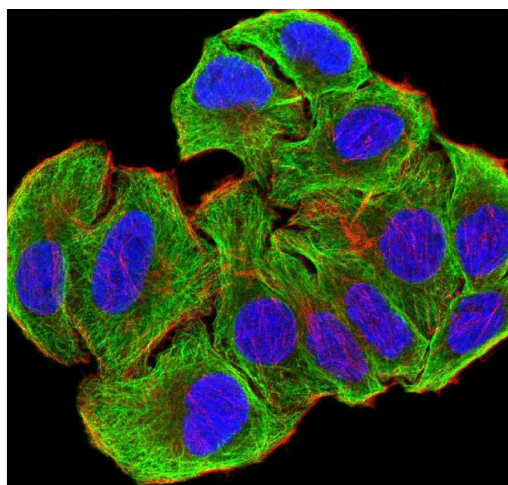
Storage: 4 °C/-20 °C

Storage Comment: 4°C, -20°C for long term storage



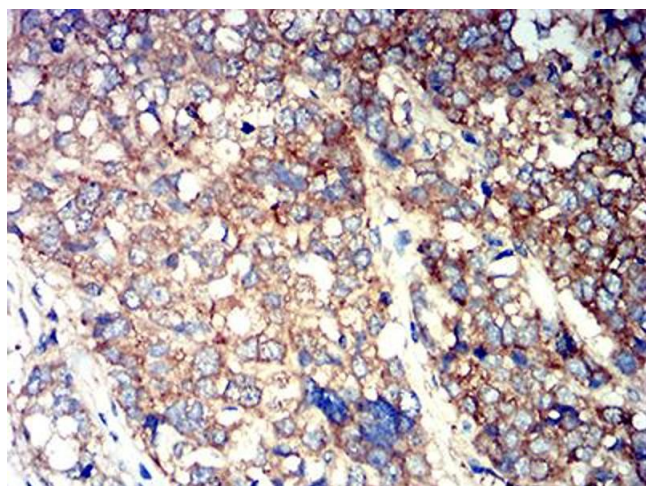
#### Western Blotting

**Image 1.** Western blot analysis using ATG3 mAb against human ATG3 (AA: 1-100) recombinant protein. (Expected MW is 37.3 kDa)



#### Immunofluorescence

**Image 2.** Immunofluorescence analysis of SMMC-7721 cells using ATG3 mouse mAb (green). Blue: DRAQ5 fluorescent DNA dye. Red: Actin filaments have been labeled with Alexa Fluor-555 phalloidin. Secondary antibody from Fisher (Cat#: 35503)



#### Immunohistochemistry

**Image 3.** Immunohistochemical analysis of paraffin-embedded breast cancer tissues using ATG3 mouse mAb with DAB staining.

Please check the [product details page](#) for more images. Overall 8 images are available for ABIN5611290.