

Datasheet for ABIN5611291  
**anti-ATG3 antibody (AA 1-100)**



[Go to Product page](#)

8 Images

## Overview

Quantity:	100 µL
Target:	ATG3
Binding Specificity:	AA 1-100
Reactivity:	Human
Host:	Mouse
Clonality:	Monoclonal
Conjugate:	This ATG3 antibody is un-conjugated
Application:	Western Blotting (WB), ELISA, Immunohistochemistry (IHC), Flow Cytometry (FACS), Immunocytochemistry (ICC)

## Product Details

Purpose:	ATG3 Antibody
Immunogen:	Purified recombinant fragment of human ATG3 (AA: 1-100) expressed in E. Coli.
Clone:	2C10A12
Isotype:	IgG1
Purification:	Purified antibody

## Target Details

Target:	ATG3
Alternative Name:	ATG3 ( <a href="#">ATG3 Products</a> )

## Target Details

---

Background:	Description: This gene encodes a ubiquitin-like-conjugating enzyme and is a component of ubiquitination-like systems involved in autophagy, the process of degradation, turnover and recycling of cytoplasmic constituents in eukaryotic cells. This protein is known to play a role in regulation of autophagy during cell death. A pseudogene of this gene is located on chromosome 20. Alternative splicing results in multiple transcript variants encoding different isoforms. Aliases: APG3, APG3L, PC3-96, APG3-LIKE
Molecular Weight:	35.9kDa
Gene ID:	64422
HGNC:	64422
UniProt:	<a href="#">Q9NT62</a>
Pathways:	<a href="#">Autophagy</a>

## Application Details

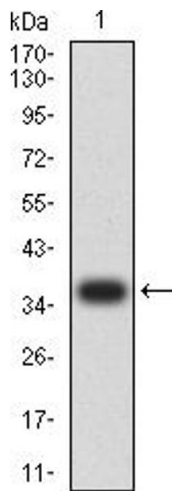
---

Application Notes:	ELISA: 1/10000 FCM: 1/200 - 1/400 ICC: 1/200 - 1/1000
Restrictions:	For Research Use only

## Handling

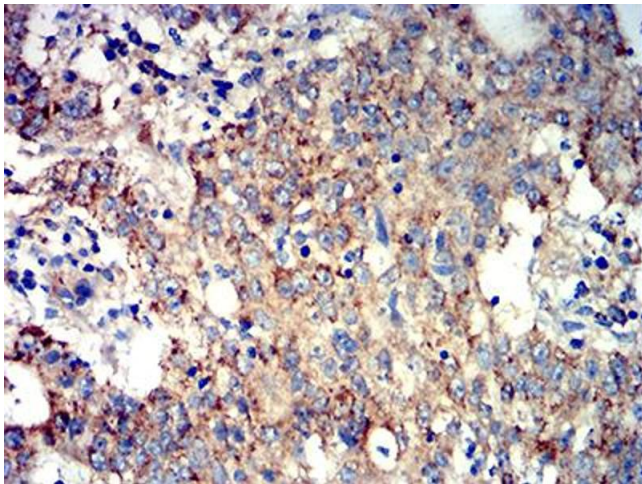
---

Format:	Liquid
Buffer:	Purified antibody in PBS with 0.05 % sodium azide.
Preservative:	Sodium azide
Precaution of Use:	This product contains Sodium azide: a POISONOUS AND HAZARDOUS SUBSTANCE which should be handled by trained staff only.
Storage:	4 °C,-20 °C
Storage Comment:	Store at 4°C short term. Aliquot and store at -20°C long term. Avoid freeze/thaw cycles.



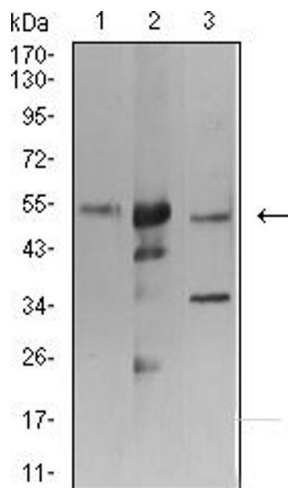
### Western Blotting

**Image 1.** Western blot analysis using ATG3 mAb against human ATG3 (AA: 1-100) recombinant protein. (Expected MW is 37.3 kDa)



### Immunohistochemistry

**Image 2.** Immunohistochemical analysis of paraffin-embedded stomach cancer tissues using ATG3 mouse mAb with DAB staining.



### Western Blotting

**Image 3.** Western blot analysis using ATG3 mouse mAb against K562 (1), HeLa (2), and THP-1 (3) cell lysate.

Please check the [product details page](#) for more images. Overall 8 images are available for ABIN5611291.