



[Go to Product page](#)

Datasheet for ABIN5611292
anti-ATG4C antibody (AA 321-458)

4 Images

Overview

Quantity:	0.1 mg
Target:	ATG4C
Binding Specificity:	AA 321-458
Reactivity:	Human
Host:	Mouse
Clonality:	Monoclonal
Conjugate:	This ATG4C antibody is un-conjugated
Application:	Western Blotting (WB), ELISA, Immunohistochemistry (IHC), Immunocytochemistry (ICC), Flow Cytometry (FACS), Neutralization (Neut)

Product Details

Immunogen:	Purified recombinant fragment of human ATG4C (AA: 321-458) expressed in E. coli.
Clone:	2E10H7
Isotype:	IgG1
Purification:	purified

Target Details

Target:	ATG4C
Alternative Name:	ATG4C (ATG4C Products)
Background:	Description: Autophagy is the process by which endogenous proteins and damaged organelles

Target Details

are destroyed intracellularly. Autophagy is postulated to be essential for cell homeostasis and cell remodeling during differentiation, metamorphosis, non-apoptotic cell death, and aging. Reduced levels of autophagy have been described in some malignant tumors, and a role for autophagy in controlling the unregulated cell growth linked to cancer has been proposed. This gene encodes a member of the autophagin protein family. The encoded protein is also designated as a member of the C-54 family of cysteine proteases. Alternate transcriptional splice variants, encoding the same protein, have been characterized.

Aliases: APG4C, AUTL1, AUTL3, APG4-C

Molecular Weight: 52.5 kDa

Gene ID: 84938

HGNC: 84938

Pathways: [Autophagy](#)

Application Details

Application Notes: ELISA: 1:10000, WB: 1:500 - 1:2000, ICC: N/A, FCM: N/A, IHC: N/A

Restrictions: For Research Use only

Handling

Format: Liquid

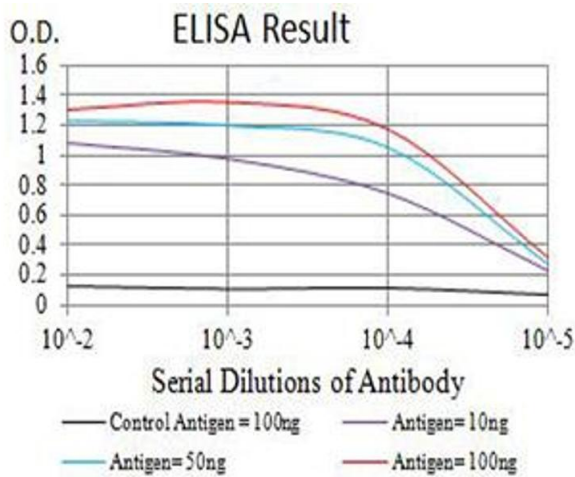
Buffer: Purified antibody in PBS with 0.05 % sodium azide

Preservative: Sodium azide

Precaution of Use: This product contains Sodium azide: a POISONOUS AND HAZARDOUS SUBSTANCE which should be handled by trained staff only.

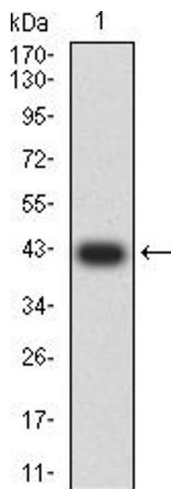
Storage: 4 °C/-20 °C

Storage Comment: 4°C, -20°C for long term storage



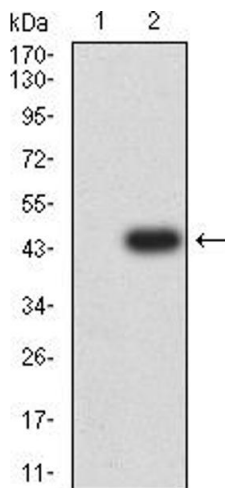
ELISA

Image 1. Black line: Control Antigen (100 ng), Purple line: Antigen (10 ng), Blue line: Antigen (50 ng), Red line: Antigen (100 ng)



Western Blotting

Image 2. Western blot analysis using ATG4C mAb against human ATG4C (AA: 321-458) recombinant protein. (Expected MW is 42.2 kDa)



Western Blotting

Image 3. Western blot analysis using ATG4C mAb against HEK293 (1) and ATG4C (AA: 321-458)-hlgGFc transfected HEK293 (2) cell lysate.

Please check the [product details page](#) for more images. Overall 4 images are available for ABIN5611292.