

Datasheet for ABIN5611296
anti-ASH2L antibody (AA 493-628)

5 Images

[Go to Product page](#)

Overview

Quantity:	0.1 mg
Target:	ASH2L
Binding Specificity:	AA 493-628
Reactivity:	Human
Host:	Mouse
Clonality:	Monoclonal
Application:	Western Blotting (WB), ELISA, Immunohistochemistry (IHC), Immunocytochemistry (ICC), Flow Cytometry (FACS), Neutralization (Neut)

Product Details

Immunogen:	Purified recombinant fragment of human ASH2L (AA: 493-628) expressed in E. coli.
Clone:	6B10H10
Isotype:	IgG1
Purification:	purified

Target Details

Target:	ASH2L
Alternative Name:	ASH2L (ASH2L Products)
Background:	Description: ASH2L (ASH2 Like Histone Lysine Methyltransferase Complex Subunit) is a Protein Coding gene. Diseases associated with ASH2L include Kabuki Syndrome 1. Among its related pathways are Chromatin organization and Signaling by GPCR. GO annotations related to this

Target Details

	gene include transcription regulatory region DNA binding and histone methyltransferase activity (H3-K4 specific). Aliases: ASH2, Bre2, ASH2L1, ASH2L2
Molecular Weight:	68.7 kDa
Gene ID:	9070
HGNC:	9070

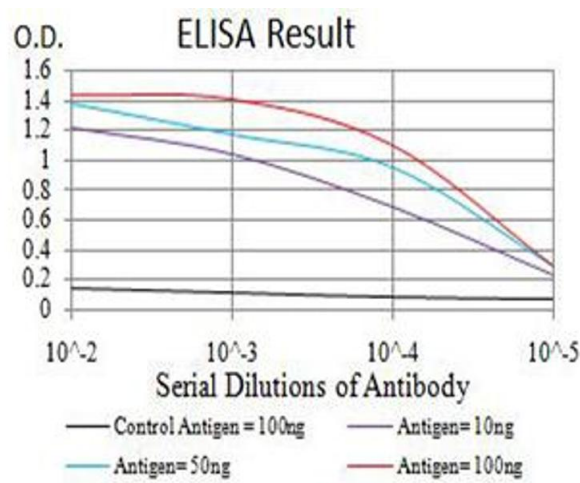
Application Details

Application Notes:	ELISA: 1:10000, WB: 1:500 - 1:2000, ICC: N/A, FCM: N/A, IHC: 1:200 - 1:1000
Restrictions:	For Research Use only

Handling

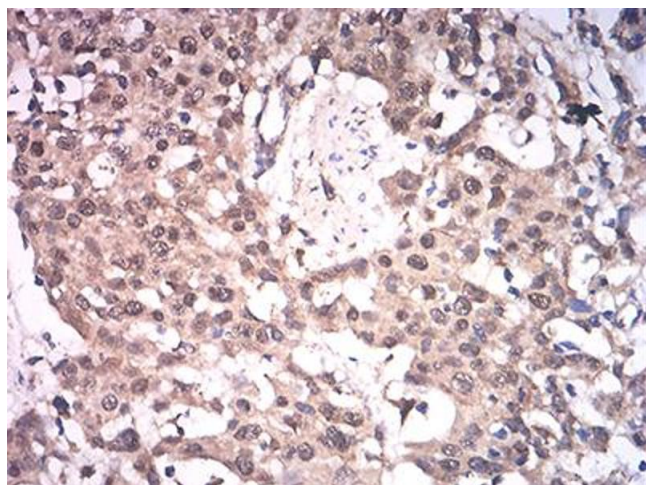
Format:	Liquid
Buffer:	Purified antibody in PBS with 0.05 % sodium azide
Preservative:	Sodium azide
Precaution of Use:	This product contains Sodium azide: a POISONOUS AND HAZARDOUS SUBSTANCE which should be handled by trained staff only.
Storage:	4 °C/-20 °C
Storage Comment:	4°C, -20°C for long term storage

Images



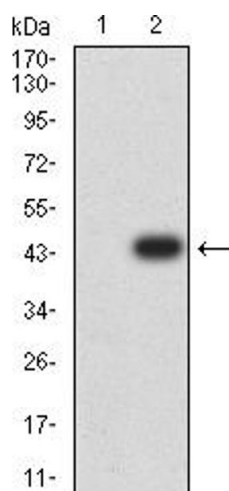
ELISA

Image 1. Black line: Control Antigen (100 ng),Purple line: Antigen (10 ng), Blue line: Antigen (50 ng), Red line:Antigen (100 ng)



Immunohistochemistry

Image 2. Immunohistochemical analysis of paraffin-embedded esophageal cancer tissues using ASH2L mouse mAb with DAB staining.



Western Blotting

Image 3. Western blot analysis using ASH2L mAb against HEK293 (1) and ASH2L (AA: 493-628)-hlgGfC transfected HEK293 (2) cell lysate.

Please check the [product details page](#) for more images. Overall 5 images are available for ABIN5611296.