

Datasheet for ABIN5611300
anti-BCL11B antibody (AA 1-150)[Go to Product page](#)

4 Images

Overview

Quantity:	0.1 mg
Target:	BCL11B
Binding Specificity:	AA 1-150
Reactivity:	Human
Host:	Mouse
Clonality:	Monoclonal
Application:	Western Blotting (WB), ELISA, Immunohistochemistry (IHC), Immunocytochemistry (ICC), Flow Cytometry (FACS), Neutralization (Neut)

Product Details

Immunogen:	Purified recombinant fragment of human BCL11B (AA: 1-150) expressed in E. coli.
Clone:	1F8H9
Isotype:	IgG1
Purification:	purified

Target Details

Target:	BCL11B
Alternative Name:	BCL11B (BCL11B Products)
Background:	Description: This gene encodes a C2H2-type zinc finger protein and is closely related to BCL11A, a gene whose translocation may be associated with B-cell malignancies. Although the specific function of this gene has not been determined, the encoded protein is known to be a

Target Details

transcriptional repressor, and is regulated by the NURD nucleosome remodeling and histone deacetylase complex. Four alternatively spliced transcript variants encoding distinct isoforms have been found for this gene.

Aliases: ATL1, RIT1, CTIP2, IMD49, CTIP-2, ZNF856B, ATL1-beta, ATL1-alpha, ATL1-delta, ATL1-gamma, hRIT1-alpha

Molecular Weight:	95.5 kDa
-------------------	----------

Gene ID:	64919
----------	-------

HGNC:	64919
-------	-------

Application Details

Application Notes:	ELISA: 1:10000, WB: 1:500 - 1:2000, ICC: N/A, FCM: 1:200 - 1:400, IHC: N/A
--------------------	--

Restrictions:	For Research Use only
---------------	-----------------------

Handling

Format:	Liquid
---------	--------

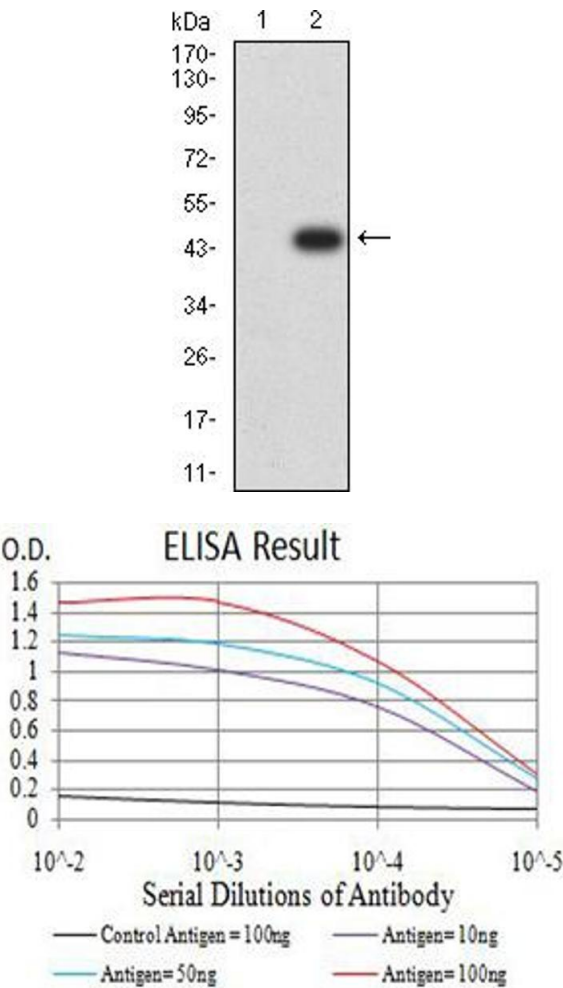
Buffer:	Purified antibody in PBS with 0.05 % sodium azide
---------	---

Preservative:	Sodium azide
---------------	--------------

Precaution of Use:	This product contains Sodium azide: a POISONOUS AND HAZARDOUS SUBSTANCE which should be handled by trained staff only.
--------------------	--

Storage:	4 °C/-20 °C
----------	-------------

Storage Comment:	4°C, -20°C for long term storage
------------------	----------------------------------

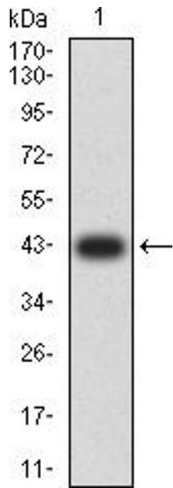


Western Blotting

Image 1. Western blot analysis using BCL11B mAb against HEK293 (1) and BCL11B (AA: 1-150)-hlgGFc transfected HEK293 (2) cell lysate.

ELISA

Image 2. Black line: Control Antigen (100 ng),Purple line: Antigen (10 ng), Blue line: Antigen (50 ng), Red line:Antigen (100 ng)



Western Blotting

Image 3. Western blot analysis using BCL11B mAb against human BCL11B (AA: 1-150) recombinant protein. (Expected MW is 42.3 kDa)

Please check the [product details page](#) for more images. Overall 4 images are available for ABIN5611300.