

Datasheet for ABIN5611301
anti-BCL11B antibody (AA 1-150)



[Go to Product page](#)

8 Images

Overview

Quantity:	100 µL
Target:	BCL11B
Binding Specificity:	AA 1-150
Reactivity:	Human
Host:	Mouse
Clonality:	Monoclonal
Conjugate:	This BCL11B antibody is un-conjugated
Application:	ELISA, Immunohistochemistry (IHC), Immunocytochemistry (ICC), Flow Cytometry (FACS)

Product Details

Purpose:	BCL11B Antibody
Immunogen:	Purified recombinant fragment of human BCL11B (AA: 1-150) expressed in E. Coli.
Clone:	1F8G8
Isotype:	IgG1
Purification:	Purified antibody

Target Details

Target:	BCL11B
Alternative Name:	BCL11B (BCL11B Products)
Background:	Description: This gene encodes a C2H2-type zinc finger protein and is closely related to

Target Details

BCL11A, a gene whose translocation may be associated with B-cell malignancies. Although the specific function of this gene has not been determined, the encoded protein is known to be a transcriptional repressor, and is regulated by the NURD nucleosome remodeling and histone deacetylase complex. Four alternatively spliced transcript variants encoding distinct isoforms have been found for this gene.

Aliases: ATL1, RIT1, CTIP2, IMD49, CTIP-2, ZNF856B, ATL1-beta, ATL1-alpha, ATL1-delta, ATL1-gamma, hRIT1-alpha

Molecular Weight: 95.5kDa

Gene ID: 64919

HGNC: 64919

UniProt: [Q9C0K0](#)

Application Details

Application Notes: ELISA: 1/10000
FCM: 1/200 - 1/400
ICC: 1/50 - 1/250

Restrictions: For Research Use only

Handling

Format: Liquid

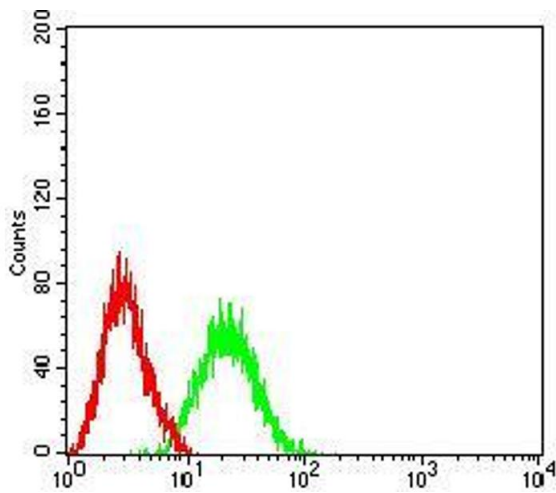
Buffer: Purified antibody in PBS with 0.05 % sodium azide.

Preservative: Sodium azide

Precaution of Use: This product contains Sodium azide: a POISONOUS AND HAZARDOUS SUBSTANCE which should be handled by trained staff only.

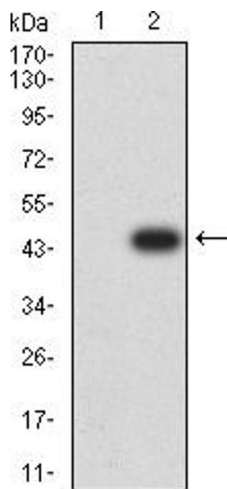
Storage: 4 °C, -20 °C

Storage Comment: Store at 4°C short term. Aliquot and store at -20°C long term. Avoid freeze/thaw cycles.



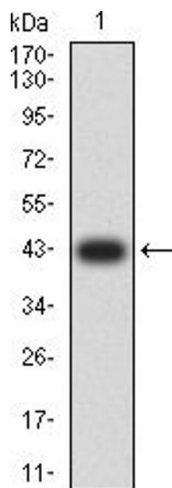
Flow Cytometry

Image 1. Flow cytometric analysis of Jurkat cells using BCL11B mouse mAb (green) and negative control (red).



Western Blotting

Image 2. Western blot analysis using BCL11B mAb against HEK293 (1) and BCL11B (AA: 1-150)-hlgGFc transfected HEK293 (2) cell lysate.



Western Blotting

Image 3. Western blot analysis using BCL11B mAb against human BCL11B (AA: 1-150) recombinant protein. (Expected MW is 42.3 kDa)

Please check the [product details page](#) for more images. Overall 8 images are available for ABIN5611301.