

Datasheet for ABIN5611302  
**anti-BCL2L10 antibody (AA 31-186)**[Go to Product page](#)

## 7 Images

## Overview

Quantity:	0.1 mg
Target:	BCL2L10
Binding Specificity:	AA 31-186
Reactivity:	Human
Host:	Mouse
Clonality:	Monoclonal
Application:	Western Blotting (WB), ELISA, Immunocytochemistry (ICC), Immunohistochemistry (IHC), Flow Cytometry (FACS)

## Product Details

Immunogen:	Purified recombinant fragment of human BCL2L10 (AA: 31-186) expressed in E. coli.
Clone:	8A2F9
Isotype:	IgG1
Purification:	purified

## Target Details

Target:	BCL2L10
Alternative Name:	BCL2L10 ( <a href="#">BCL2L10 Products</a> )
Background:	Description: The protein encoded by this gene belongs to the BCL-2 protein family. BCL-2 family members form hetero- or homodimers and act as anti- or pro-apoptotic regulators that are involved in a wide variety of cellular activities. The protein encoded by this gene contains

## Target Details

conserved BH4, BH1 and BH2 domains. This protein can interact with other members of BCL-2 protein family including BCL2, BCL2L1/BCL-X(L), and BAX. Overexpression of this gene has been shown to suppress cell apoptosis possibly through the prevention of cytochrome C release from the mitochondria, and thus activating caspase-3 activation. The mouse counterpart of this protein is found to interact with Apaf1 and forms a protein complex with Caspase 9, which suggests the involvement of this protein in APAF1 and CASPASE 9 related apoptotic pathway.

Aliases: Boo, Diva, BCL-B, bcl2-L-10

Molecular Weight: 22 kDa

Gene ID: 10017

HGNC: 10017

Pathways: [Positive Regulation of Endopeptidase Activity](#)

## Application Details

Application Notes: ELISA: 1:10000, WB: 1:500 - 1:2000, ICC: 1:200 - 1:1000, FCM: 1:200 - 1:400, IHC: 1:200 - 1:1000

Restrictions: For Research Use only

## Handling

Format: Liquid

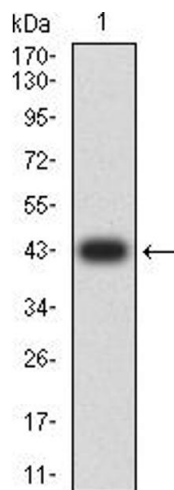
Buffer: Purified antibody in PBS with 0.05 % sodium azide

Preservative: Sodium azide

Precaution of Use: This product contains Sodium azide: a POISONOUS AND HAZARDOUS SUBSTANCE which should be handled by trained staff only.

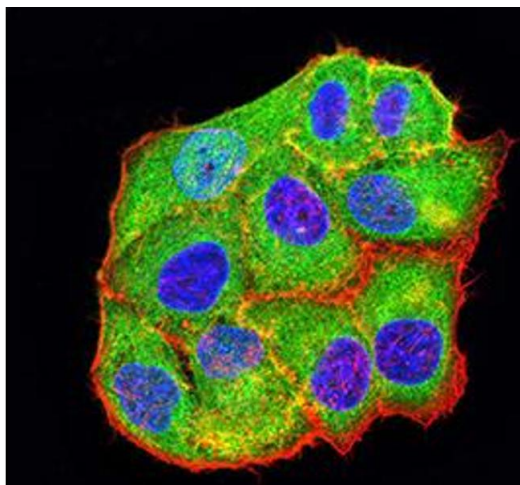
Storage: 4 °C/-20 °C

Storage Comment: 4°C, -20°C for long term storage



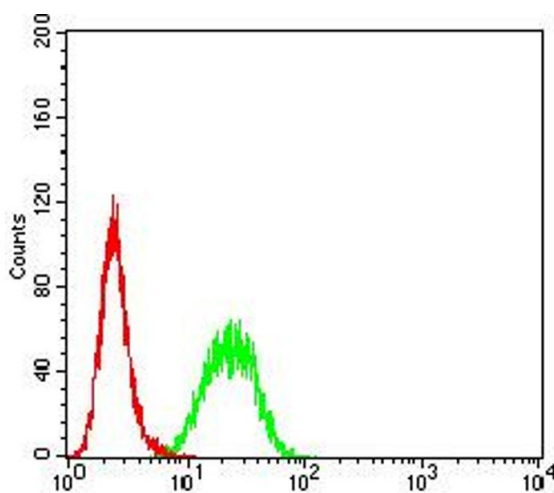
### Western Blotting

**Image 1.** Western blot analysis using BCL2L10 mAb against human BCL2L10 (AA: 31-186) recombinant protein. (Expected MW is 43.1 kDa)



### Immunofluorescence

**Image 2.** Immunofluorescence analysis of HeLa cells using BCL2L10 mouse mAb (green). Blue: DRAQ5 fluorescent DNA dye. Red: Actin filaments have been labeled with Alexa Fluor-555 phalloidin. Secondary antibody from Fisher (Cat#: 35503)



### Flow Cytometry

**Image 3.** Flow cytometric analysis of HeLa cells using BCL2L10 mouse mAb (green) and negative control (red).

Please check the [product details page](#) for more images. Overall 7 images are available for ABIN5611302.