



[Go to Product page](#)

Datasheet for ABIN5611311
anti-CHRN2 antibody (AA 26-233)

4 Images

Overview

Quantity:	0.1 mg
Target:	CHRN2
Binding Specificity:	AA 26-233
Reactivity:	Human
Host:	Mouse
Clonality:	Monoclonal
Application:	Western Blotting (WB), ELISA, Immunohistochemistry (IHC), Immunocytochemistry (ICC), Flow Cytometry (FACS), Neutralization (Neut)

Product Details

Immunogen:	Purified recombinant fragment of human CHRN2 (AA: extra 26-233) expressed in E. coli.
Clone:	2D12A2
Isotype:	IgG2a
Purification:	purified

Target Details

Target:	CHRN2
Alternative Name:	CHRN2 (CHRN2 Products)
Background:	Description: Neuronal acetylcholine receptors are homo- or heteropentameric complexes composed of homologous alpha and beta subunits. They belong to a superfamily of ligand-gated ion channels which allow the flow of sodium and potassium across the plasma

Target Details

membrane in response to ligands such as acetylcholine and nicotine. This gene encodes one of several beta subunits. Mutations in this gene are associated with autosomal dominant nocturnal frontal lobe epilepsy.

Aliases: EFNL3, nAChRB2

Molecular Weight: 57 kDa

Gene ID: 1141

HGNC: 1141

Pathways: [Sensory Perception of Sound](#), [Feeding Behaviour](#)

Application Details

Application Notes: ELISA: 1:10000, WB: 1:500 - 1:2000, ICC: N/A, FCM: 1:200 - 1:400, IHC: N/A

Restrictions: For Research Use only

Handling

Format: Liquid

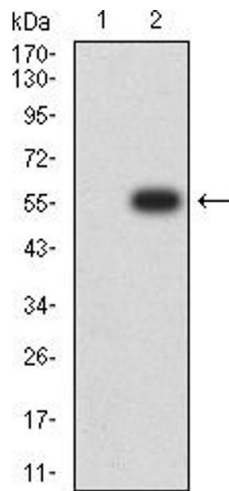
Buffer: Purified antibody in PBS with 0.05 % sodium azide

Preservative: Sodium azide

Precaution of Use: This product contains Sodium azide: a POISONOUS AND HAZARDOUS SUBSTANCE which should be handled by trained staff only.

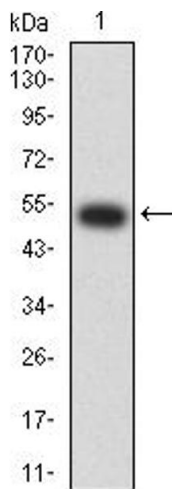
Storage: 4 °C/-20 °C

Storage Comment: 4°C, -20°C for long term storage



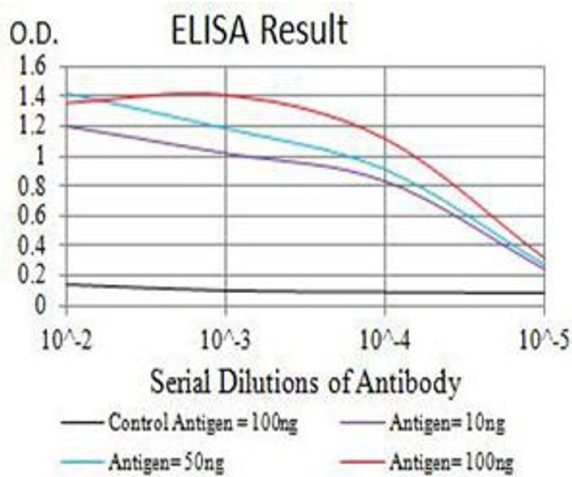
Western Blotting

Image 1. Western blot analysis using CHRN2 mAb against HEK293 (1) and CHRN2 (AA: extra 26-233)-hlgGFc transfected HEK293 (2) cell lysate.



Western Blotting

Image 2. Western blot analysis using CHRN2 mAb against human CHRN2 (AA: extra 26-233) recombinant protein. (Expected MW is 51 kDa)



ELISA

Image 3. Black line: Control Antigen (100 ng),Purple line: Antigen (10 ng), Blue line: Antigen (50 ng), Red line:Antigen (100 ng)

Please check the [product details page](#) for more images. Overall 4 images are available for ABIN5611311.