



[Go to Product page](#)

Datasheet for ABIN5611316  
**anti-C1QC antibody (AA 115-245)**

4 Images

### Overview

Quantity:	0.1 mg
Target:	C1QC
Binding Specificity:	AA 115-245
Reactivity:	Human
Host:	Mouse
Clonality:	Monoclonal
Application:	Western Blotting (WB), ELISA, Immunohistochemistry (IHC), Flow Cytometry (FACS), Immunocytochemistry (ICC), Neutralization (Neut)

### Product Details

Immunogen:	Purified recombinant fragment of human C1QC (AA: 115-245) expressed in E. coli.
Clone:	4H9D7
Isotype:	IgG1
Purification:	purified

### Target Details

Target:	C1QC
Alternative Name:	<a href="#">C1QC (C1QC Products)</a>
Background:	Description: This gene encodes the C-chain polypeptide of serum complement subcomponent C1q, which associates with C1r and C1s to yield the first component of the serum complement system. C1q is composed of 18 polypeptide chains which include 6 A-chains, 6 B-chains, and 6

## Target Details

---

C-chains. Each chain contains an N-terminal collagen-like region and a C-terminal C1q globular domain. C1q deficiency is associated with lupus erythematosus and glomerulonephritis.

Aliases: C1QG, C1Q-C

---

Molecular Weight: 25.7 kDa

---

Gene ID: 714

---

HGNC: 714

---

Pathways: [Complement System](#)

## Application Details

---

Application Notes: ELISA: 1:10000, WB: 1:500 - 1:2000, ICC: N/A, FCM: 1:200 - 1:400, IHC: N/A

---

Restrictions: For Research Use only

## Handling

---

Format: Liquid

---

Buffer: Purified antibody in PBS with 0.05 % sodium azide

---

Preservative: Sodium azide

---

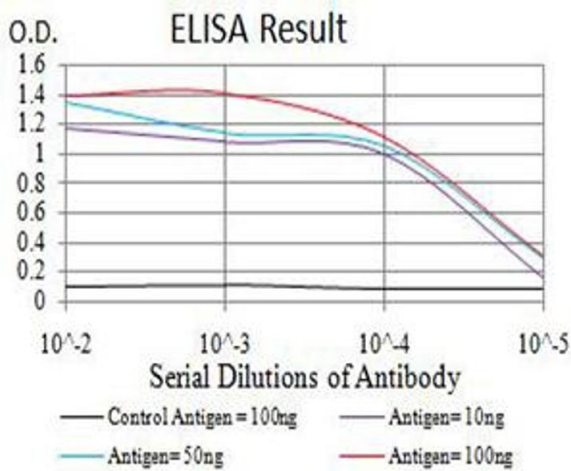
Precaution of Use: This product contains Sodium azide: a POISONOUS AND HAZARDOUS SUBSTANCE which should be handled by trained staff only.

---

Storage: 4 °C/-20 °C

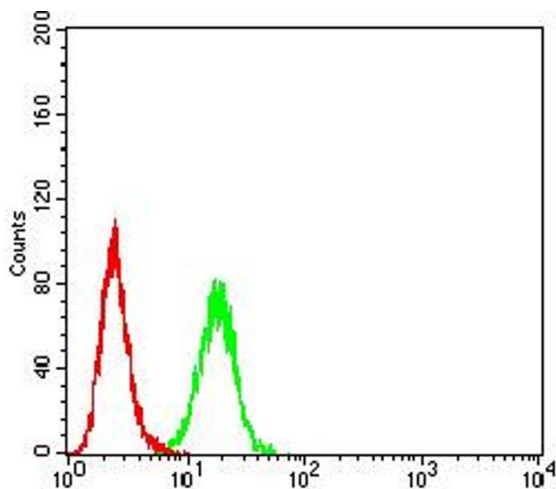
---

Storage Comment: 4°C, -20°C for long term storage



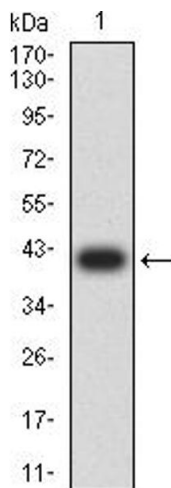
### ELISA

**Image 1.** Black line: Control Antigen (100 ng), Purple line: Antigen (10 ng), Blue line: Antigen (50 ng), Red line: Antigen (100 ng)



### Flow Cytometry

**Image 2.** Flow cytometric analysis of HeLa cells using C1QC mouse mAb (green) and negative control (red).



### Western Blotting

**Image 3.** Western blot analysis using C1QC mAb against human C1QC (AA: 115-245) recombinant protein. (Expected MW is 40 kDa)

Please check the [product details page](#) for more images. Overall 4 images are available for ABIN5611316.