



Datasheet for ABIN5611318  
**anti-CD147 antibody (AA 138-323)**



[Go to Product page](#)

5 Images

Overview

Quantity:	0.1 mg
Target:	CD147 (BSG)
Binding Specificity:	AA 138-323
Reactivity:	Human
Host:	Mouse
Clonality:	Monoclonal
Application:	Flow Cytometry (FACS), Western Blotting (WB), Immunohistochemistry (IHC), ELISA, Immunocytochemistry (ICC), Neutralization (Neut)

Product Details

Immunogen:	Purified recombinant fragment of human CD147 (AA: extra 138-323) expressed in E. coli.
Clone:	3E10C1
Isotype:	IgG1
Purification:	purified

Target Details

Target:	CD147 (BSG)
Alternative Name:	CD147 ( <a href="#">BSG Products</a> )
Background:	Description: The protein encoded by this gene is a plasma membrane protein that is important in spermatogenesis, embryo implantation, neural network formation, and tumor progression. The encoded protein is also a member of the immunoglobulin superfamily. Multiple transcript

## Target Details

variants encoding different isoforms have been found for this gene.

Aliases: BSG, OK, 5F7, TCSF, EMMPRIN

Molecular Weight: 42.2 kDa

Gene ID: 682

HGNC: 682

Pathways: [S100 Proteins](#)

## Application Details

Application Notes: ELISA: 1:10000, WB: 1:500 - 1:2000, ICC: N/A, FCM: 1:200 - 1:400, IHC: N/A

Restrictions: For Research Use only

## Handling

Format: Liquid

Buffer: Purified antibody in PBS with 0.05 % sodium azide

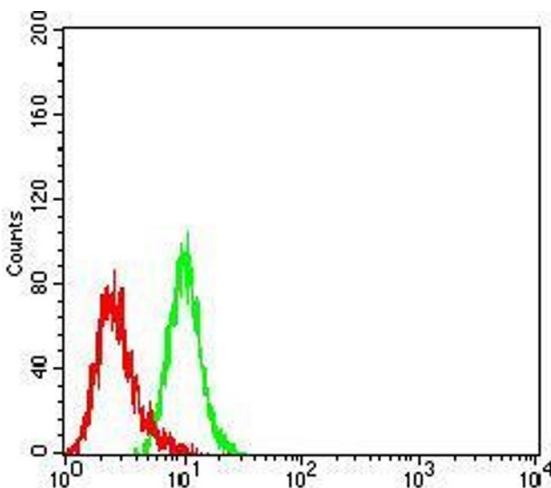
Preservative: Sodium azide

Precaution of Use: This product contains Sodium azide: a POISONOUS AND HAZARDOUS SUBSTANCE which should be handled by trained staff only.

Storage: 4 °C/-20 °C

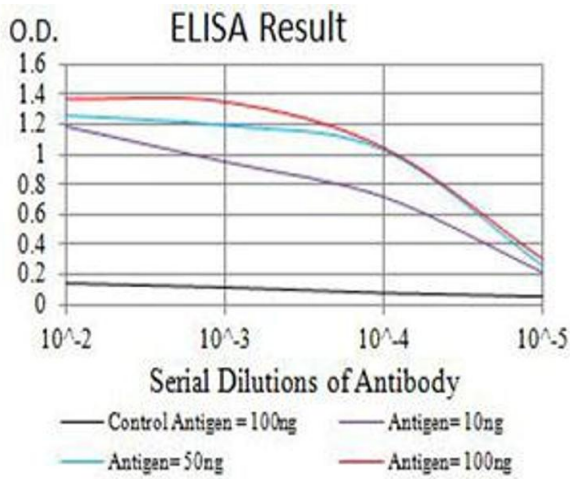
Storage Comment: 4°C, -20°C for long term storage

## Images



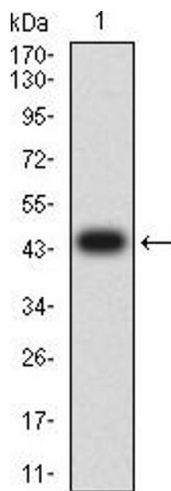
### Flow Cytometry

**Image 1.** Flow cytometric analysis of K562 cells using CD147 mouse mAb (green) and negative control (red).



### ELISA

**Image 2.** Black line: Control Antigen (100 ng),Purple line: Antigen (10 ng), Blue line: Antigen (50 ng), Red line:Antigen (100 ng)



### Western Blotting

**Image 3.** Western blot analysis using CD147 mAb against human CD147 (AA: extra 138-323) recombinant protein. (Expected MW is 46 kDa)

Please check the [product details page](#) for more images. Overall 5 images are available for ABIN5611318.