

Datasheet for ABIN5611321
anti-BTN2A2 antibody (AA 57-237)[Go to Product page](#)

6 Images

Overview

| | |
|----------------------|---|
| Quantity: | 0.1 mg |
| Target: | BTN2A2 |
| Binding Specificity: | AA 57-237 |
| Reactivity: | Human |
| Host: | Mouse |
| Clonality: | Monoclonal |
| Application: | ELISA, Western Blotting (WB), Immunohistochemistry (IHC), Immunocytochemistry (ICC), Flow Cytometry (FACS), Neutralization (Neut) |

Product Details

| | |
|---------------|--|
| Immunogen: | Purified recombinant fragment of human BTN2A2 (AA: extra 57-237) expressed in E. coli. |
| Clone: | 4B11C8 |
| Isotype: | IgG2a |
| Purification: | purified |

Target Details

| | |
|-------------------|--|
| Target: | BTN2A2 |
| Alternative Name: | BTN2A2 (BTN2A2 Products) |
| Background: | Description: Butyrophilin is the major protein associated with fat droplets in the milk. This gene is a member of the BTN2 subfamily of genes, which encode proteins belonging to the butyrophilin protein family. The gene is located in a cluster on chromosome 6, consisting of |

Target Details

seven genes belonging to the expanding B7/butyrophilin-like group, a subset of the immunoglobulin gene superfamily. The encoded protein is a type I receptor glycoprotein involved in lipid, fatty-acid and sterol metabolism. Several alternatively spliced transcript variants encoding different isoforms have been found for this gene.

Aliases: BTF2, BT2.2, BTN2.2

Molecular Weight: 59 kDa

Gene ID: 10385

HGNC: 10385

Pathways: [Activated T Cell Proliferation](#)

Application Details

Application Notes: ELISA: 1:10000, WB: 1:500 - 1:2000, ICC: 1:200 - 1:1000, FCM: 1:200 - 1:400, IHC: N/A

Restrictions: For Research Use only

Handling

Format: Liquid

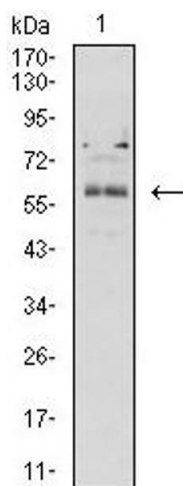
Buffer: Purified antibody in PBS with 0.05 % sodium azide

Preservative: Sodium azide

Precaution of Use: This product contains Sodium azide: a POISONOUS AND HAZARDOUS SUBSTANCE which should be handled by trained staff only.

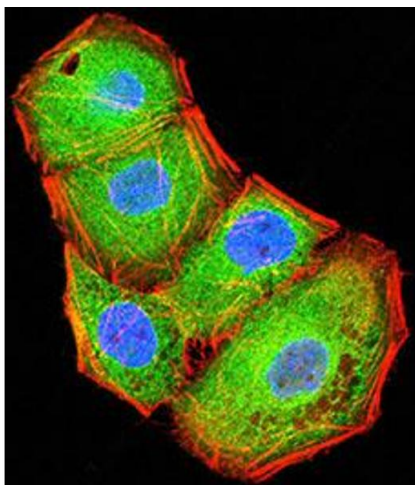
Storage: 4 °C/-20 °C

Storage Comment: 4°C, -20°C for long term storage



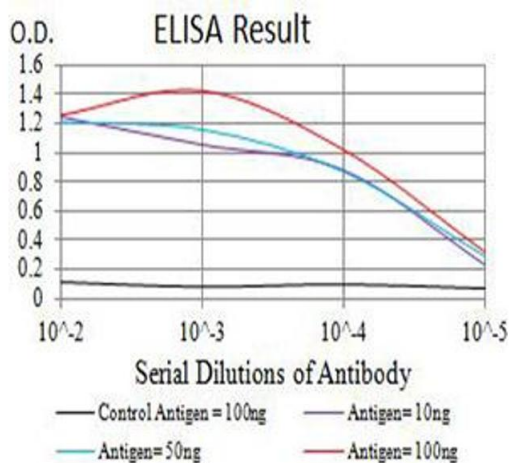
Western Blotting

Image 1. Western blot analysis using BTN2A2 mouse mAb against K562 (1) cell lysate.



Immunofluorescence

Image 2. Immunofluorescence analysis of HeLa cells using BTN2A2 mouse mAb (green). Blue: DRAQ5 fluorescent DNA dye. Red: Actin filaments have been labeled with Alexa Fluor-555 phalloidin. Secondary antibody from Fisher (Cat#: 35503)



ELISA

Image 3. Black line: Control Antigen (100 ng), Purple line: Antigen (10 ng), Blue line: Antigen (50 ng), Red line: Antigen (100 ng)

Please check the [product details page](#) for more images. Overall 6 images are available for ABIN5611321.