

Datasheet for ABIN5611328
anti-KIR3DL1 antibody (AA 22-340)[Go to Product page](#)

4 Images

Overview

Quantity:	0.1 mg
Target:	KIR3DL1
Binding Specificity:	AA 22-340
Reactivity:	Human, Rat, Monkey
Host:	Mouse
Clonality:	Monoclonal
Application:	Western Blotting (WB), ELISA, Immunohistochemistry (IHC), Flow Cytometry (FACS), Immunocytochemistry (ICC), Neutralization (Neut)

Product Details

Immunogen:	Purified recombinant fragment of human KIR3DL1 (AA: extra 22-340) expressed in Hek293 cells.
Clone:	6D9F6
Isotype:	IgG2b
Purification:	purified

Target Details

Target:	KIR3DL1
Alternative Name:	KIR3DL1 (KIR3DL1 Products)
Background:	Description: Killer cell immunoglobulin-like receptors (KIRs) are transmembrane glycoproteins expressed by natural killer cells and subsets of T cells. The KIR genes are polymorphic and

Target Details

highly homologous and they are found in a cluster on chromosome 19q13.4 within the 1 Mb leukocyte receptor complex (LRC). The gene content of the KIR gene cluster varies among haplotypes, although several "framework" genes are found in all haplotypes (KIR3DL3, KIR3DP1, KIR3DL4, KIR3DL2). The KIR proteins are classified by the number of extracellular immunoglobulin domains (2D or 3D) and by whether they have a long (L) or short (S) cytoplasmic domain. KIR proteins with the long cytoplasmic domain transduce inhibitory signals upon ligand binding via an immune tyrosine-based inhibitory motif (ITIM), while KIR proteins with the short cytoplasmic domain lack the ITIM motif and instead associate with the TYRO protein tyrosine kinase binding protein to transduce activating signals. The ligands for several KIR proteins are subsets of HLA class I molecules, thus, KIR proteins are thought to play an important role in regulation of the immune response.

Aliases: KIR, NKB1, NKAT3, NKB1B, NKAT-3, CD158E1, KIR3DL1/S1

Molecular Weight:	49 kDa
-------------------	--------

Gene ID:	3811
----------	------

HGNC:	3811
-------	------

Application Details

Application Notes:	ELISA: 1:10000, WB: 1:500 - 1:2000, ICC: N/A, FCM: N/A, IHC: 1:200 - 1:1000
--------------------	---

Restrictions:	For Research Use only
---------------	-----------------------

Handling

Format:	Liquid
---------	--------

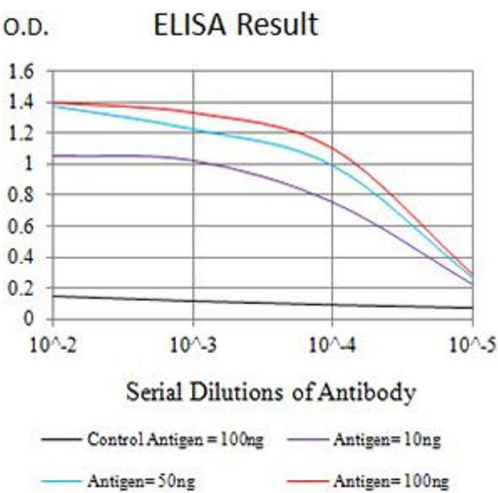
Buffer:	Purified antibody in PBS with 0.05 % sodium azide
---------	---

Preservative:	Sodium azide
---------------	--------------

Precaution of Use:	This product contains Sodium azide: a POISONOUS AND HAZARDOUS SUBSTANCE which should be handled by trained staff only.
--------------------	--

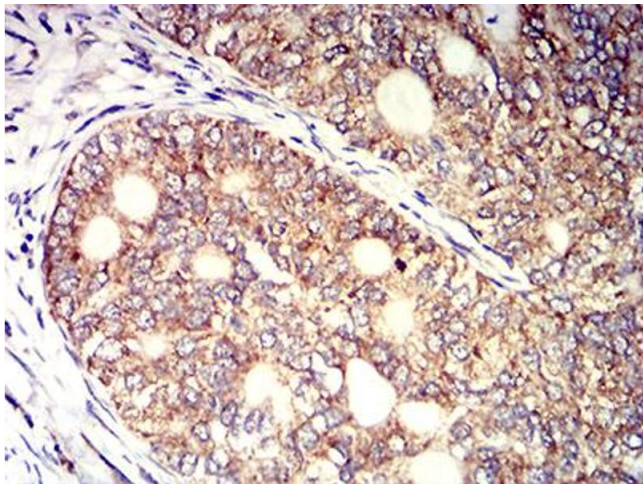
Storage:	4 °C/-20 °C
----------	-------------

Storage Comment:	4°C, -20°C for long term storage
------------------	----------------------------------



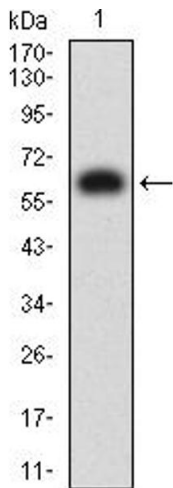
ELISA

Image 1. Black line: Control Antigen (100 ng),Purple line: Antigen (10 ng), Blue line: Antigen (50 ng), Red line:Antigen (100 ng)



Immunohistochemistry

Image 2. Immunohistochemical analysis of paraffin-embedded cervical cancer tissues using KIR3DL1 mouse mAb with DAB staining.



Western Blotting

Image 3. Western blot analysis using KIR3DL1 mAb against human KIR3DL1 (AA: extra 22-340) recombinant protein. (Expected MW is 65 kDa)

Please check the [product details page](#) for more images. Overall 4 images are available for ABIN5611328.