



[Go to Product page](#)

Datasheet for ABIN5611333
anti-ELANE antibody (AA 140-267)

6 Images

Overview

Quantity:	0.1 mg
Target:	ELANE
Binding Specificity:	AA 140-267
Reactivity:	Human, Monkey
Host:	Mouse
Clonality:	Monoclonal
Application:	ELISA, Western Blotting (WB), Immunohistochemistry (IHC), Immunocytochemistry (ICC), Flow Cytometry (FACS), Neutralization (Neut)

Product Details

Immunogen:	Purified recombinant fragment of human ELANE (AA: 140-267) expressed in E. coli.
Clone:	6B6B10
Isotype:	IgG1
Purification:	purified

Target Details

Target:	ELANE
Alternative Name:	ELANE (ELANE Products)
Background:	Description: Elastases form a subfamily of serine proteases that hydrolyze many proteins in addition to elastin. Humans have six elastase genes which encode structurally similar proteins. The encoded preproprotein is proteolytically processed to generate the active protease.

Target Details

Following activation, this protease hydrolyzes proteins within specialized neutrophil lysosomes, called azurophil granules, as well as proteins of the extracellular matrix. The enzyme may play a role in degenerative and inflammatory diseases through proteolysis of collagen-IV and elastin. This protein also degrades the outer membrane protein A (OmpA) of E. coli as well as the virulence factors of such bacteria as Shigella, Salmonella and Yersinia. Mutations in this gene are associated with cyclic neutropenia and severe congenital neutropenia (SCN). This gene is present in a gene cluster on chromosome 19.

Aliases: GE, NE, HLE, HNE, ELA2, SCN1, PMN-E

Molecular Weight:	28.5 kDa
-------------------	----------

Gene ID:	1991
----------	------

HGNC:	1991
-------	------

Application Details

Application Notes:	ELISA: 1:10000, WB: 1:500 - 1:2000, ICC: N/A, FCM: 1:200 - 1:400, IHC: 1:200 - 1:1000
--------------------	---

Restrictions:	For Research Use only
---------------	-----------------------

Handling

Format:	Liquid
---------	--------

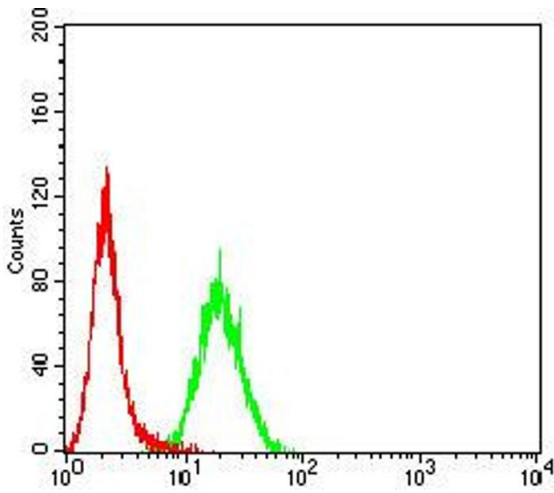
Buffer:	Purified antibody in PBS with 0.05 % sodium azide
---------	---

Preservative:	Sodium azide
---------------	--------------

Precaution of Use:	This product contains Sodium azide: a POISONOUS AND HAZARDOUS SUBSTANCE which should be handled by trained staff only.
--------------------	--

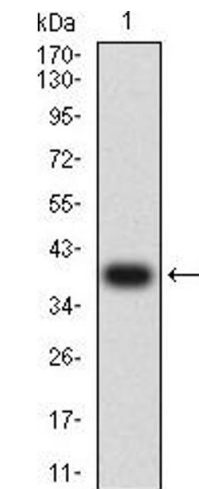
Storage:	4 °C/-20 °C
----------	-------------

Storage Comment:	4°C, -20°C for long term storage
------------------	----------------------------------



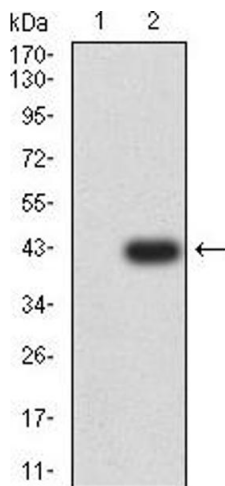
Flow Cytometry

Image 1. Flow cytometric analysis of HeLa cells using ELANE mouse mAb (green) and negative control (red).



Western Blotting

Image 2. Western blot analysis using ELANE mAb against human ELANE (AA: 140-267) recombinant protein. (Expected MW is 39 kDa)



Western Blotting

Image 3. Western blot analysis using ELANE mAb against HEK293 (1) and ELANE (AA: 140-267)-hlgGFc transfected HEK293 (2) cell lysate.

Please check the [product details page](#) for more images. Overall 6 images are available for ABIN5611333.