

Datasheet for ABIN5611337

**anti-P2RY14 antibody****6** Images[Go to Product page](#)

## Overview

Quantity:	0.1 mg
Target:	P2RY14
Reactivity:	Human
Host:	Mouse
Clonality:	Monoclonal
Application:	Western Blotting (WB), Immunohistochemistry (IHC), ELISA, Immunocytochemistry (ICC), Flow Cytometry (FACS), Neutralization (Neut)

## Product Details

Immunogen:	Purified recombinant fragment of human P2RY14 (AA: extra mix) expressed in E. coli.
Clone:	8A11B11
Isotype:	IgG2b
Purification:	purified

## Target Details

Target:	P2RY14
Alternative Name:	P2RY14 ( <a href="#">P2RY14 Products</a> )
Background:	Description: The product of this gene belongs to the family of G-protein coupled receptors, which contains several receptor subtypes with different pharmacological selectivity for various adenosine and uridine nucleotides. This receptor is a P2Y purinergic receptor for UDP-glucose and other UDP-sugars coupled to G-proteins. It has been implicated in extending the known

## Target Details

immune system functions of P2Y receptors by participating in the regulation of the stem cell compartment, and it may also play a role in neuroimmune function. Two transcript variants encoding the same protein have been identified for this gene.

Aliases: P2Y14, BPR105, GPR105

Molecular Weight: 39 kDa

Gene ID: 9934

HGNC: 9934

## Application Details

Application Notes: ELISA: 1:10000, WB: 1:500 - 1:2000, ICC: N/A, FCM: 1:200 - 1:400, IHC: 1:200 - 1:1000

Restrictions: For Research Use only

## Handling

Format: Liquid

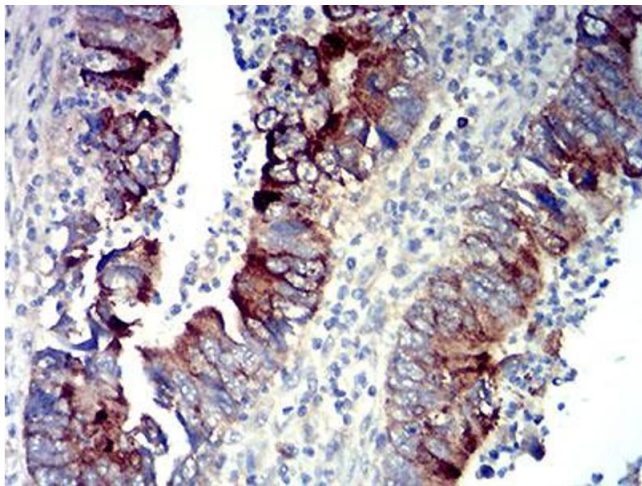
Buffer: Purified antibody in PBS with 0.05 % sodium azide

Preservative: Sodium azide

Precaution of Use: This product contains Sodium azide: a POISONOUS AND HAZARDOUS SUBSTANCE which should be handled by trained staff only.

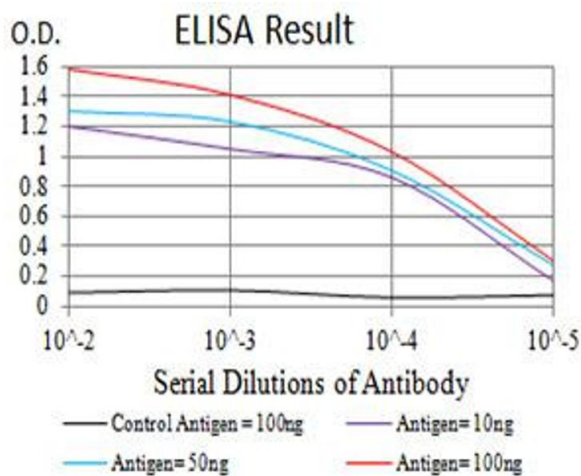
Storage: 4 °C/-20 °C

Storage Comment: 4°C, -20°C for long term storage



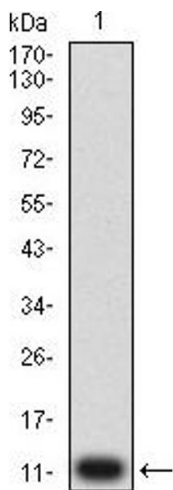
### Immunohistochemistry

**Image 1.** Immunohistochemical analysis of paraffin-embedded rectum cancer tissues using P2RY14 mouse mAb with DAB staining.



### ELISA

**Image 2.** Black line: Control Antigen (100 ng),Purple line: Antigen (10 ng), Blue line: Antigen (50 ng), Red line:Antigen (100 ng)



### Western Blotting

**Image 3.** Western blot analysis using P2RY14 mAb against human P2RY14 (AA: extra mix) recombinant protein. (Expected MW is 11.5 kDa)

Please check the [product details page](#) for more images. Overall 6 images are available for ABIN5611337.