

Datasheet for ABIN5611340
anti-GLRB antibody (AA 23-160)



[Go to Product page](#)

5 Images

Overview

Quantity:	100 µL
Target:	GLRB
Binding Specificity:	AA 23-160
Reactivity:	Human
Host:	Mouse
Clonality:	Monoclonal
Conjugate:	This GLRB antibody is un-conjugated
Application:	ELISA, Immunocytochemistry (ICC), Flow Cytometry (FACS)

Product Details

Purpose:	GLRB Antibody
Immunogen:	Purified recombinant fragment of human GLRB (AA: 23-160) expressed in E. Coli.
Clone:	3B8A8
Isotype:	IgG2b
Purification:	Purified antibody

Target Details

Target:	GLRB
Alternative Name:	GLRB (GLRB Products)
Background:	Description: This gene encodes the beta subunit of the glycine receptor, which is a pentamer

Target Details

composed of alpha and beta subunits. The receptor functions as a neurotransmitter-gated ion channel, which produces hyperpolarization via increased chloride conductance due to the binding of glycine to the receptor. Mutations in this gene cause startle disease, also known as hereditary hyperekplexia or congenital stiff-person syndrome, a disease characterized by muscular rigidity. Alternative splicing results in multiple transcript variants.

Aliases: HKPX2

Molecular Weight: 56.1kDa

Gene ID: 2743

HGNC: 2743

UniProt: [P48167](#)

Application Details

Application Notes: ELISA: 1/10000
FCM: 1/200 - 1/400
ICC: 1/200 - 1/1000

Restrictions: For Research Use only

Handling

Format: Liquid

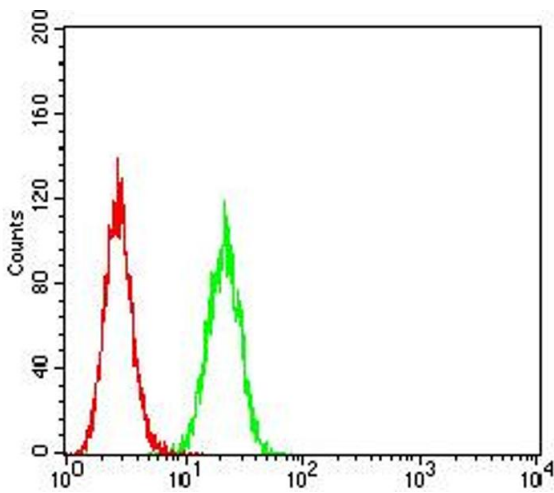
Buffer: Purified antibody in PBS with 0.05 % sodium azide.

Preservative: Sodium azide

Precaution of Use: This product contains Sodium azide: a POISONOUS AND HAZARDOUS SUBSTANCE which should be handled by trained staff only.

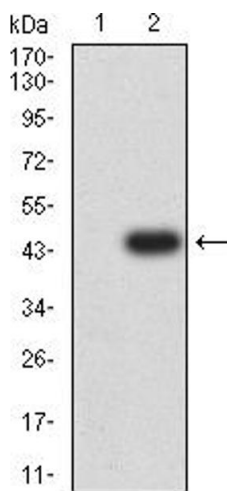
Storage: 4 °C,-20 °C

Storage Comment: Store at 4°C short term. Aliquot and store at -20°C long term. Avoid freeze/thaw cycles.



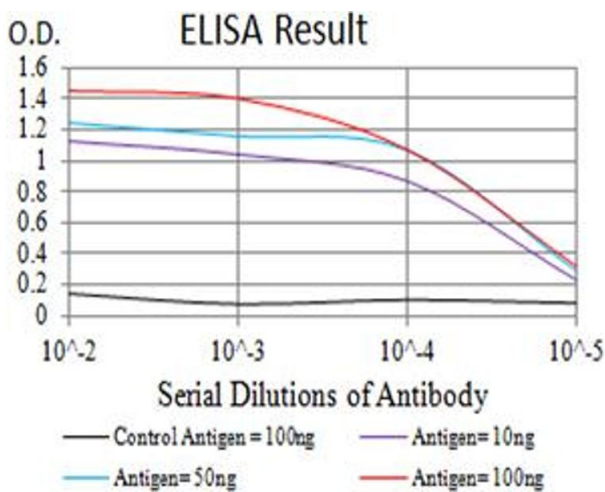
Flow Cytometry

Image 1. Flow cytometric analysis of Hela cells using GLRB mouse mAb (green) and negative control (red).



Western Blotting

Image 2. Western blot analysis using GLRB mAb against HEK293 (1) and GLRB (AA: extra 23-160)-hlgGFc transfected HEK293 (2) cell lysate.



ELISA

Image 3. Black line: Control Antigen (100 ng), Purple line: Antigen (10 ng), Blue line: Antigen (50 ng), Red line: Antigen (100 ng)

Please check the [product details page](#) for more images. Overall 5 images are available for ABIN5611340.