



[Go to Product page](#)

Datasheet for ABIN5611341
anti-IGLC2 antibody (AA 1-106)

5 Images

Overview

Quantity:	0.1 mg
Target:	IGLC2
Binding Specificity:	AA 1-106
Reactivity:	Human
Host:	Mouse
Clonality:	Monoclonal
Application:	Western Blotting (WB), ELISA, Immunohistochemistry (IHC), Neutralization (Neut), Flow Cytometry (FACS), Immunocytochemistry (ICC)

Product Details

Immunogen:	Purified recombinant fragment of human IGLC2 (AA: 1-106) expressed in E. coli.
Clone:	5E12B9
Isotype:	IgG1
Purification:	purified

Target Details

Target:	IGLC2
Alternative Name:	IGLC2 (IGLC2 Products)
Background:	Description: IGLC2 (Immunoglobulin Lambda Constant 2) is a Protein Coding gene. Among its related pathways are Interleukin-3, 5 and GM-CSF signaling and Vesicle-mediated transport. GO annotations related to this gene include antigen binding. An important paralog of this gene is

Target Details

	IGLC3. Aliases: IGLC
Molecular Weight:	11.3 kDa
Gene ID:	3538
HGNC:	3538

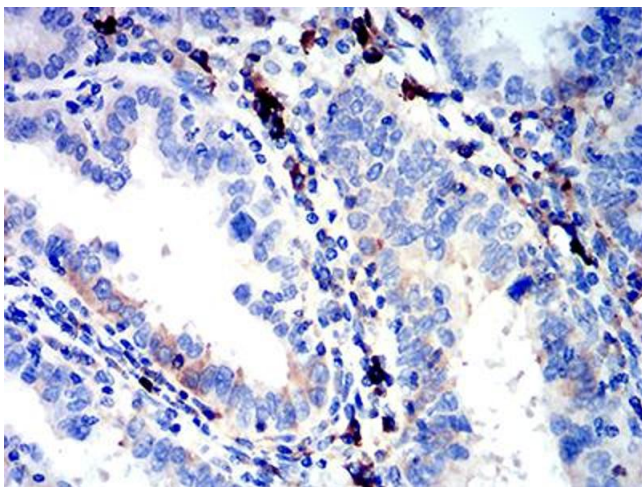
Application Details

Application Notes:	ELISA: 1:10000, WB: 1:500 - 1:2000, ICC: N/A, FCM: N/A, IHC: 1:200 - 1:1000
Restrictions:	For Research Use only

Handling

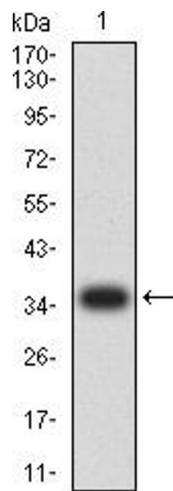
Format:	Liquid
Buffer:	Purified antibody in PBS with 0.05 % sodium azide
Preservative:	Sodium azide
Precaution of Use:	This product contains Sodium azide: a POISONOUS AND HAZARDOUS SUBSTANCE which should be handled by trained staff only.
Storage:	4 °C/-20 °C
Storage Comment:	4°C, -20°C for long term storage

Images



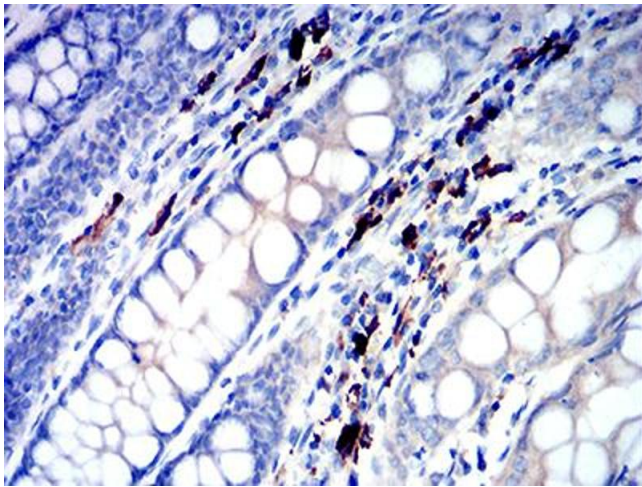
Immunohistochemistry

Image 1. Immunohistochemical analysis of paraffin-embedded endometrial cancer tissues using IGLC2 mouse mAb with DAB staining.



Western Blotting

Image 2. Western blot analysis using IGLC2 mAb against human IGLC2 (AA: 1-106) recombinant protein. (Expected MW is 36.8 kDa)



Immunohistochemistry

Image 3. Immunohistochemical analysis of paraffin-embedded colon tissues using IGLC2 mouse mAb with DAB staining.

Please check the [product details page](#) for more images. Overall 5 images are available for ABIN5611341.