



[Go to Product page](#)

Datasheet for ABIN5611345  
**anti-PSMA antibody (AA 44-177)**

5 Images

### Overview

Quantity:	0.1 mg
Target:	PSMA (FOLH1)
Binding Specificity:	AA 44-177
Reactivity:	Human
Host:	Mouse
Clonality:	Monoclonal
Application:	Western Blotting (WB), Immunohistochemistry (IHC), ELISA, Flow Cytometry (FACS), Immunocytochemistry (ICC), Neutralization (Neut)

### Product Details

Immunogen:	Purified recombinant fragment of human PSMA (AA: extra 44-177) expressed in E. coli.
Clone:	2D10E10
Isotype:	IgG1
Purification:	purified

### Target Details

Target:	PSMA (FOLH1)
Alternative Name:	PSMA ( <a href="#">FOLH1 Products</a> )
Background:	Description: This gene encodes a type II transmembrane glycoprotein belonging to the M28 peptidase family. The protein acts as a glutamate carboxypeptidase on different alternative substrates, including the nutrient folate and the neuropeptide N-acetyl-l-aspartyl-l-glutamate

## Target Details

---

and is expressed in a number of tissues such as prostate, central and peripheral nervous system and kidney. A mutation in this gene may be associated with impaired intestinal absorption of dietary folates, resulting in low blood folate levels and consequent hyperhomocysteinemia. Expression of this protein in the brain may be involved in a number of pathological conditions associated with glutamate excitotoxicity. In the prostate the protein is up-regulated in cancerous cells and is used as an effective diagnostic and prognostic indicator of prostate cancer. This gene likely arose from a duplication event of a nearby chromosomal region. Alternative splicing gives rise to multiple transcript variants encoding several different isoforms.

Aliases: FOLH1, PSM, FGCP, FOLH, GCP2, mGCP, GCPII, NAALAD1, NAALAdase

---

Molecular Weight:	84.3 kDa
-------------------	----------

---

Gene ID:	2346
----------	------

---

HGNC:	2346
-------	------

## Application Details

---

Application Notes:	ELISA: 1:10000, WB: 1:500 - 1:2000, ICC: N/A, FCM: 1:200 - 1:400, IHC: N/A
--------------------	--

---

Restrictions:	For Research Use only
---------------	-----------------------

## Handling

---

Format:	Liquid
---------	--------

---

Buffer:	Purified antibody in PBS with 0.05 % sodium azide
---------	---

---

Preservative:	Sodium azide
---------------	--------------

---

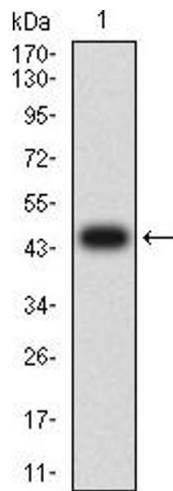
Precaution of Use:	This product contains Sodium azide: a POISONOUS AND HAZARDOUS SUBSTANCE which should be handled by trained staff only.
--------------------	--

---

Storage:	4 °C/-20 °C
----------	-------------

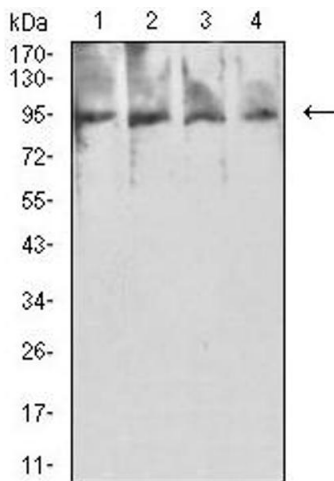
---

Storage Comment:	4°C, -20°C for long term storage
------------------	----------------------------------



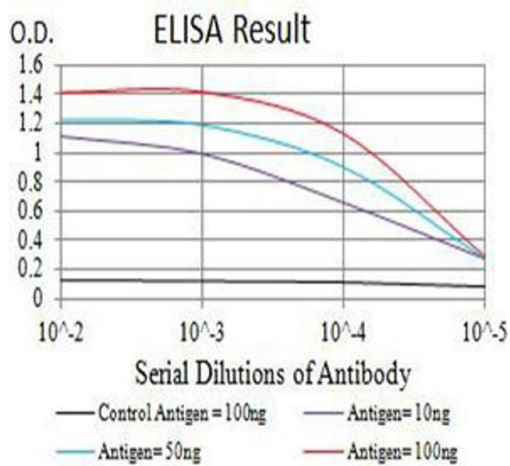
### Western Blotting

**Image 1.** Western blot analysis using PSMA mAb against human PSMA (AA: extra 44-177) recombinant protein. (Expected MW is 47 kDa)



### Western Blotting

**Image 2.** Western blot analysis using PSMA mouse mAb against HeLa (1), MCF-7 (2), HCT116 (3), and GC-7901 (4) cell lysate.



### ELISA

**Image 3.** Black line: Control Antigen (100 ng), Purple line: Antigen (10 ng), Blue line: Antigen (50 ng), Red line: Antigen (100 ng)

Please check the [product details page](#) for more images. Overall 5 images are available for ABIN5611345.