

Datasheet for ABIN5611346

anti-P2RY12 antibody

5 Images

[Go to Product page](#)

Overview

Quantity:	0.1 mg
Target:	P2RY12
Reactivity:	Human
Host:	Mouse
Clonality:	Monoclonal
Application:	Western Blotting (WB), ELISA, Immunohistochemistry (IHC), Immunocytochemistry (ICC), Flow Cytometry (FACS), Neutralization (Neut)

Product Details

Immunogen:	Purified recombinant fragment of human P2RY12 (AA: extra mix) expressed in E. coli.
Clone:	1C2A9
Isotype:	IgG1
Purification:	purified

Target Details

Target:	P2RY12
Alternative Name:	P2RY12 (P2RY12 Products)
Background:	Description: The product of this gene belongs to the family of G-protein coupled receptors. This family has several receptor subtypes with different pharmacological selectivity, which overlaps in some cases, for various adenosine and uridine nucleotides. This receptor is involved in platelet aggregation, and is a potential target for the treatment of thromboembolisms and other

Target Details

clotting disorders. Mutations in this gene are implicated in bleeding disorder, platelet type 8 (BDPLT8). Alternative splicing results in multiple transcript variants of this gene.

Aliases: HORK3, P2Y12, ADPG-R, BDPLT8, SP1999, P2T(AC), P2Y(AC), P2Y(12)R, P2Y(ADP), P2Y(cyc)

Molecular Weight: 39.4 kDa

Gene ID: 64805

HGNC: 64805

Application Details

Application Notes: ELISA: 1:10000, WB: 1:500 - 1:2000, ICC: N/A, FCM: 1:200 - 1:400, IHC: N/A

Restrictions: For Research Use only

Handling

Format: Liquid

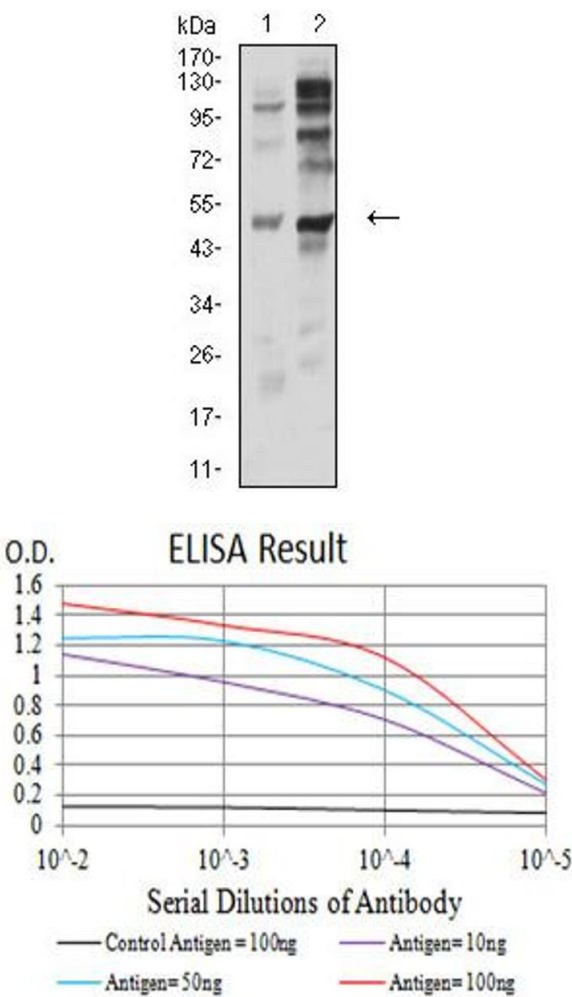
Buffer: Purified antibody in PBS with 0.05 % sodium azide

Preservative: Sodium azide

Precaution of Use: This product contains Sodium azide: a POISONOUS AND HAZARDOUS SUBSTANCE which should be handled by trained staff only.

Storage: 4 °C/-20 °C

Storage Comment: 4°C, -20°C for long term storage

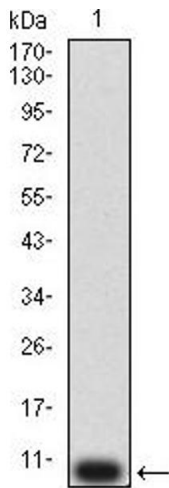


Western Blotting

Image 1. Western blot analysis using P2RY12 mouse mAb against PC-3 (1) and C6 (2) cell lysate.

ELISA

Image 2. Black line: Control Antigen (100 ng),Purple line: Antigen (10 ng), Blue line: Antigen (50 ng), Red line:Antigen (100 ng)



Western Blotting

Image 3. Western blot analysis using P2RY12 mAb against human P2RY12 (AA: extra mix) recombinant protein. (Expected MW is 9.4 kDa)

Please check the [product details page](#) for more images. Overall 5 images are available for ABIN5611346.