

Datasheet for ABIN5611348

**anti-P2RY8 antibody**

7 Images

[Go to Product page](#)

## Overview

Quantity:	0.1 mg
Target:	P2RY8
Reactivity:	Human
Host:	Mouse
Clonality:	Monoclonal
Application:	Western Blotting (WB), ELISA, Flow Cytometry (FACS), Immunohistochemistry (IHC), Immunocytochemistry (ICC)

## Product Details

Immunogen:	Purified recombinant fragment of human P2RY8 (AA: extra mix) expressed in E. coli.
Clone:	1G5A11
Isotype:	IgG2a
Purification:	purified

## Target Details

Target:	P2RY8
Alternative Name:	P2RY8 ( <a href="#">P2RY8 Products</a> )
Background:	Description: The protein encoded by this gene belongs to the family of G-protein coupled receptors, that are preferentially activated by adenosine and uridine nucleotides. This gene is moderately expressed in undifferentiated HL60 cells, and is located on both chromosomes X and Y.

## Target Details

	Aliases: P2Y8
Molecular Weight:	40.6 kDa
Gene ID:	286530
HGNC:	286530

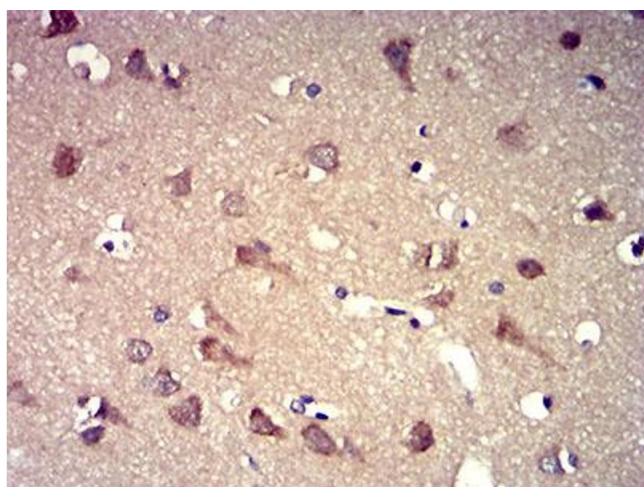
## Application Details

Application Notes:	ELISA: 1:10000, WB: 1:500 - 1:2000, ICC: 1:100 - 1:500, FCM: 1:200 - 1:400, IHC: 1:200 - 1:1000
Restrictions:	For Research Use only

## Handling

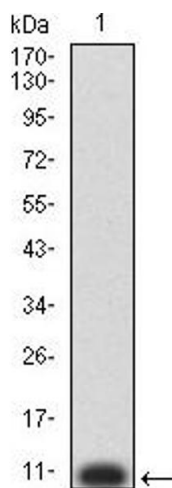
Format:	Liquid
Buffer:	Purified antibody in PBS with 0.05 % sodium azide
Preservative:	Sodium azide
Precaution of Use:	This product contains Sodium azide: a POISONOUS AND HAZARDOUS SUBSTANCE which should be handled by trained staff only.
Storage:	4 °C/-20 °C
Storage Comment:	4°C, -20°C for long term storage

## Images



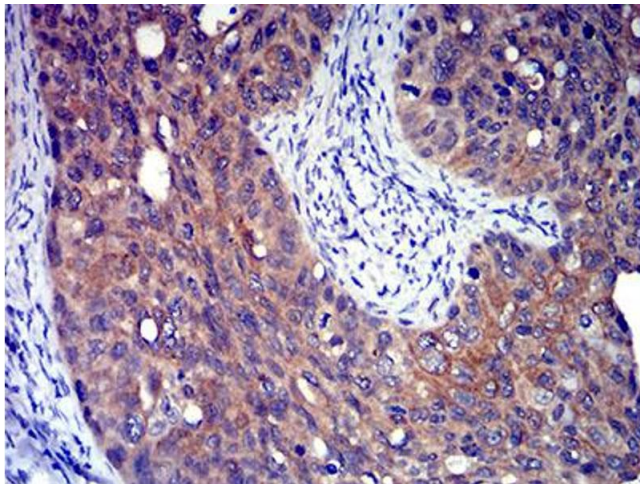
### Immunohistochemistry

**Image 1.** Immunohistochemical analysis of paraffin-embedded brain tissues using P2RY8 mouse mAb with DAB staining.



### Western Blotting

**Image 2.** Western blot analysis using P2RY8 mAb against human P2RY8 (AA: extra mix) recombinant protein. (Expected MW is 6.6 kDa)



### Immunohistochemistry

**Image 3.** Immunohistochemical analysis of paraffin-embedded cervical cancer tissues using P2RY8 mouse mAb with DAB staining.

Please check the [product details page](#) for more images. Overall 7 images are available for ABIN5611348.