



[Go to Product page](#)

Datasheet for ABIN5611355
anti-CHRNA5 antibody (AA 23-254)

5 Images

Overview

Quantity:	0.1 mg
Target:	CHRNA5
Binding Specificity:	AA 23-254
Reactivity:	Human, Rat
Host:	Mouse
Clonality:	Monoclonal
Application:	Western Blotting (WB), ELISA, Immunohistochemistry (IHC), Immunocytochemistry (ICC), Flow Cytometry (FACS), Neutralization (Neut)

Product Details

Immunogen:	Purified recombinant fragment of human CHRNA5 (AA: extra 23-254) expressed in E. coli.
Clone:	2D2D10
Isotype:	IgG1
Purification:	purified

Target Details

Target:	CHRNA5
Alternative Name:	CHRNA5 (CHRNA5 Products)
Background:	Description: The protein encoded by this gene is a nicotinic acetylcholine receptor subunit and a member of a superfamily of ligand-gated ion channels that mediate fast signal transmission at synapses. These receptors are thought to be heteropentamers composed of separate but

Target Details

similar subunits. Defects in this gene have been linked to susceptibility to lung cancer type 2 (LNCR2).

Aliases: LNCR2

Molecular Weight: 53 kDa

Gene ID: 1138

HGNC: 1138

Application Details

Application Notes: ELISA: 1:10000, WB: 1:500 - 1:2000, ICC: N/A, FCM: 1:200 - 1:400, IHC: N/A

Restrictions: For Research Use only

Handling

Format: Liquid

Buffer: Purified antibody in PBS with 0.05 % sodium azide

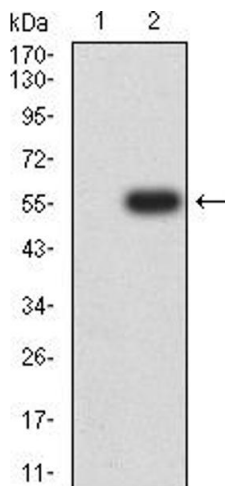
Preservative: Sodium azide

Precaution of Use: This product contains Sodium azide: a POISONOUS AND HAZARDOUS SUBSTANCE which should be handled by trained staff only.

Storage: 4 °C/-20 °C

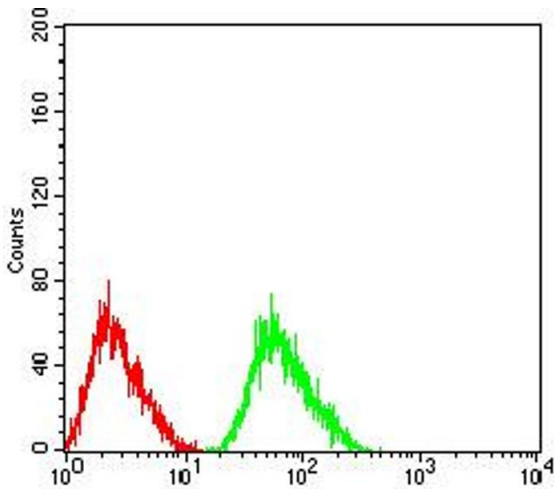
Storage Comment: 4°C, -20°C for long term storage

Images



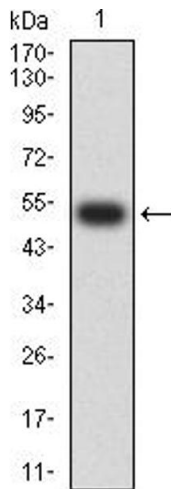
Western Blotting

Image 1. Western blot analysis using CHRNA5 mAb against HEK293 (1) and CHRNA5 (AA: 23-254)-hlgGfc transfected HEK293 (2) cell lysate.



Flow Cytometry

Image 2. Flow cytometric analysis of SK-N-SH cells using CHRNA5 mouse mAb (green) and negative control (red).



Western Blotting

Image 3. Western blot analysis using CHRNA5 mAb against human CHRNA5 (AA: 23-254) recombinant protein. (Expected MW is 52.5 kDa)

Please check the [product details page](#) for more images. Overall 5 images are available for ABIN5611355.