



[Go to Product page](#)

Datasheet for ABIN5611361  
**anti-CHRND antibody (AA 22-245)**

5 Images

Overview

Quantity:	0.1 mg
Target:	CHRND
Binding Specificity:	AA 22-245
Reactivity:	Human
Host:	Mouse
Clonality:	Monoclonal
Application:	Western Blotting (WB), ELISA, Flow Cytometry (FACS), Immunohistochemistry (IHC), Immunocytochemistry (ICC), Neutralization (Neut)

Product Details

Immunogen:	Purified recombinant fragment of human CHRND (AA: extra 22-245) expressed in E. coli.
Clone:	1H1F9
Isotype:	IgG1
Purification:	purified

Target Details

Target:	CHRND
Alternative Name:	CHRND ( <a href="#">CHRND Products</a> )
Background:	Description: The acetylcholine receptor of muscle has 5 subunits of 4 different types: 2 alpha and 1 each of beta, gamma and delta subunits. After acetylcholine binding, the receptor undergoes an extensive conformation change that affects all subunits and leads to opening of

## Target Details

---

an ion-conducting channel across the plasma membrane. Defects in this gene are a cause of multiple pterygium syndrome lethal type (MUPSL), congenital myasthenic syndrome slow-channel type (SCCMS), and congenital myasthenic syndrome fast-channel type (FCCMS). Several transcript variants encoding different isoforms have been found for this gene.

Aliases: ACHRD, CMS2A, CMS3A, CMS3B, CMS3C, FCCMS, SCCMS

---

Molecular Weight:	58.8 kDa
-------------------	----------

---

Gene ID:	1144
----------	------

---

HGNC:	1144
-------	------

## Application Details

---

---

Application Notes:	ELISA: 1:10000, WB: 1:500 - 1:2000, ICC: N/A, FCM: 1:200 - 1:400, IHC: N/A
--------------------	--

---

Restrictions:	For Research Use only
---------------	-----------------------

## Handling

---

---

Format:	Liquid
---------	--------

---

Buffer:	Purified antibody in PBS with 0.05 % sodium azide
---------	---

---

Preservative:	Sodium azide
---------------	--------------

---

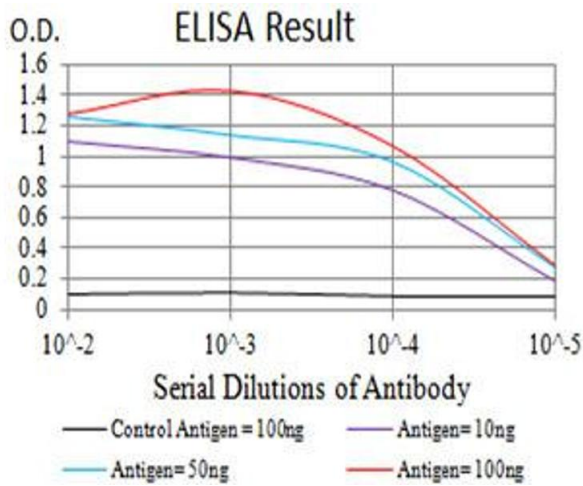
Precaution of Use:	This product contains Sodium azide: a POISONOUS AND HAZARDOUS SUBSTANCE which should be handled by trained staff only.
--------------------	--

---

Storage:	4 °C/-20 °C
----------	-------------

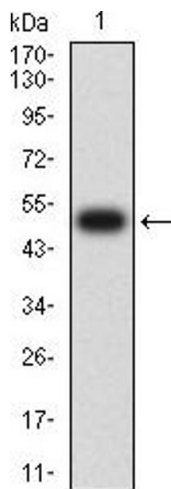
---

Storage Comment:	4°C, -20°C for long term storage
------------------	----------------------------------



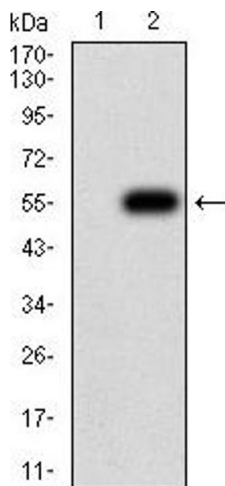
### ELISA

**Image 1.** Black line: Control Antigen (100 ng), Purple line: Antigen (10 ng), Blue line: Antigen (50 ng), Red line: Antigen (100 ng)



### Western Blotting

**Image 2.** Western blot analysis using CHRND mAb against human CHRND (AA: extra 22-245) recombinant protein. (Expected MW is 52.2 kDa)



### Western Blotting

**Image 3.** Western blot analysis using CHRND mAb against HEK293 (1) and CHRND (AA: extra 22-245)-hlgGfc transfected HEK293 (2) cell lysate.

Please check the [product details page](#) for more images. Overall 5 images are available for ABIN5611361.