

Datasheet for ABIN5611364  
**anti-ALDH1A1 antibody (AA 1-110)**[Go to Product page](#)

## 7 Images

## Overview

Quantity:	0.1 mg
Target:	ALDH1A1
Binding Specificity:	AA 1-110
Reactivity:	Human
Host:	Mouse
Clonality:	Monoclonal
Application:	Western Blotting (WB), Immunohistochemistry (IHC), ELISA, Flow Cytometry (FACS), Immunocytochemistry (ICC), Neutralization (Neut)

## Product Details

Immunogen:	Purified recombinant fragment of human ALDH1A1 (AA: 1-110) expressed in E. coli.
Clone:	2B2G1
Isotype:	IgG1
Purification:	purified

## Target Details

Target:	ALDH1A1
Alternative Name:	ALDH1A1 ( <a href="#">ALDH1A1 Products</a> )
Background:	Description: The protein encoded by this gene belongs to the aldehyde dehydrogenase family. Aldehyde dehydrogenase is the next enzyme after alcohol dehydrogenase in the major pathway of alcohol metabolism. There are two major aldehyde dehydrogenase isozymes in the liver,

## Target Details

cytosolic and mitochondrial, which are encoded by distinct genes, and can be distinguished by their electrophoretic mobility, kinetic properties, and subcellular localization. This gene encodes the cytosolic isozyme. Studies in mice show that through its role in retinol metabolism, this gene may also be involved in the regulation of the metabolic responses to high-fat diet.

Aliases: ALDC, ALDH1, HEL-9, HEL12, PUMB1, ALDH11, RALDH1, ALDH-E1, HEL-S-53e

Molecular Weight: 54.9 kDa

Gene ID: 216

HGNC: 216

Pathways: [Dopaminergic Neurogenesis](#)

## Application Details

Application Notes: ELISA: 1:10000, WB: 1:500 - 1:2000, ICC: N/A, FCM: 1:200 - 1:400, IHC: 1:200 - 1:1000

Restrictions: For Research Use only

## Handling

Format: Liquid

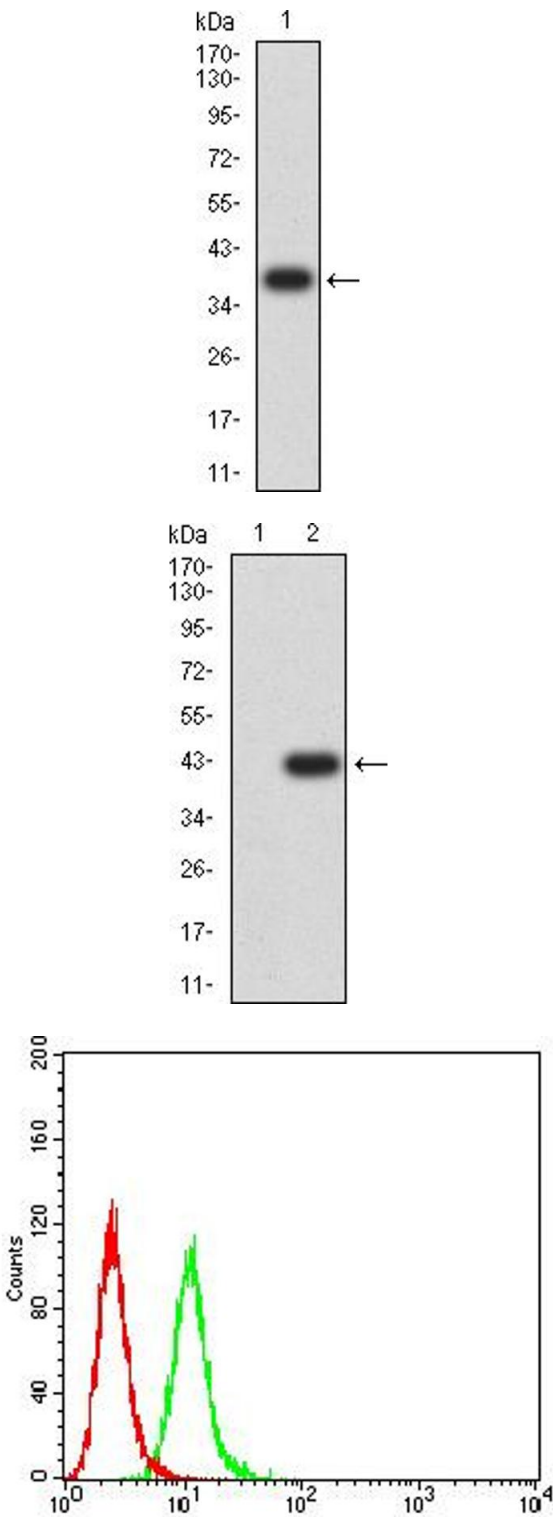
Buffer: Purified antibody in PBS with 0.05 % sodium azide

Preservative: Sodium azide

Precaution of Use: This product contains Sodium azide: a POISONOUS AND HAZARDOUS SUBSTANCE which should be handled by trained staff only.

Storage: 4 °C/-20 °C

Storage Comment: 4°C, -20°C for long term storage



Western Blotting

**Image 1.** Western blot analysis using ALDH1A1 mAb against human ALDH1A1 (AA: 1-110) recombinant protein. (Expected MW is 38.4 kDa)

Western Blotting

**Image 2.** Western blot analysis using ALDH1A1 mAb against HEK293 (1) and ALDH1A1 (AA: 1-110)-hlgGFc transfected HEK293 (2) cell lysate.

Flow Cytometry

**Image 3.** Flow cytometric analysis of HeLa cells using ALDH1A1 mouse mAb (green) and negative control (red).

Please check the [product details page](#) for more images. Overall 7 images are available for ABIN5611364.