

Datasheet for ABIN561140

## anti-Metabotropic Glutamate Receptor 1 antibody (AA 387-486)



[Go to Product page](#)

### 1 Image

#### Overview

Quantity:	50 µL
Target:	Metabotropic Glutamate Receptor 1 (GRM1)
Binding Specificity:	AA 387-486
Reactivity:	Human
Host:	Mouse
Clonality:	Polyclonal
Conjugate:	This Metabotropic Glutamate Receptor 1 antibody is un-conjugated
Application:	Western Blotting (WB), ELISA

#### Product Details

Purpose:	Mouse polyclonal antibody raised against a partial recombinant GRM1.
Immunogen:	GRM1 (NP_000829, 387 a.a. ~ 486 a.a) partial recombinant protein with GST tag.
Sequence:	NPNFKRICTG NESLEENYVQ DSKMGFVINA IYAMAHGLQN MHHALCPGHV GLCDAMKPID GSKLLDFLIK SSFIGVSGEE VWFDEKGDAP GRYDIMNLQY
Cross-Reactivity:	Human
Characteristics:	Antibody Reactive Against Recombinant Protein.

#### Target Details

Target:	Metabotropic Glutamate Receptor 1 (GRM1)
Alternative Name:	GRM1 ( <a href="#">GRM1 Products</a> )

## Target Details

Background:	Full Gene Name: glutamate receptor, metabotropic 1 Synonyms: GPRC1A,GRM1A,MGLUR1,MGLUR1A,mGlu1
Gene ID:	2911
NCBI Accession:	<a href="#">NM_000838</a>

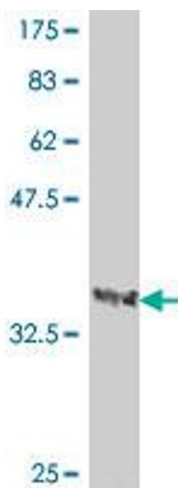
## Application Details

Application Notes:	Optimal working dilution should be determined by the investigator.
Restrictions:	For Research Use only

## Handling

Format:	Liquid
Buffer:	50 % glycerol
Handling Advice:	Aliquot to avoid repeated freezing and thawing.
Storage:	-20 °C
Storage Comment:	Store at -20°C or lower. Aliquot to avoid repeated freezing and thawing.

## Images



### Western Blotting

**Image 1.** Western Blot detection against Immunogen (37.11 KDa) .