

Datasheet for ABIN561157

anti-Glutathione Synthetase antibody

2 Images



[Go to Product page](#)

Overview

Quantity:	100 µg
Target:	Glutathione Synthetase (GSS)
Reactivity:	Human
Host:	Mouse
Clonality:	Monoclonal
Conjugate:	This Glutathione Synthetase antibody is un-conjugated
Application:	Western Blotting (WB), ELISA

Product Details

Purpose:	Mouse monoclonal antibody raised against a full length recombinant GSS.
Immunogen:	GSS recombinant protein.
Sequence:	MATNWGSELLQ DKQQLLELAR QAVDRALAEG VLLRTSQEPT SSEVVSYPF TLFPSLVPSA LLEQAYAVQM DFNLLVDAVS QNAAFLEQTL SSTIKQDDFT ARLFDIHKQV LKEGIAQTVF LGLNRSYMF QRSADGSPAL KQIEINTISA SFGGLASRTP AVHRHVLSVL SKTKEAGKIL SNNPSKGLAL GIAKAWELYG SPNALVLLIA QEKERNIFDQ RAIENELLAR NIHVIRRTFE DISEKGSLDQ DRRLF
Clone:	5G4-2E9
Isotype:	IgG2a
Cross-Reactivity:	Human
Characteristics:	Antibody Reactive Against Recombinant Protein.

Target Details

Target:	Glutathione Synthetase (GSS)
Alternative Name:	GSS (GSS Products)
Background:	Full Gene Name: glutathione synthetase Synonyms: GSHS,MGC14098
Gene ID:	2937
Pathways:	Warburg Effect

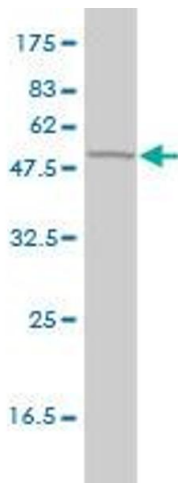
Application Details

Application Notes:	Optimal working dilution should be determined by the investigator.
Restrictions:	For Research Use only

Handling

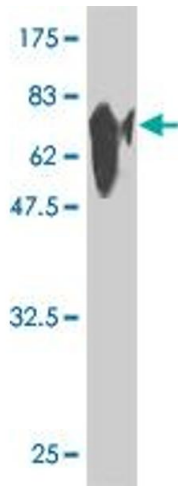
Buffer:	In 1x PBS, pH 7.4
Handling Advice:	Aliquot to avoid repeated freezing and thawing.
Storage:	-20 °C
Storage Comment:	Store at -20°C or lower. Aliquot to avoid repeated freezing and thawing.

Images



Western Blotting

Image 1. GSS monoclonal antibody (M01), clone 5G4-2E9.
Western Blot analysis of GSS expression in human colon.



Western Blotting

Image 2. Western Blot detection against Immunogen (80 kDa).