



[Go to Product page](#)

Datasheet for ABIN561209

anti-GUCY2D antibody (AA 521-630)

1 Image

Overview

Quantity:	50 µL
Target:	GUCY2D
Binding Specificity:	AA 521-630
Reactivity:	Human
Host:	Mouse
Clonality:	Polyclonal
Conjugate:	This GUCY2D antibody is un-conjugated
Application:	Western Blotting (WB), ELISA

Product Details

Purpose:	Mouse polyclonal antibody raised against a partial recombinant GUCY2D.
Immunogen:	GUCY2D (NP_000171, 521 a.a. ~ 630 a.a) partial recombinant protein with GST tag.
Sequence:	RKVAQGSRSS LGARMSDIR SGPSQHLDSP NIGVYEGDRV WLKKFPGDQH IAIRPATKTA FSKLQELRHE NVALYLGLFL ARGAECPAAL WEGNLAVVSE HCTRGLQLDL
Cross-Reactivity:	Human
Characteristics:	Antibody Reactive Against Recombinant Protein.

Target Details

Target:	GUCY2D
Alternative Name:	GUCY2D (GUCY2D Products)

Target Details

Background:	Full Gene Name: guanylate cyclase 2D, membrane (retina-specific) Synonyms: CORD5,CORD6,CYGD,GUC1A4,GUC2D,LCA,LCA1,RETGC-1,ROS-GC1,retGC
Gene ID:	3000
NCBI Accession:	NM_000180
Pathways:	Regulation of G-Protein Coupled Receptor Protein Signaling, Phototransduction

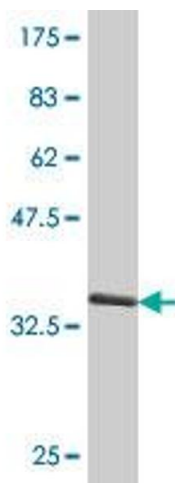
Application Details

Application Notes:	Optimal working dilution should be determined by the investigator.
Restrictions:	For Research Use only

Handling

Format:	Liquid
Buffer:	50 % glycerol
Handling Advice:	Aliquot to avoid repeated freezing and thawing.
Storage:	-20 °C
Storage Comment:	Store at -20°C or lower. Aliquot to avoid repeated freezing and thawing.

Images



Western Blotting

Image 1. Western Blot detection against Immunogen (38.1 kDa).