



[Go to Product page](#)

Datasheet for ABIN561210
anti-GUCY2D antibody (AA 521-630)

3 Images

Overview

Quantity:	100 µg
Target:	GUCY2D
Binding Specificity:	AA 521-630
Reactivity:	Human
Host:	Mouse
Clonality:	Monoclonal
Conjugate:	This GUCY2D antibody is un-conjugated
Application:	Western Blotting (WB), ELISA

Product Details

Purpose:	Mouse monoclonal antibody raised against a partial recombinant GUCY2D.
Immunogen:	GUCY2D (NP_000171, 521 a.a. ~ 630 a.a) partial recombinant protein with GST tag. MW of the GST tag alone is 26 KDa.
Sequence:	RKVAQGSRSS LGARMSDIR SGPSQHLDSP NIGVYEGDRV WLKKFPGDQH IAIRPATKTA FSKLQELRHE NVALYLGLFL ARGAECPAAL WEGNLAVVSE HCTRGLQDL
Clone:	4E12
Isotype:	IgG1
Cross-Reactivity:	Human
Characteristics:	Antibody Reactive Against Recombinant Protein.

Target Details

Target:	GUCY2D
Alternative Name:	GUCY2D (GUCY2D Products)
Background:	Full Gene Name: guanylate cyclase 2D, membrane (retina-specific) Synonyms: CORD5,CORD6,CYGD,GUC1A4,GUC2D,LCA,LCA1,RETGC-1,ROS-GC1,retGC
Gene ID:	3000
NCBI Accession:	NM_000180
Pathways:	Regulation of G-Protein Coupled Receptor Protein Signaling, Phototransduction

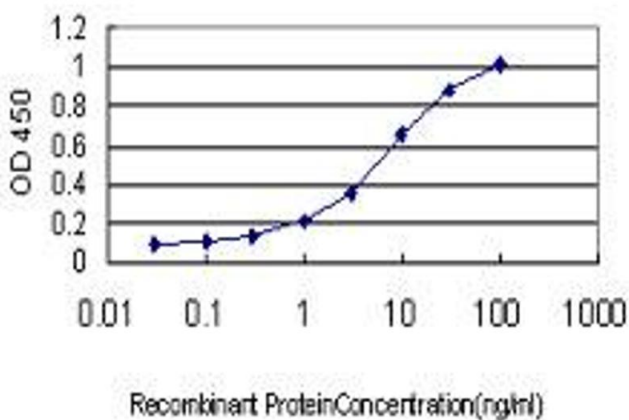
Application Details

Application Notes:	Optimal working dilution should be determined by the investigator.
Restrictions:	For Research Use only

Handling

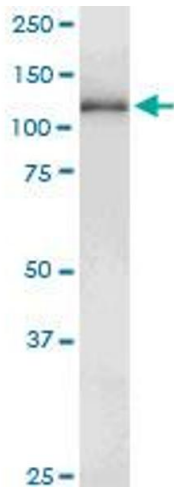
Buffer:	In 1x PBS, pH 7.4
Handling Advice:	Aliquot to avoid repeated freezing and thawing.
Storage:	-20 °C
Storage Comment:	Store at -20°C or lower. Aliquot to avoid repeated freezing and thawing.

Images



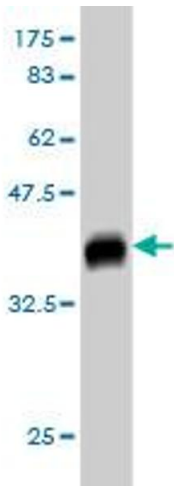
ELISA

Image 1. Detection limit for recombinant GST tagged GUCY2D is approximately 0.1ng/ml as a capture antibody.



Western Blotting

Image 2. GUCY2D monoclonal antibody (M01), clone 4E12. Western Blot analysis of GUCY2D expression in human spleen.



Western Blotting

Image 3. Western Blot detection against Immunogen (37.73 kDa).