

Datasheet for ABIN561237
anti-HCK antibody (AA 1-80)[Go to Product page](#)

3 Images

1 Publication

Overview

Quantity:	100 µg
Target:	HCK
Binding Specificity:	AA 1-80
Reactivity:	Human
Host:	Mouse
Clonality:	Monoclonal
Conjugate:	This HCK antibody is un-conjugated
Application:	Western Blotting (WB), ELISA, Proximity Ligation Assay (PLA)

Product Details

Purpose:	Mouse monoclonal antibody raised against a partial recombinant HCK.
Immunogen:	HCK (AAH14435, 1 a.a. ~ 80 a.a) partial recombinant protein with GST tag. MW of the GST tag alone is 26 KDa.
Sequence:	MGCMKSKFLQ VGGNTFSKTE TSASPHCPVY VPDPTSTIKP GPNSHNSNTP GIREAGSEDI IVVALYDYEA IHEDLSFQK
Clone:	2A6
Isotype:	IgG2a
Cross-Reactivity:	Human
Characteristics:	Antibody Reactive Against Recombinant Protein.

Target Details

Target:	HCK
Alternative Name:	HCK (HCK Products)
Background:	Full Gene Name: hemopoietic cell kinase Synonyms: JTK9
Gene ID:	3055
Pathways:	Activation of Innate immune Response , Cellular Response to Molecule of Bacterial Origin , Regulation of Actin Filament Polymerization , CXCR4-mediated Signaling Events , Thromboxane A2 Receptor Signaling

Application Details

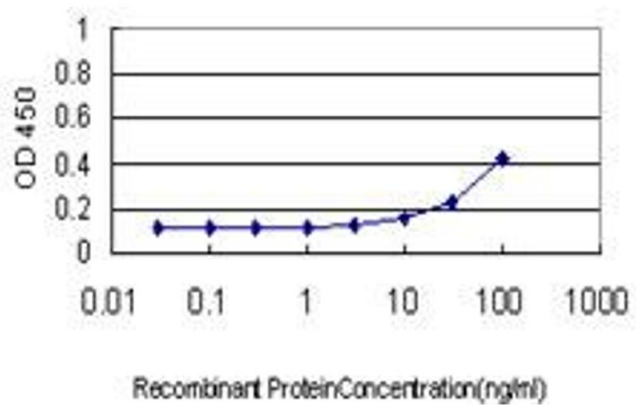
Application Notes:	Optimal working dilution should be determined by the investigator.
Restrictions:	For Research Use only

Handling

Buffer:	In 1x PBS, pH 7.4
Handling Advice:	Aliquot to avoid repeated freezing and thawing.
Storage:	-20 °C
Storage Comment:	Store at -20°C or lower. Aliquot to avoid repeated freezing and thawing.

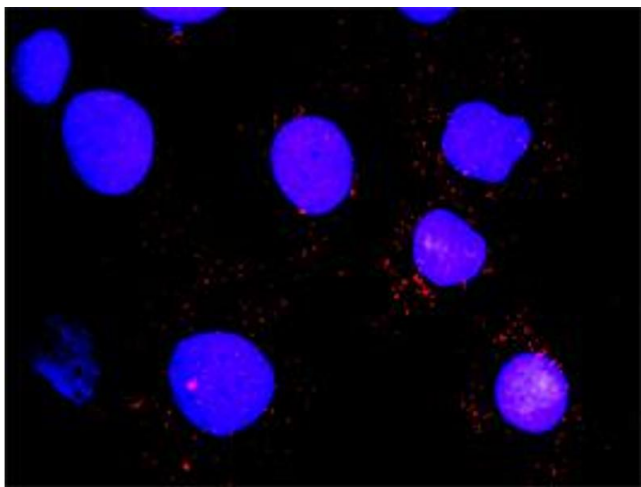
Publications

Product cited in:	Liu, Chen, Chau, Jan, Chen, Hsu, Lin, Juang, Lu, Cheng, Chen, Chang, Ting, Kao, Hsiao, Huang: " Analysis of protein-protein interactions in cross-talk pathways reveals CRKL protein as a novel prognostic marker in hepatocellular carcinoma." in: Molecular & cellular proteomics : MCP , Vol. 12, Issue 5, pp. 1335-49, (2013) (PubMed).
-------------------	---



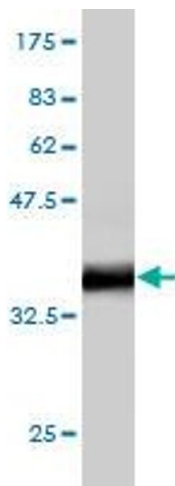
ELISA

Image 1. Detection limit for recombinant GST tagged HCK is approximately 3ng/ml as a capture antibody.



Proximity Ligation Assay

Image 2. Proximity Ligation Analysis of protein-protein interactions between FLT1 and HCK. Huh7 cells were stained with anti-FLT1 rabbit purified polyclonal 1:1200 and anti-HCK mouse monoclonal antibody 1:50. Each red dot represents the detection of protein-protein interaction complex, and nuclei were counterstained with DAPI (blue).



Western Blotting

Image 3. Western Blot detection against Immunogen (34.43 KDa) .