



[Go to Product page](#)

Datasheet for ABIN561271

## anti-HLA-DPB1 antibody (AA 1-258)

### 5 Images

#### Overview

Quantity:	100 µg
Target:	HLA-DPB1
Binding Specificity:	AA 1-258
Reactivity:	Human
Host:	Mouse
Clonality:	Monoclonal
Conjugate:	This HLA-DPB1 antibody is un-conjugated
Application:	Western Blotting (WB), ELISA, Immunohistochemistry (Paraffin-embedded Sections) (IHC (p)), Immunoprecipitation (IP)

#### Product Details

Purpose:	Mouse monoclonal antibody raised against a full length recombinant HLA-DPB1.
Immunogen:	HLA-DPB1 (AAH13184, 1 a.a. ~ 258 a.a) full-length recombinant protein with GST tag. MW of the GST tag alone is 26 KDa.
Sequence:	MMVLQVSAAP RTVALTALLM VLLTSVQGR ATPENVYVYQG RQECYAFNGT QRFLERYIYN REEYARFDSD VGEFRAVTEL GRPAAEYWNS QKDILEEKRA VPDRVCRHNY ELDEAVTLQR RVQPKVNVSP SKKGPLQHHN LLVCHVTDYF PGSIQVRWFL NGQEETAGVV STNLIRNGDW TFQILVMLEM TPQQGDVYIC QVEHTSLDSP VTVEWKAQSD SAQSKTLTGA GGFVLGLIIC GVGIFMHRRS KKVQRGSA
Clone:	6C6
Isotype:	IgG2a

## Product Details

---

Cross-Reactivity:	Human
Characteristics:	Antibody Reactive Against Recombinant Protein.

## Target Details

---

Target:	HLA-DPB1
Alternative Name:	HLA-DPB1 ( <a href="#">HLA-DPB1 Products</a> )
Background:	Full Gene Name: major histocompatibility complex, class II, DP beta 1 Synonyms: DPB1,HLA-DP1B
Gene ID:	3115
Pathways:	<a href="#">TCR Signaling</a> , <a href="#">Cancer Immune Checkpoints</a>

## Application Details

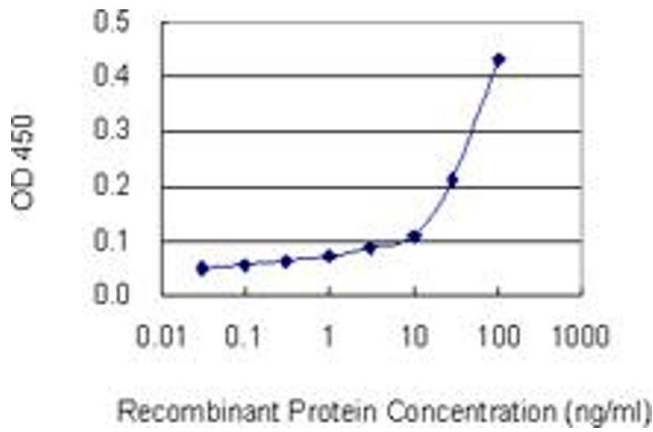
---

Application Notes:	Optimal working dilution should be determined by the investigator.
Restrictions:	For Research Use only

## Handling

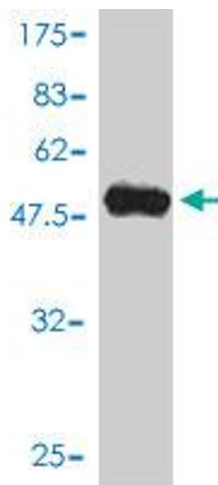
---

Buffer:	In 1x PBS, pH 7.4
Handling Advice:	Aliquot to avoid repeated freezing and thawing.
Storage:	-20 °C
Storage Comment:	Store at -20°C or lower. Aliquot to avoid repeated freezing and thawing.



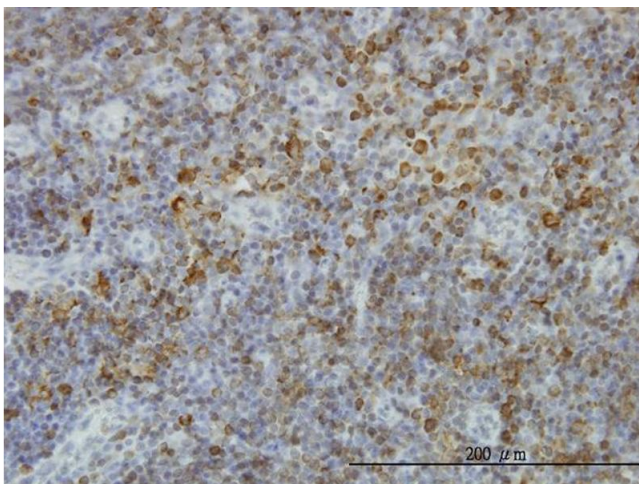
### ELISA

**Image 1.** Detection limit for recombinant GST tagged HLA-DPB1 is 10 ng/ml as a capture antibody.



### Western Blotting

**Image 2.** Western Blot detection against Immunogen (54.12 KDa) .



### Immunostaining

**Image 3.** Immunoperoxidase of monoclonal antibody to HLA-DPB1 on formalin-fixed paraffin-embedded human lymph node. [antibody concentration 0.5 ug/ml]

Please check the [product details page](#) for more images. Overall 5 images are available for ABIN561271.