



[Go to Product page](#)

Datasheet for ABIN561276
anti-HLF antibody (AA 1-295)

5 Images

1 Publication

Overview

Quantity:	100 µg
Target:	HLF
Binding Specificity:	AA 1-295
Reactivity:	Human
Host:	Mouse
Clonality:	Monoclonal
Conjugate:	This HLF antibody is un-conjugated
Application:	Western Blotting (WB), ELISA, Immunofluorescence (IF), RNA Interference (RNAi)

Product Details

Purpose:	Mouse monoclonal antibody raised against a full length recombinant HLF.
Immunogen:	HLF (AAH36093, 1 a.a. ~ 295 a.a) full-length recombinant protein with GST tag. MW of the GST tag alone is 26 KDa.
Sequence:	MEKMSRPLPL NPTFIPPPYG VLRSLLENPL KLPLHHEDAF SKDKDKEKKL DDESNSPTVP QSAFLGPTLW DKTLPYDGDT FQLEYMDLEE FLENGIPPS PSQHDHSPHP PGLQPASSAA PSVMDLSSRA SAPLHPGIPS PNCMQSPIRP GQLLPANRNT PSPIDPDTIQ VPGVYEPDPA DLALSSIPGQ EMFDPRKRKF SEEELKPQPM IKKARKVFIP DDLKDDKYWA RRRKNNMAAK RSRDARRLKE NQIAIRASFL EKENSALRQE VADLRKELGK CKNILAKYEA RHGPL
Clone:	M2
Isotype:	IgG1
Cross-Reactivity:	Human

Product Details

Characteristics: Antibody Reactive Against Recombinant Protein.

Target Details

Target: HLF

Alternative Name: HLF ([HLF Products](#))

Background: Full Gene Name: hepatic leukemia factor
Synonyms: MGC33822

Gene ID: 3131

Application Details

Application Notes: Optimal working dilution should be determined by the investigator.

Restrictions: For Research Use only

Handling

Buffer: In 1x PBS, pH 7.4

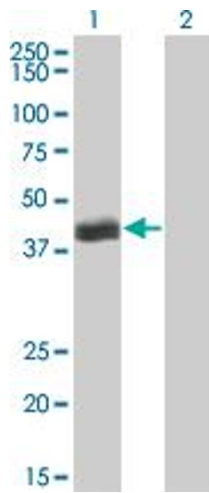
Handling Advice: Aliquot to avoid repeated freezing and thawing.

Storage: -20 °C

Storage Comment: Store at -20°C or lower. Aliquot to avoid repeated freezing and thawing.

Publications

Product cited in: Murakami, Higashi, Matsunaga, Koyanagi, Ohdo: "Circadian clock-controlled intestinal expression of the multidrug-resistance gene *mdr1a* in mice." in: **Gastroenterology**, Vol. 135, Issue 5, pp. 1636-1644.e3, (2008) ([PubMed](#)).

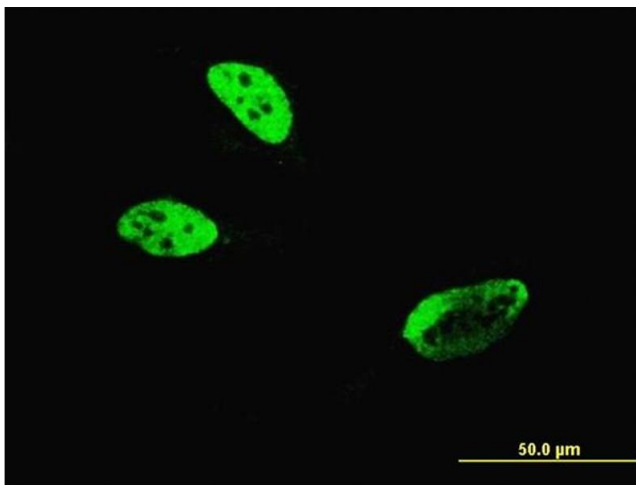


Western Blotting

Image 1. Western Blot analysis of HLF expression in transfected 293T cell line by HLF monoclonal antibody (M04), clone M2.

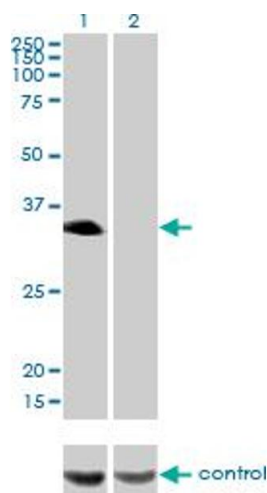
Lane 1: HLF transfected lysate(33.2 KDa).

Lane 2: Non-transfected lysate.



Immunofluorescence

Image 2. Immunofluorescence of monoclonal antibody to HLF on HeLa cell. [antibody concentration 10 ug/ml]



Western Blotting

Image 3. Western blot analysis of HLF over-expressed 293 cell line, cotransfected with HLF Validated Chimera RNAi (Lane 2) or non-transfected control (Lane 1). Blot probed with HLF monoclonal antibody (M04), clone M2. GAPDH (36.1 kDa) used as specificity and loading control.

Please check the [product details page](#) for more images. Overall 5 images are available for ABIN561276.