

Datasheet for ABIN561278  
**anti-MR1 antibody (AA 201-300)**[Go to Product page](#)

## 1 Image

## Overview

Quantity:	50 µL
Target:	MR1
Binding Specificity:	AA 201-300
Reactivity:	Human
Host:	Mouse
Clonality:	Polyclonal
Conjugate:	This MR1 antibody is un-conjugated
Application:	ELISA, Western Blotting (WB)

## Product Details

Purpose:	Mouse polyclonal antibody raised against a partial recombinant MR1.
Immunogen:	MR1 (NP_001522, 201 a.a. ~ 300 a.a) partial recombinant protein with GST tag.
Sequence:	TEPPLVRVNR KETFPGVTL FCKAHGFYPP EIYMTWMKNG EEIVQEIDYG DILPSGDGTY QAWASIELDP QSSNLYSCHV EHC GVHMLV LQ VPQESETIPL
Cross-Reactivity:	Human
Characteristics:	Antibody Reactive Against Recombinant Protein.

## Target Details

Target:	MR1
Alternative Name:	MR1 ( <a href="#">MR1 Products</a> )

## Target Details

Background:	Full Gene Name: major histocompatibility complex, class I-related Synonyms: HLALS
Gene ID:	3140
NCBI Accession:	<a href="#">NM_001531</a>
Pathways:	<a href="#">Regulation of Leukocyte Mediated Immunity</a> , <a href="#">Positive Regulation of Immune Effector Process</a> , <a href="#">Production of Molecular Mediator of Immune Response</a> , <a href="#">Cancer Immune Checkpoints</a>

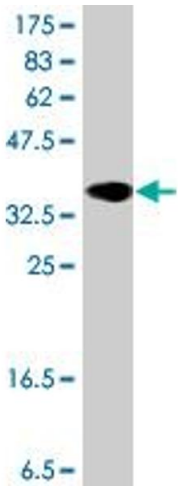
## Application Details

Application Notes:	Optimal working dilution should be determined by the investigator.
Restrictions:	For Research Use only

## Handling

Format:	Liquid
Buffer:	50 % glycerol
Handling Advice:	Aliquot to avoid repeated freezing and thawing.
Storage:	-20 °C
Storage Comment:	Store at -20°C or lower. Aliquot to avoid repeated freezing and thawing.

## Images



### Western Blotting

**Image 1.** Western Blot detection against Immunogen (37.11 kDa) .