

Datasheet for ABIN561379

anti-HSPA1B antibody (AA 531-611)

9 Images

2 Publications

[Go to Product page](#)

Overview

Quantity:	100 µg
Target:	HSPA1B
Binding Specificity:	AA 531-611
Reactivity:	Human
Host:	Mouse
Clonality:	Monoclonal
Conjugate:	This HSPA1B antibody is un-conjugated
Application:	Western Blotting (WB), ELISA, Immunofluorescence (IF), Immunohistochemistry (Paraffin-embedded Sections) (IHC (p)), Proximity Ligation Assay (PLA)

Product Details

Purpose:	Mouse monoclonal antibody raised against a partial recombinant HSPA1B.
Immunogen:	HSPA1B (NP_005336, 531 a.a. ~ 611 a.a) partial recombinant protein with GST tag. MW of the GST tag alone is 26 KDa.
Sequence:	VQRERVSARK ALESYAFNMK SAVEDEGLKG KISEADKKKV LDKCQEVIW LDANTLAEKD EFEHKRKELE QVCNPIISGL Y
Clone:	3B7
Isotype:	IgG2a
Cross-Reactivity:	Human, Mouse, Rat
Characteristics:	Antibody Reactive Against Recombinant Protein.

Target Details

Target:	HSPA1B
Alternative Name:	HSPA1B (HSPA1B Products)
Background:	Full Gene Name: heat shock 70 kDa protein 1B Synonyms: FLJ54328,HSP70-1B,HSP70-2,HSPA1A
Gene ID:	3304
NCBI Accession:	NM_005345

Application Details

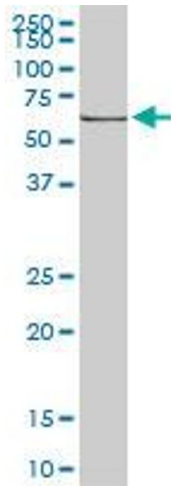
Application Notes:	Optimal working dilution should be determined by the investigator.
Restrictions:	For Research Use only

Handling

Buffer:	In 1x PBS, pH 7.4
Handling Advice:	Aliquot to avoid repeated freezing and thawing.
Storage:	-20 °C
Storage Comment:	Store at -20°C or lower. Aliquot to avoid repeated freezing and thawing.

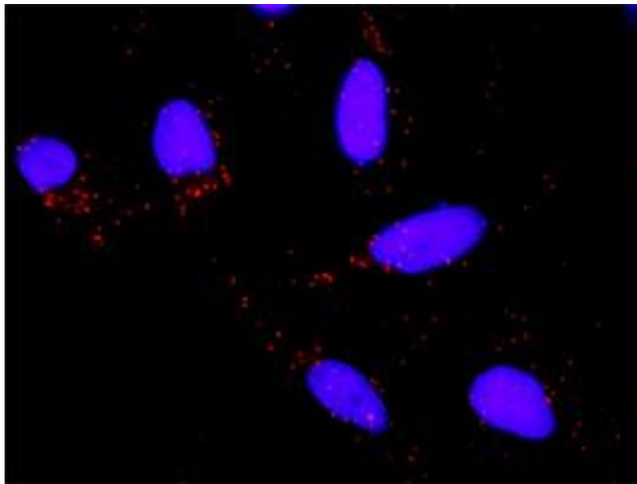
Publications

Product cited in:	<p>Picard, Gagaoua, Micol, Cassar-Malek, Hocquette, Terlouw: "Inverse relationships between biomarkers and beef tenderness according to contractile and metabolic properties of the muscle." in: Journal of agricultural and food chemistry, Vol. 62, Issue 40, pp. 9808-18, (2014) (PubMed).</p> <p>Guillemin, Bonnet, Jurie, Picard: "Functional analysis of beef tenderness." in: Journal of proteomics, Vol. 75, Issue 2, pp. 352-65, (2011) (PubMed).</p>
-------------------	--



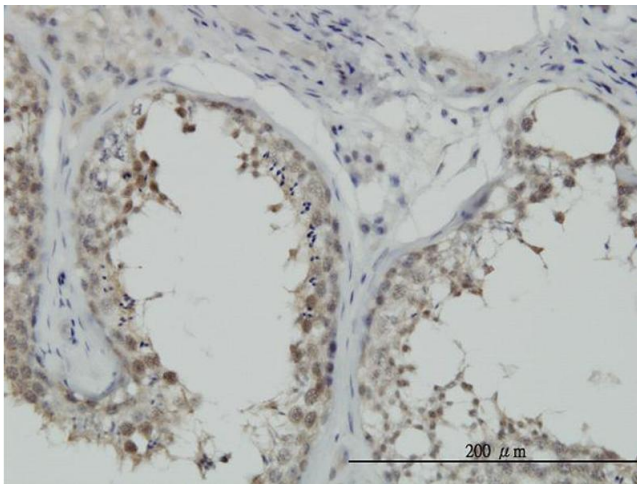
Western Blotting

Image 1. HSPA1B monoclonal antibody (M02), clone 3B7. Western Blot analysis of HSPA1B expression in Raw 264.7 .



Proximity Ligation Assay

Image 2. Proximity Ligation Analysis of protein-protein interactions between TP53 and HSPA1B. HeLa cells were stained with anti-TP53 rabbit purified polyclonal 1:1200 and anti-HSPA1B mouse monoclonal antibody 1:50. Each red dot represents the detection of protein-protein interaction complex, and nuclei were counterstained with DAPI (blue).



Immunostaining

Image 3. Immunoperoxidase of monoclonal antibody to HSPA1B on formalin-fixed paraffin-embedded human testis. [antibody concentration 6 ug/ml]

Please check the [product details page](#) for more images. Overall 9 images are available for ABIN561379.