



[Go to Product page](#)

Datasheet for ABIN561410  
**anti-ID1 antibody (AA 1-155)**

5 Images

1 Publication

### Overview

Quantity:	100 µg
Target:	ID1
Binding Specificity:	AA 1-155
Reactivity:	Human
Host:	Mouse
Clonality:	Monoclonal
Conjugate:	This ID1 antibody is un-conjugated
Application:	Western Blotting (WB), ELISA, Immunofluorescence (IF)

### Product Details

Purpose:	Mouse monoclonal antibody raised against a full length recombinant ID1.
Immunogen:	ID1 (AAH00613.1, 1 a.a. ~ 155 a.a) full-length recombinant protein with GST tag. MW of the GST tag alone is 26 KDa.
Sequence:	MKVASGSTAT AAAGPSCALK AGKTASGAGE VVRCLSEQSV AISRCAGGAG ARLPALLDEQ QVNVLLYDMN GCYSRLKELV PTLPQNRKVS KVEILQHVID YIRDLQLELN SESEVGTPGG RGLPVRAPLS TLNGEISALT AEAACVPADD RILCR
Clone:	4G11
Isotype:	IgG2a
Cross-Reactivity:	Human
Characteristics:	Antibody Reactive Against Recombinant Protein.

## Target Details

Target:	ID1
Alternative Name:	ID1 ( <a href="#">ID1 Products</a> )
Background:	Full Gene Name: inhibitor of DNA binding 1, dominant negative helix-loop-helix protein Synonyms: ID,bHLHb24
Gene ID:	3397

## Application Details

Application Notes:	Optimal working dilution should be determined by the investigator.
Restrictions:	For Research Use only

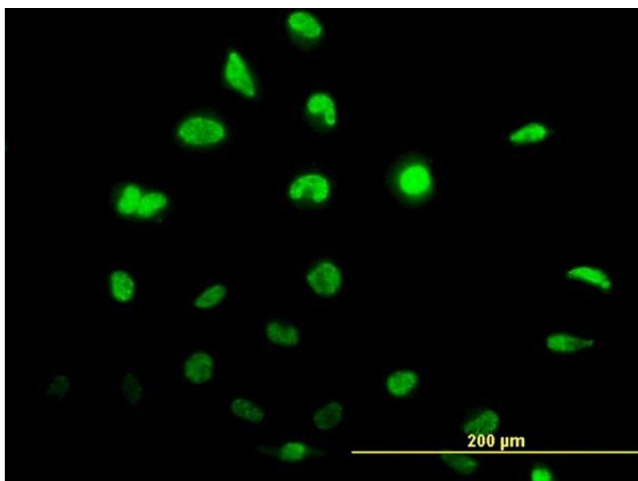
## Handling

Buffer:	In 1x PBS, pH 7.4
Handling Advice:	Aliquot to avoid repeated freezing and thawing.
Storage:	-20 °C
Storage Comment:	Store at -20°C or lower. Aliquot to avoid repeated freezing and thawing.

## Publications

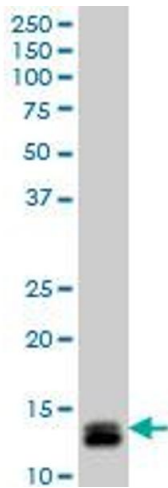
Product cited in:	Phi, Choi, Lim, Lee, Wang, Park, Kim: "ID3 contributes to cerebrospinal fluid seeding and poor prognosis in medulloblastoma." in: <b>BMC cancer</b> , Vol. 13, pp. 291, (2013) ( <a href="#">PubMed</a> ).
-------------------	--

## Images



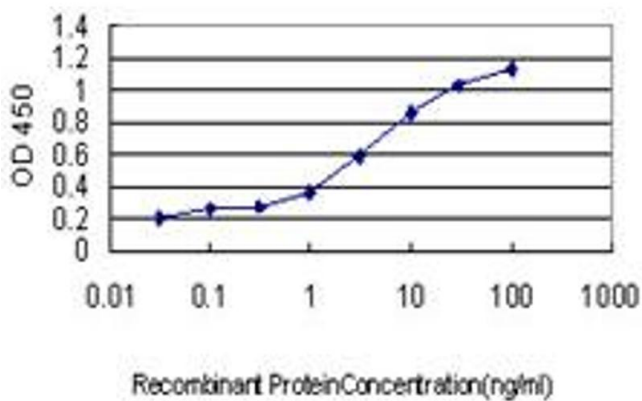
### Immunofluorescence

**Image 1.** Immunofluorescence of monoclonal antibody to ID1 on HeLa cell. [antibody concentration 10 ug/ml]



### Western Blotting

**Image 2.** ID1 monoclonal antibody (M04), clone 4G11 Western Blot analysis of ID1 expression in Y-79 .



### ELISA

**Image 3.** Detection limit for recombinant GST tagged ID1 is approximately 0.03ng/ml as a capture antibody.

Please check the [product details page](#) for more images. Overall 5 images are available for ABIN561410.