



[Go to Product page](#)

Datasheet for ABIN561521
anti-IRF2 antibody (AA 216-315)

1 Image

Overview

Quantity:	50 µL
Target:	IRF2
Binding Specificity:	AA 216-315
Reactivity:	Human
Host:	Mouse
Clonality:	Polyclonal
Conjugate:	This IRF2 antibody is un-conjugated
Application:	Western Blotting (WB), ELISA

Product Details

Purpose:	Mouse polyclonal antibody raised against a partial recombinant IRF2.
Immunogen:	IRF2 (NP_002190, 216 a.a. ~ 315 a.a) partial recombinant protein with GST tag.
Sequence:	MSELYPLQIS PVSSYAASET TDSVPSDEES AEGRPHWRKR NIEGKQYLSN MGTRGSYLLP GMASFVTSNK PDLQVTIKKE SNPVPYNSSW PPFQDLPLSS
Cross-Reactivity:	Human
Characteristics:	Antibody Reactive Against Recombinant Protein.

Target Details

Target:	IRF2
Alternative Name:	IRF2 (IRF2 Products)

Target Details

Background: Full Gene Name: interferon regulatory factor 2
Synonyms: DKFZp686F0244,IRF-2

Gene ID: 3660

NCBI Accession: [NM_002199](#)

Application Details

Application Notes: Optimal working dilution should be determined by the investigator.

Restrictions: For Research Use only

Handling

Format: Liquid

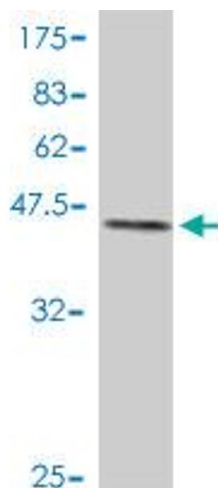
Buffer: 50 % glycerol

Handling Advice: Aliquot to avoid repeated freezing and thawing.

Storage: -20 °C

Storage Comment: Store at -20°C or lower. Aliquot to avoid repeated freezing and thawing.

Images



Western Blotting

Image 1. Western Blot detection against Immunogen (37.11 kDa).