



[Go to Product page](#)

Datasheet for ABIN561528  
**anti-IRF5 antibody (AA 395-504)**

6 Images

Overview

Quantity:	100 µg
Target:	IRF5
Binding Specificity:	AA 395-504
Reactivity:	Human
Host:	Mouse
Clonality:	Monoclonal
Conjugate:	This IRF5 antibody is un-conjugated
Application:	Western Blotting (WB), ELISA, Immunoprecipitation (IP), Immunofluorescence (IF)

Product Details

Purpose:	Mouse monoclonal antibody raised against a partial recombinant IRF5.
Immunogen:	IRF5 (NP_002191, 395 a.a. ~ 504 a.a) partial recombinant protein with GST tag. MW of the GST tag alone is 26 KDa.
Sequence:	TPPPFEIFFC FGEEWPDRKP REKKLITVQV VPVAARLLL MFSGELSWSA DSIRLQISNP DLKDRMVEQF KELHHIWQSQ QRLQPVAQAP PGAGLGVGQG PWPMPHAGMQ
Clone:	1H6
Isotype:	IgG1
Cross-Reactivity:	Human, Mouse
Characteristics:	Antibody Reactive Against Recombinant Protein.

## Target Details

Target:	IRF5
Alternative Name:	IRF5 ( <a href="#">IRF5 Products</a> )
Background:	Full Gene Name: interferon regulatory factor 5 Synonyms: SLEB10
Gene ID:	3663
NCBI Accession:	<a href="#">NM_002200</a>
Pathways:	<a href="#">TLR Signaling</a> , <a href="#">Autophagy</a>

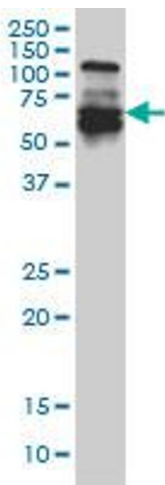
## Application Details

Application Notes:	Optimal working dilution should be determined by the investigator.
Restrictions:	For Research Use only

## Handling

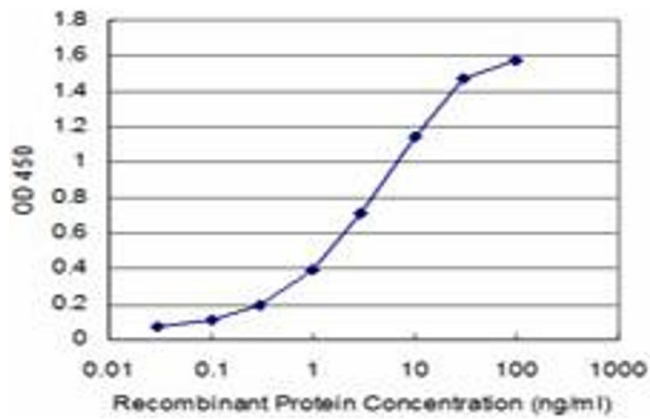
Buffer:	In 1x PBS, pH 7.4
Handling Advice:	Aliquot to avoid repeated freezing and thawing.
Storage:	-20 °C
Storage Comment:	Store at -20°C or lower. Aliquot to avoid repeated freezing and thawing.

## Images



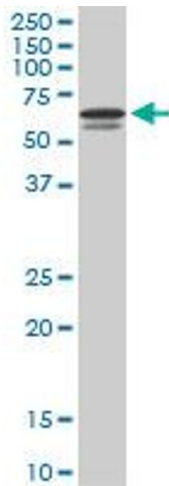
### Western Blotting

**Image 1.** IRF5 monoclonal antibody (M03), clone 1H6  
Western Blot analysis of IRF5 expression in A-431 .



### ELISA

**Image 2.** Detection limit for recombinant GST tagged IRF5 is approximately 0.1 ng/ml as a capture antibody.



### Western Blotting

**Image 3.** IRF5 monoclonal antibody (M03), clone 1H6. Western Blot analysis of IRF5 expression in NIH/3T3.

Please check the [product details page](#) for more images. Overall 6 images are available for ABIN561528.