



[Go to Product page](#)

Datasheet for ABIN561557

anti-ITGB6 antibody (AA 604-707)

1 Image

Overview

Quantity:	50 µL
Target:	ITGB6
Binding Specificity:	AA 604-707
Reactivity:	Human
Host:	Mouse
Clonality:	Polyclonal
Conjugate:	This ITGB6 antibody is un-conjugated
Application:	Western Blotting (WB), ELISA

Product Details

Purpose:	Mouse polyclonal antibody raised against a partial recombinant ITGB6.
Immunogen:	ITGB6 (NM_000888, 604 a.a. ~ 707 a.a) partial recombinant protein with GST tag.
Sequence:	CTNPGASGPT CERCPTCGDP CNSKRSCIEC HLSAAGQARE ECVDKCKLAG ATISEEEDFS KDGSVSCSLQ GENECLITFL ITTDNEGKTI IHSINEKDCP KPPN
Cross-Reactivity:	Human
Characteristics:	Antibody Reactive Against Recombinant Protein.

Target Details

Target:	ITGB6
Alternative Name:	ITGB6 (ITGB6 Products)

Target Details

Background: Full Gene Name: integrin, beta 6
Synonyms:

Gene ID: 3694

NCBI Accession: [NM_000888](#)

Application Details

Application Notes: Optimal working dilution should be determined by the investigator.

Restrictions: For Research Use only

Handling

Format: Liquid

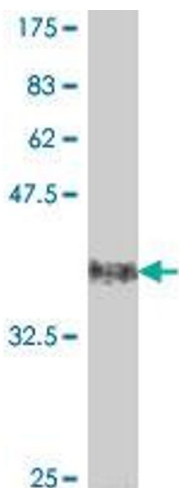
Buffer: 50 % glycerol

Handling Advice: Aliquot to avoid repeated freezing and thawing.

Storage: -20 °C

Storage Comment: Store at -20°C or lower. Aliquot to avoid repeated freezing and thawing.

Images



Western Blotting

Image 1. Western Blot detection against Immunogen (37.55 KDa) .