

Datasheet for ABIN561564
anti-ITPK1 antibody (AA 1-314)



[Go to Product page](#)

4 Images

Overview

Quantity:	100 µg
Target:	ITPK1
Binding Specificity:	AA 1-314
Reactivity:	Human
Host:	Mouse
Clonality:	Monoclonal
Conjugate:	This ITPK1 antibody is un-conjugated
Application:	Western Blotting (WB), ELISA, RNA Interference (RNAi)

Product Details

Purpose:	Mouse monoclonal antibody raised against a full length recombinant ITPK1.
Immunogen:	ITPK1 (AAH03622, 1 a.a. ~ 314 a.a) full-length recombinant protein with GST tag. MW of the GST tag alone is 26 KDa.
Sequence:	MQTFLKGKRV GYWLSEKKIK KLNFAQFAEL CRKRGMEVVQ LNLSRPIEEQ GPLDVIIHKL TDVILEADQN DSQSLELVHR FQEYIDAHPE TIVLDPLPAI RTLLDRSKSY ELIRKIEAYM EDDRICSPPF MELTSLCGDD TMRLLEKNGL TFPFICKTRV AHGTNSHEMA IVFNQEGLNA IQPPCVVQNF INHNAVLYKV FVVGESYTVV QRPSLKNFSA GTSDRESIFF NSHNVSKPES SSVLTELDKI EGVFERPSDE VIRELSRALR QALGVSLFGI DIIINNQTGQ HAVIDINAFP GDCQVCFIEG WKTD
Clone:	2C8
Isotype:	IgG3

Product Details

Cross-Reactivity:	Human
Characteristics:	Antibody Reactive Against Recombinant Protein.

Target Details

Target:	ITPK1
Alternative Name:	ITPK1 (ITPK1 Products)
Background:	Full Gene Name: inositol 1,3,4-triphosphate 5/6 kinase Synonyms: ITRPK1
Gene ID:	3705

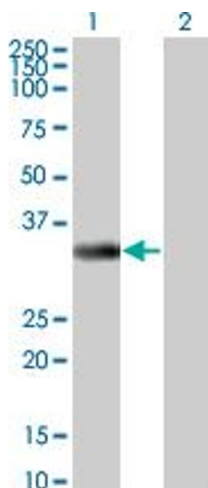
Application Details

Application Notes:	Optimal working dilution should be determined by the investigator.
Restrictions:	For Research Use only

Handling

Buffer:	In 1x PBS, pH 7.4
Handling Advice:	Aliquot to avoid repeated freezing and thawing.
Storage:	-20 °C
Storage Comment:	Store at -20°C or lower. Aliquot to avoid repeated freezing and thawing.

Images

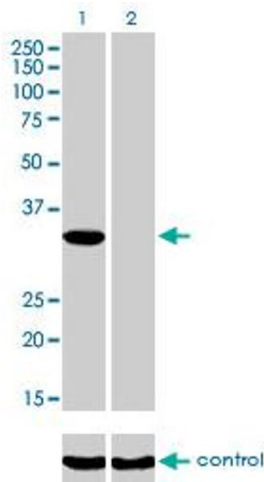


Western Blotting

Image 1. Western Blot analysis of ITPK1 expression in transfected 293T cell line by ITPK1 monoclonal antibody (M01), clone 2C8.

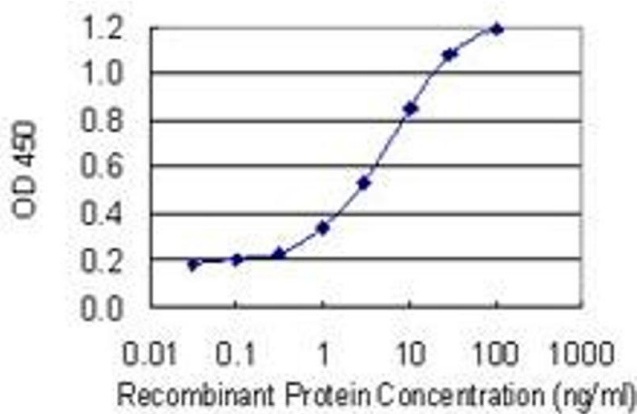
Lane 1: ITPK1 transfected lysate(35.6 KDa).

Lane 2: Non-transfected lysate.



Western Blotting

Image 2. Western blot analysis of ITPK1 over-expressed 293 cell line, cotransfected with ITPK1 Validated Chimera RNAi (Lane 2) or non-transfected control (Lane 1). Blot probed with ITPK1 monoclonal antibody (M01), clone 2C8. GAPDH (36.1 kDa) used as specificity and loading control.



ELISA

Image 3. Detection limit for recombinant GST tagged ITPK1 is 0.1 ng/ml as a capture antibody.

Please check the [product details page](#) for more images. Overall 4 images are available for ABIN561564.