



[Go to Product page](#)

Datasheet for ABIN561565

anti-ITPKB antibody (AA 545-643)

4 Images

1 Publication

Overview

Quantity:	100 µg
Target:	ITPKB
Binding Specificity:	AA 545-643
Reactivity:	Human
Host:	Mouse
Clonality:	Monoclonal
Conjugate:	This ITPKB antibody is un-conjugated
Application:	Western Blotting (WB), ELISA

Product Details

Purpose:	Mouse monoclonal antibody raised against a partial recombinant ITPKB.
Immunogen:	ITPKB (NP_002212, 545 a.a. ~ 643 a.a) partial recombinant protein with GST tag. MW of the GST tag alone is 26 KDa.
Sequence:	PELLPQDQDK PFLRKACSPS NIPAVIITDM GTQEDGALEE TQGSPRGNLP LRLKSSSSAS STGFSSSYED SEEDISSDPE RTLDPNSAFL HTLDQKQPR
Clone:	2F8
Isotype:	IgG2b
Cross-Reactivity:	Human
Characteristics:	Antibody Reactive Against Recombinant Protein.

Target Details

Target:	ITPKB
Alternative Name:	ITPKB (ITPKB Products)
Background:	Full Gene Name: inositol 1,4,5-trisphosphate 3-kinase B Synonyms: IP3K,IP3K-B,IP3KB,PIG37
Gene ID:	3707
NCBI Accession:	NM_002221

Application Details

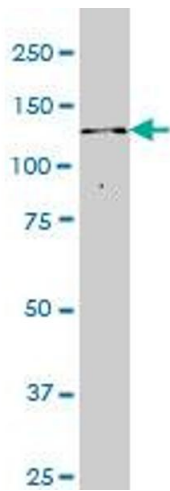
Application Notes:	Optimal working dilution should be determined by the investigator.
Restrictions:	For Research Use only

Handling

Buffer:	In 1x PBS, pH 7.4
Handling Advice:	Aliquot to avoid repeated freezing and thawing.
Storage:	-20 °C
Storage Comment:	Store at -20°C or lower. Aliquot to avoid repeated freezing and thawing.

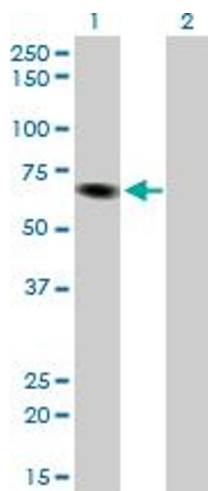
Publications

Product cited in:	Nalaskowski, Fliegert, Ernst, Brehm, Fanick, Windhorst, Lin, Giehler, Hein, Lin, Mayr: "Human inositol 1,4,5-trisphosphate 3-kinase isoform B (IP3KB) is a nucleocytoplasmic shuttling protein specifically enriched at cortical actin filaments and at invaginations of the nuclear envelope." in: The Journal of biological chemistry , Vol. 286, Issue 6, pp. 4500-10, (2011) (PubMed).
-------------------	---



Western Blotting

Image 1. ITPKB monoclonal antibody (M01), clone 2F8 Western Blot analysis of ITPKB expression in Jurkat .

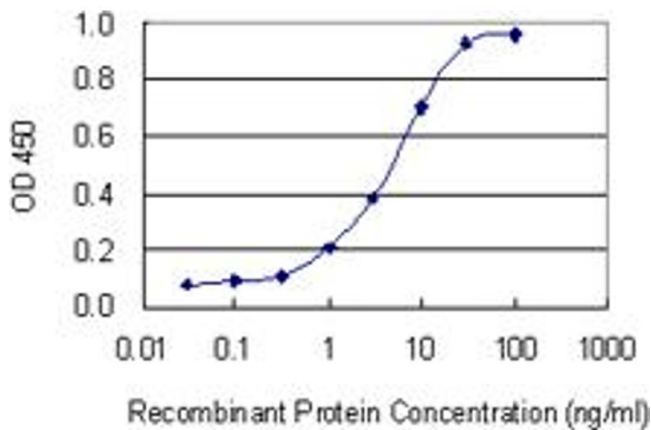


Western Blotting

Image 2. Western Blot analysis of ITPKB expression in transfected 293T cell line by ITPKB monoclonal antibody (M01), clone 2F8.

Lane 1: ITPKB transfected lysate(67.4 KDa).

Lane 2: Non-transfected lysate.



ELISA

Image 3. Detection limit for recombinant GST tagged ITPKB is 0.1 ng/ml as a capture antibody.

Please check the [product details page](#) for more images. Overall 4 images are available for ABIN561565.