



[Go to Product page](#)

Datasheet for ABIN561573

anti-KAL1 antibody (AA 548-657)

2 Images

1 Publication

Overview

Quantity:	50 µL
Target:	KAL1
Binding Specificity:	AA 548-657
Reactivity:	Human
Host:	Mouse
Clonality:	Polyclonal
Conjugate:	This KAL1 antibody is un-conjugated
Application:	Western Blotting (WB), ELISA

Product Details

Purpose:	Mouse polyclonal antibody raised against a partial recombinant KAL1.
Immunogen:	KAL1 (NP_000207, 548 a.a. ~ 657 a.a) partial recombinant protein with GST tag.
Sequence:	LAKPENLSAS FIVQDVNITG HFSWKMAKAN LYQPMTGFQV TWAEVTTESR QNSLPNSIIS QSQILPSDHY VLTVPNLRPS TLYRLEVQVL TPGGEGPATI KTFRTPELPP
Cross-Reactivity:	Human
Characteristics:	Antibody Reactive Against Recombinant Protein.

Target Details

Target:	KAL1
Alternative Name:	KAL1 (KAL1 Products)

Target Details

Background: Full Gene Name: Kallmann syndrome 1 sequence
Synonyms: ADMLX,HHA,KAL,KALIG-1,KMS

Gene ID: 3730

NCBI Accession: [NM_000216](#)

Application Details

Application Notes: Optimal working dilution should be determined by the investigator.

Restrictions: For Research Use only

Handling

Format: Liquid

Buffer: 50 % glycerol

Handling Advice: Aliquot to avoid repeated freezing and thawing.

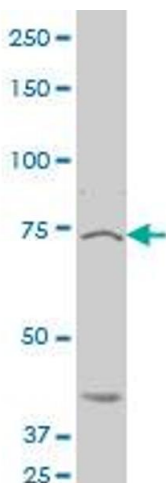
Storage: -20 °C

Storage Comment: Store at -20°C or lower. Aliquot to avoid repeated freezing and thawing.

Publications

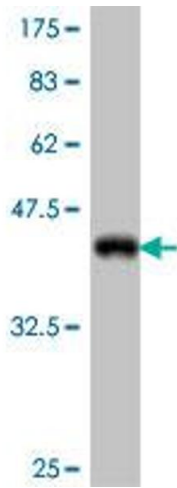
Product cited in: Hu, Yu, Shaw, Pask, Renfree: "Kallmann syndrome 1 gene is expressed in the marsupial gonad."
in: **Biology of reproduction**, Vol. 84, Issue 3, pp. 595-603, (2011) ([PubMed](#)).

Images



Western Blotting

Image 1. KAL1 polyclonal antibody (A01), Lot # ABNOVA060629QCS1 Western Blot analysis of KAL1 expression in HeLa S3 NE .



Western Blotting

Image 2. Western Blot detection against Immunogen (38.21 kDa).