



Datasheet for ABIN561574
anti-KAL1 antibody (AA 548-657)



[Go to Product page](#)

2 Images

1 Publication

Overview

Quantity:	100 µg
Target:	KAL1
Binding Specificity:	AA 548-657
Reactivity:	Human
Host:	Mouse
Clonality:	Monoclonal
Conjugate:	This KAL1 antibody is un-conjugated
Application:	Western Blotting (WB), ELISA

Product Details

Purpose:	Mouse monoclonal antibody raised against a partial recombinant KAL1.
Immunogen:	KAL1 (NP_000207, 548 a.a. ~ 657 a.a) partial recombinant protein with GST tag. MW of the GST tag alone is 26 KDa.
Sequence:	LAKPENLSAS FIVQDVNITG HFSWKMAKAN LYQPMTGFQV TWAEVTTESR QNSLPNSIIS QSQILPSDHY VLTVPNLRPS TLYRLEVQVL TPGGEGPATI KTFRTPELPP
Clone:	2E8
Isotype:	IgG2a
Cross-Reactivity:	Human
Characteristics:	Antibody Reactive Against Recombinant Protein.

Target Details

Target:	KAL1
Alternative Name:	KAL1 (KAL1 Products)
Background:	Full Gene Name: Kallmann syndrome 1 sequence Synonyms: ADMLX,HHA,KAL,KALIG-1,KMS
Gene ID:	3730
NCBI Accession:	NM_000216

Application Details

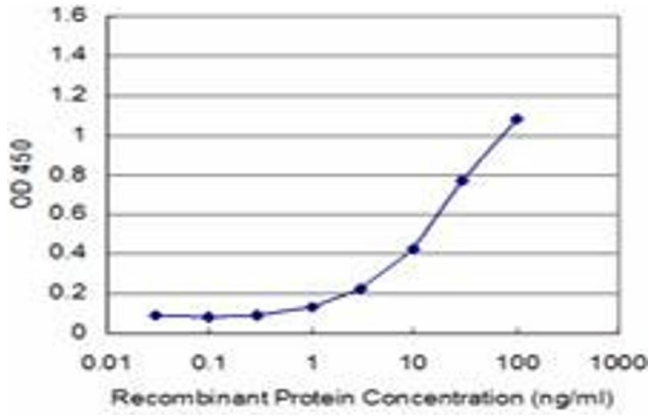
Application Notes:	Optimal working dilution should be determined by the investigator.
Restrictions:	For Research Use only

Handling

Buffer:	In 1x PBS, pH 7.4
Handling Advice:	Aliquot to avoid repeated freezing and thawing.
Storage:	-20 °C
Storage Comment:	Store at -20°C or lower. Aliquot to avoid repeated freezing and thawing.

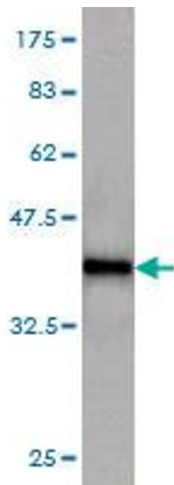
Publications

Product cited in:	Tengara, Tominaga, Kamo, Taneda, Negi, Ogawa, Takamori: "Keratinocyte-derived anosmin-1, an extracellular glycoprotein encoded by the X-linked Kallmann syndrome gene, is involved in modulation of epidermal nerve density in atopic dermatitis." in: Journal of dermatological science , Vol. 58, Issue 1, pp. 64-71, (2010) (PubMed).
-------------------	---



ELISA

Image 1. Detection limit for recombinant GST tagged KAL1 is approximately 1 ng/ml as a capture antibody.



Western Blotting

Image 2. Western Blot detection against Immunogen (37.84 KDa) .