

Datasheet for ABIN561578
anti-KCNE1 antibody (AA 67-129)[Go to Product page](#)

1 Image

Overview

| | |
|----------------------|--------------------------------------|
| Quantity: | 50 µL |
| Target: | KCNE1 |
| Binding Specificity: | AA 67-129 |
| Reactivity: | Human |
| Host: | Mouse |
| Clonality: | Polyclonal |
| Conjugate: | This KCNE1 antibody is un-conjugated |
| Application: | Western Blotting (WB), ELISA |

Product Details

| | |
|-------------------|--|
| Purpose: | Mouse polyclonal antibody raised against a partial recombinant KCNE1. |
| Immunogen: | KCNE1 (NP_000210, 67 a.a. ~ 129 a.a) partial recombinant protein with GST tag. |
| Sequence: | RSKKLEHSND PFNVYIESDA WQEKDKAYVQ ARVLESYRSC YVVENHLAIE QPNTHLPETK PSP |
| Cross-Reactivity: | Human |
| Characteristics: | Antibody Reactive Against Recombinant Protein. |

Target Details

| | |
|-------------------|---|
| Target: | KCNE1 |
| Alternative Name: | KCNE1 (KCNE1 Products) |
| Background: | Full Gene Name: potassium voltage-gated channel, Isk-related family, member 1 |

Target Details

| | |
|-----------------|---|
| | Synonyms: FLJ18426,FLJ38123,FLJ94103,ISK,JLNS,JLNS2,LQT2/5,LQT5,MGC33114,MinK |
| Gene ID: | 3753 |
| NCBI Accession: | NM_000219 |
| Pathways: | Sensory Perception of Sound |

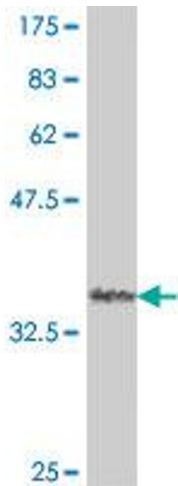
Application Details

| | |
|--------------------|--|
| Application Notes: | Optimal working dilution should be determined by the investigator. |
| Restrictions: | For Research Use only |

Handling

| | |
|------------------|--|
| Format: | Liquid |
| Buffer: | 50 % glycerol |
| Handling Advice: | Aliquot to avoid repeated freezing and thawing. |
| Storage: | -20 °C |
| Storage Comment: | Store at -20°C or lower. Aliquot to avoid repeated freezing and thawing. |

Images



Western Blotting

Image 1. Western Blot detection against Immunogen (33.04 KDa) .