

Datasheet for ABIN561579
anti-KCNE1 antibody (AA 67-129)

4 Images

1 Publication

[Go to Product page](#)

Overview

Quantity:	100 µg
Target:	KCNE1
Binding Specificity:	AA 67-129
Reactivity:	Human
Host:	Mouse
Clonality:	Monoclonal
Conjugate:	This KCNE1 antibody is un-conjugated
Application:	Western Blotting (WB), ELISA, RNA Interference (RNAi)

Product Details

Purpose:	Mouse monoclonal antibody raised against a partial recombinant KCNE1.
Immunogen:	KCNE1 (NP_000210, 67 a.a. ~ 129 a.a) partial recombinant protein with GST tag. MW of the GST tag alone is 26 KDa.
Sequence:	RSKKLEHSND PFNVYIESDA WQEKDKAYVQ ARVLESYRSC YVVENHLAIE QPNTHLPETK PSP
Clone:	5B12
Isotype:	IgG1
Cross-Reactivity:	Human
Characteristics:	Antibody Reactive Against Recombinant Protein.

Target Details

Target:	KCNE1
Alternative Name:	KCNE1 (KCNE1 Products)
Background:	Full Gene Name: potassium voltage-gated channel, Isk-related family, member 1 Synonyms: FLJ18426,FLJ38123,FLJ94103,ISK,JLNS,JLNS2,LQT2/5,LQT5,MGC33114,Mink
Gene ID:	3753
NCBI Accession:	NM_000219
Pathways:	Sensory Perception of Sound

Application Details

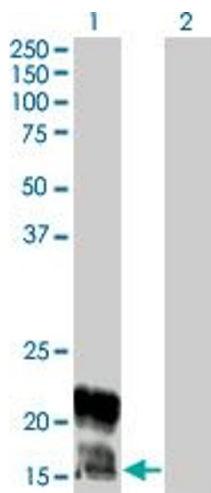
Application Notes:	Optimal working dilution should be determined by the investigator.
Restrictions:	For Research Use only

Handling

Buffer:	In 1x PBS, pH 7.4
Handling Advice:	Aliquot to avoid repeated freezing and thawing.
Storage:	-20 °C
Storage Comment:	Store at -20°C or lower. Aliquot to avoid repeated freezing and thawing.

Publications

Product cited in:	Wang, Zankov, Jiang, Zhang, Henderson, Tseng: "[Ca2+]i elevation and oxidative stress induce KCNQ1 protein translocation from the cytosol to the cell surface and increase slow delayed rectifier (IKs) in cardiac myocytes." in: The Journal of biological chemistry , Vol. 288, Issue 49, pp. 35358-71, (2013) (PubMed).
-------------------	---

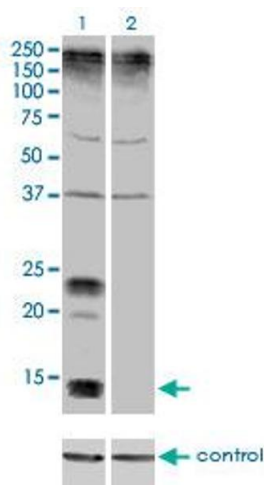


Western Blotting

Image 1. Western Blot analysis of KCNE1 expression in transfected 293T cell line by KCNE1 monoclonal antibody (M01), clone 5B12.

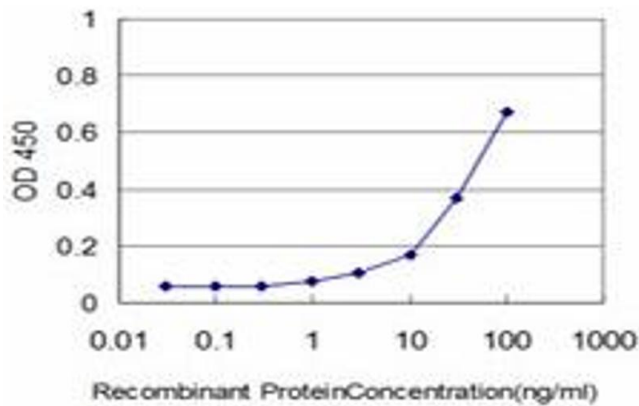
Lane 1: KCNE1 transfected lysate(14.7 kDa).

Lane 2: Non-transfected lysate.



Western Blotting

Image 2. Western blot analysis of KCNE1 over-expressed 293 cell line, cotransfected with KCNE1 Validated Chimera RNAi (Lane 2) or non-transfected control (Lane 1). Blot probed with KCNE1 monoclonal antibody (M01), clone 5B12. GAPDH (36.1 kDa) used as specificity and loading control.



ELISA

Image 3. Detection limit for recombinant GST tagged KCNE1 is approximately 3ng/ml as a capture antibody.

Please check the [product details page](#) for more images. Overall 4 images are available for ABIN561579.