

Datasheet for ABIN561586  
**anti-KCNJ15 antibody (AA 290-355)**[Go to Product page](#)

## 4 Images

## Overview

Quantity:	100 µg
Target:	KCNJ15
Binding Specificity:	AA 290-355
Reactivity:	Human
Host:	Mouse
Clonality:	Monoclonal
Conjugate:	This KCNJ15 antibody is un-conjugated
Application:	Western Blotting (WB), ELISA, RNA Interference (RNAi)

## Product Details

Purpose:	Mouse monoclonal antibody raised against a partial recombinant KCNJ15.
Immunogen:	KCNJ15 (NP_002234, 290 a.a. ~ 355 a.a) partial recombinant protein with GST tag. MW of the GST tag alone is 26 KDa.
Sequence:	TSAVCQSRTS YIP EEIYWGF EFVPVVSLSK NGKYVADFSQ FEQIRKSPDC TFYCADSEKQ QLEEKY
Clone:	1B2
Isotype:	IgG2a
Cross-Reactivity:	Human
Characteristics:	Antibody Reactive Against Recombinant Protein.

## Target Details

Target:	KCNJ15
Alternative Name:	KCNJ15 ( <a href="#">KCNJ15 Products</a> )
Background:	Full Gene Name: potassium inwardly-rectifying channel, subfamily J, member 15 Synonyms: IRKK,KIR1.3,KIR4.2,MGC13584
Gene ID:	3772
NCBI Accession:	<a href="#">NM_002243</a>

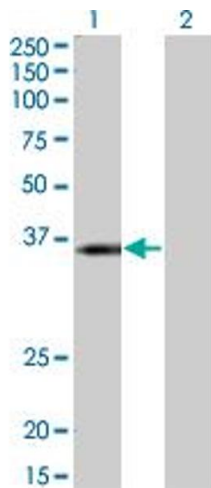
## Application Details

Application Notes:	Optimal working dilution should be determined by the investigator.
Restrictions:	For Research Use only

## Handling

Buffer:	In 1x PBS, pH 7.4
Handling Advice:	Aliquot to avoid repeated freezing and thawing.
Storage:	-20 °C
Storage Comment:	Store at -20°C or lower. Aliquot to avoid repeated freezing and thawing.

## Images

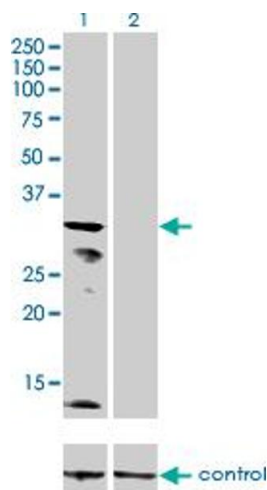


### Western Blotting

**Image 1.** Western Blot analysis of KCNJ15 expression in transfected 293T cell line by KCNJ15 monoclonal antibody (M01), clone 1B2.

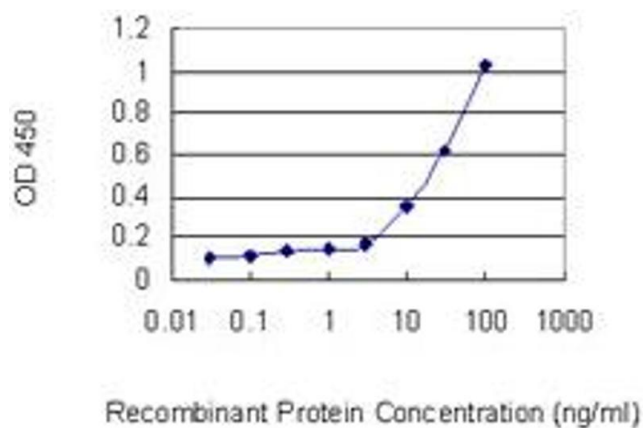
Lane 1: KCNJ15 transfected lysate(42.6 kDa).

Lane 2: Non-transfected lysate.



### Western Blotting

**Image 2.** Western blot analysis of KCNJ15 over-expressed 293 cell line, cotransfected with KCNJ15 Validated Chimera RNAi (Lane 2) or non-transfected control (Lane 1). Blot probed with KCNJ15 monoclonal antibody (M01), clone 1B2. GAPDH ( 36.1 kDa ) used as specificity and loading control.



### ELISA

**Image 3.** Detection limit for recombinant GST tagged KCNJ15 is 3 ng/ml as a capture antibody.

Please check the [product details page](#) for more images. Overall 4 images are available for ABIN561586.