

Datasheet for ABIN561628
anti-Keratin 10 antibody (AA 345-454)



[Go to Product page](#)

2 Images

Overview

Quantity:	100 µg
Target:	Keratin 10 (KRT10)
Binding Specificity:	AA 345-454
Reactivity:	Human
Host:	Mouse
Clonality:	Monoclonal
Conjugate:	This Keratin 10 antibody is un-conjugated
Application:	Western Blotting (WB), ELISA

Product Details

Purpose:	Mouse monoclonal antibody raised against a partial recombinant KRT10.
Immunogen:	KRT10 (NP_000412, 345 a.a. ~ 454 a.a) partial recombinant protein with GST tag. MW of the GST tag alone is 26 KDa.
Sequence:	KELTTEIDNN IEQISSYKSE ITELRRNVQA LEIELQSQLA LKQSLEASLA ETEGRYCVQL SQIQAQISAL EEQLQQIRAE TECQNTEYQQ LLDIKIRLEN EIQTYRSLLE
Clone:	1H6
Isotype:	IgG2b
Cross-Reactivity:	Human
Characteristics:	Antibody Reactive Against Recombinant Protein.

Target Details

Target:	Keratin 10 (KRT10)
Alternative Name:	KRT10 (KRT10 Products)
Background:	Full Gene Name: keratin 10 Synonyms: CK10,K10,KPP
Gene ID:	3858
NCBI Accession:	NM_000421

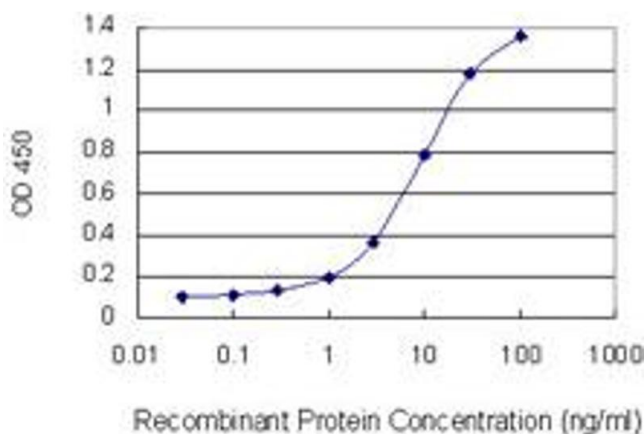
Application Details

Application Notes:	Optimal working dilution should be determined by the investigator.
Restrictions:	For Research Use only

Handling

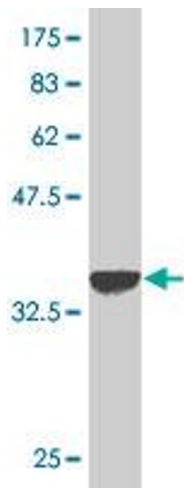
Buffer:	In 1x PBS, pH 7.4
Handling Advice:	Aliquot to avoid repeated freezing and thawing.
Storage:	-20 °C
Storage Comment:	Store at -20°C or lower. Aliquot to avoid repeated freezing and thawing.

Images



ELISA

Image 1. Detection limit for recombinant GST tagged KRT10 is 0.3 ng/ml as a capture antibody.



Western Blotting

Image 2. Western Blot detection against Immunogen (37.84 kDa).