



[Go to Product page](#)

Datasheet for ABIN561630

anti-KRT17 antibody (AA 1-432)

5 Images

1 Publication

Overview

| | |
|----------------------|--|
| Quantity: | 100 µg |
| Target: | KRT17 |
| Binding Specificity: | AA 1-432 |
| Reactivity: | Human |
| Host: | Mouse |
| Clonality: | Monoclonal |
| Conjugate: | This KRT17 antibody is un-conjugated |
| Application: | Western Blotting (WB), Immunofluorescence (IF), ELISA, Immunohistochemistry (Paraffin-embedded Sections) (IHC (p)), Immunoprecipitation (IP) |

Product Details

| | |
|------------|--|
| Purpose: | Mouse monoclonal antibody raised against a full length recombinant KRT17. |
| Immunogen: | KRT17 (AAH00159, 1 a.a. ~ 432 a.a) full-length recombinant protein with GST tag. MW of the GST tag alone is 26 KDa. |
| Sequence: | MTTSIRQFTS SSSIKGSSGL GGGSSRTSCR LSGGLGAGSC RLGSAGGLGS TLGGSSYSSC YSGSGGGYG SSFGGVDGLL AGGEKATMQN LNDRLASYLD KVRALEEANT ELEVKIRDWY QRQAPGPARD YSQQYRTIEE LQNKILTATV DNANILLQID NARLAADDFR TKFETEQALR LSVEADINGL RRVLDELTLA RADLEMQIEN LKEELAYLKK NHEEEMNALR GQVGGEINVE MDAAPGVDLS RIPNEMRDQY EKMAEKNRKD AEDWFFSKTE ELNREVATNS ELVQSGKSEI SELRRTMQAL EIELQSQLSM KASLEGNLAE TENRYCVQLS QIQGLIGSVE EQLAQLRCEM EQQNQEYKIL LDVKTRLEQE IATYRRLLEG EDAHLTQYKK EPVTTTRQVRT IVEEVQDGKV ISSREQVHQT TR |

Product Details

| | |
|-------------------|--|
| Clone: | 2D4-1G9 |
| Isotype: | IgG1 |
| Cross-Reactivity: | Human |
| Characteristics: | Antibody Reactive Against Recombinant Protein. |

Target Details

| | |
|-------------------|--|
| Target: | KRT17 |
| Alternative Name: | KRT17 (KRT17 Products) |
| Background: | Full Gene Name: keratin 17 Synonyms: K17,PC,PC2,PCHC1 |
| Gene ID: | 3872 |

Application Details

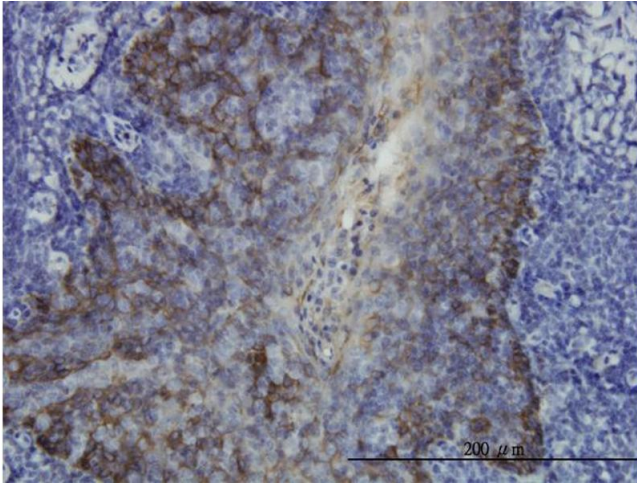
| | |
|--------------------|--|
| Application Notes: | Optimal working dilution should be determined by the investigator. |
| Restrictions: | For Research Use only |

Handling

| | |
|------------------|--|
| Buffer: | In 1x PBS, pH 7.4 |
| Handling Advice: | Aliquot to avoid repeated freezing and thawing. |
| Storage: | -20 °C |
| Storage Comment: | Store at -20°C or lower. Aliquot to avoid repeated freezing and thawing. |

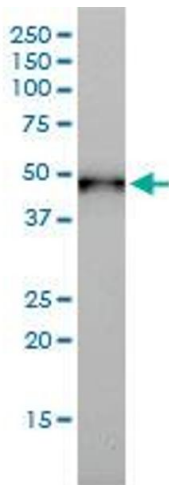
Publications

| | |
|-------------------|--|
| Product cited in: | Turashvili, Bouchal, Baumforth, Wei, Dziechciarkova, Ehrmann, Klein, Fridman, Skarda, Srovnal, Hajduch, Murray, Kolar: "Novel markers for differentiation of lobular and ductal invasive breast carcinomas by laser microdissection and microarray analysis." in: BMC cancer , Vol. 7, pp. 55, (2007) (PubMed). |
|-------------------|--|



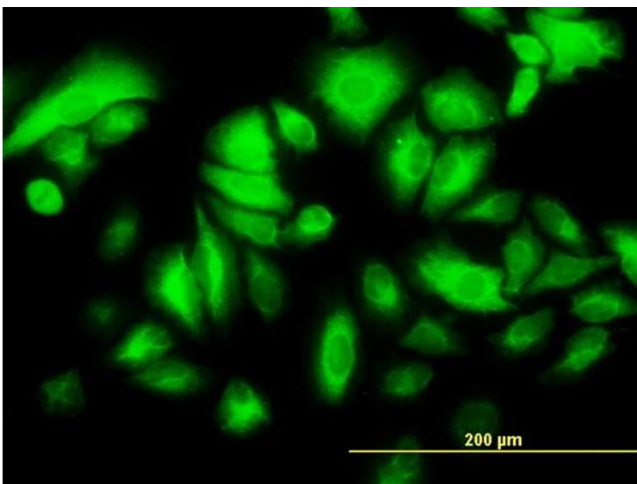
Immunostaining

Image 1. Immunoperoxidase of monoclonal antibody to KRT17 on formalin-fixed paraffin-embedded human tonsil. [antibody concentration 3 ug/ml]



Western Blotting

Image 2. KRT17 monoclonal antibody (M01), clone 2D4-1G9 Western Blot analysis of KRT17 expression in A-431 .



Immunofluorescence

Image 3. Immunofluorescence of monoclonal antibody to KRT17 on HeLa cell. [antibody concentration 25 ug/ml]

Please check the [product details page](#) for more images. Overall 5 images are available for ABIN561630.