



[Go to Product page](#)

Datasheet for ABIN561642

## anti-Laminin beta 3 antibody (AA 1064-1171)

### 1 Image

#### Overview

Quantity:	50 µL
Target:	Laminin beta 3 (LAMB3)
Binding Specificity:	AA 1064-1171
Reactivity:	Human
Host:	Mouse
Clonality:	Polyclonal
Conjugate:	This Laminin beta 3 antibody is un-conjugated
Application:	Western Blotting (WB), ELISA

#### Product Details

Purpose:	Mouse polyclonal antibody raised against a partial recombinant LAMB3.
Immunogen:	LAMB3 (NP_000219, 1064 a.a. ~ 1171 a.a) partial recombinant protein with GST tag.
Sequence:	AEGASEQALS AQEGFERIKQ KYAELKDRLG QSSMLGEQGA RIQSVKTEAE ELFGETMEMM DRMKDMELEL LRGSQAIMLR SADLTGLEKR VEQIRDHING RVLYYATC
Cross-Reactivity:	Human
Characteristics:	Antibody Reactive Against Recombinant Protein.

#### Target Details

Target:	Laminin beta 3 (LAMB3)
Alternative Name:	LAMB3 ( <a href="#">LAMB3 Products</a> )

## Target Details

Background:	Full Gene Name: laminin, beta 3 Synonyms: BM600-125KDA,FLJ99565,LAM5,LAMNB1
Gene ID:	3914
NCBI Accession:	<a href="#">NM_000228</a>
Pathways:	<a href="#">Brown Fat Cell Differentiation</a>

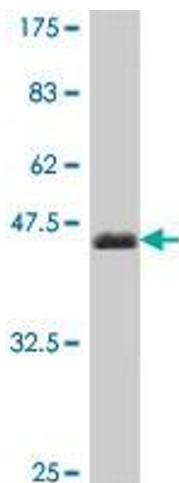
## Application Details

Application Notes:	Optimal working dilution should be determined by the investigator.
Restrictions:	For Research Use only

## Handling

Format:	Liquid
Buffer:	50 % glycerol
Handling Advice:	Aliquot to avoid repeated freezing and thawing.
Storage:	-20 °C
Storage Comment:	Store at -20°C or lower. Aliquot to avoid repeated freezing and thawing.

## Images



### Western Blotting

**Image 1.** Western Blot detection against Immunogen (37.99 KDa) .