

Datasheet for ABIN561646

**anti-Laminin gamma 1 antibody (AA 1-38)****3** Images[Go to Product page](#)

## Overview

Quantity:	100 µg
Target:	Laminin gamma 1 (LAMC1)
Binding Specificity:	AA 1-38
Reactivity:	Human
Host:	Mouse
Clonality:	Monoclonal
Conjugate:	This Laminin gamma 1 antibody is un-conjugated
Application:	Western Blotting (WB), ELISA, Proximity Ligation Assay (PLA)

## Product Details

Purpose:	Mouse monoclonal antibody raised against a full length recombinant LAMC1.
Immunogen:	LAMC1 (AAH15586, 1 a.a. ~ 38 a.a) full-length recombinant protein with GST tag. MW of the GST tag alone is 26 KDa.
Sequence:	MNKRRTSHRI WKNKLPEYMR RPKGPVTKLW RSMPAWLS
Clone:	M1
Isotype:	IgG2a
Cross-Reactivity:	Human
Characteristics:	Antibody Reactive Against Recombinant Protein.

Target Details

Target:	Laminin gamma 1 (LAMC1)
Alternative Name:	LAMC1 ( <a href="#">LAMC1 Products</a> )
Background:	Full Gene Name: laminin, gamma 1 (formerly LAMB2) Synonyms: LAMB2,MGC87297
Gene ID:	3915

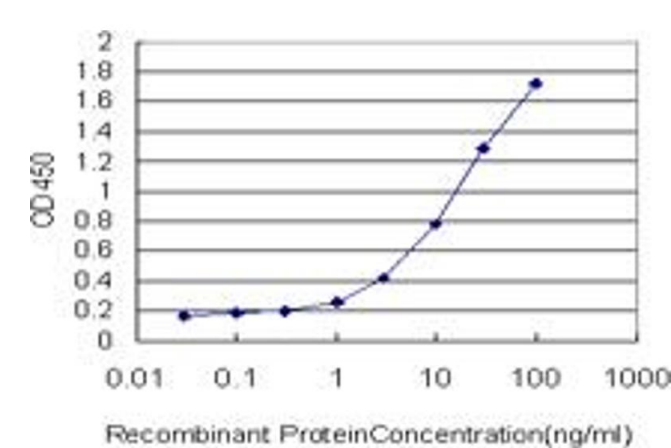
Application Details

Application Notes:	Optimal working dilution should be determined by the investigator.
Restrictions:	For Research Use only

Handling

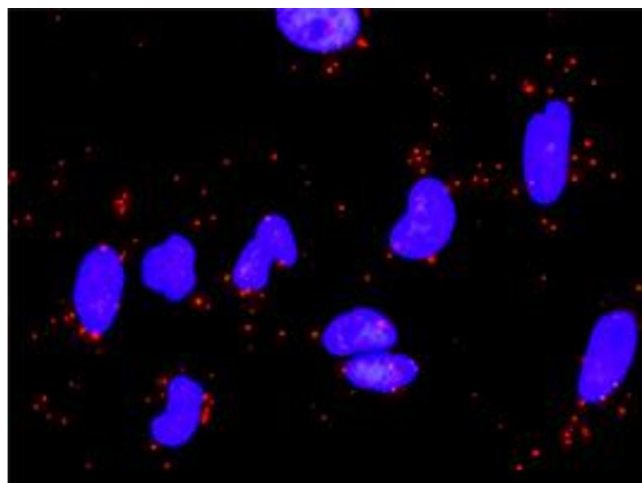
Buffer:	In 1x PBS, pH 7.4
Handling Advice:	Aliquot to avoid repeated freezing and thawing.
Storage:	-20 °C
Storage Comment:	Store at -20°C or lower. Aliquot to avoid repeated freezing and thawing.

Images



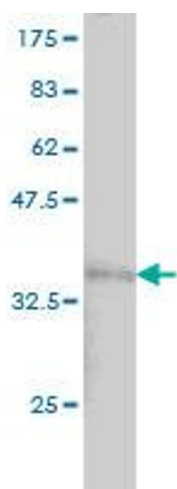
**ELISA**

**Image 1.** Detection limit for recombinant GST tagged LAMC1 is approximately 0.03ng/ml as a capture antibody.



### Proximity Ligation Assay

**Image 2.** Proximity Ligation Analysis of protein-protein interactions between LAMA5 and LAMC1. HeLa cells were stained with anti-LAMA5 rabbit purified polyclonal 1:1200 and anti-LAMC1 mouse monoclonal antibody 1:50. Each red dot represents the detection of protein-protein interaction complex, and nuclei were counterstained with DAPI (blue).



### Western Blotting

**Image 3.** Western Blot detection against Immunogen (29.92 kDa) .