



Datasheet for ABIN561659
anti-LETM1 antibody (AA 601-708)



[Go to Product page](#)

8 Images

6 Publications

Overview

Quantity:	100 µg
Target:	LETM1
Binding Specificity:	AA 601-708
Reactivity:	Human
Host:	Mouse
Clonality:	Monoclonal
Conjugate:	This LETM1 antibody is un-conjugated
Application:	Western Blotting (WB), ELISA, Immunofluorescence (IF), Immunoprecipitation (IP), Immunohistochemistry (Paraffin-embedded Sections) (IHC (p))

Product Details

Purpose:	Mouse monoclonal antibody raised against a partial recombinant LETM1.
Immunogen:	LETM1 (NP_036450, 601 a.a. ~ 708 a.a) partial recombinant protein with GST tag. MW of the GST tag alone is 26 KDa.
Sequence:	ESKASKRLTK RVQQMIGQID GLISQLEMDQ QAGKLAPANG MPTGENVISV AELINAMKQV KHIPESKLTLS LAAALDENKD GKVNIDDLK VIELVDKEDV HISTSQVA
Clone:	6F7
Isotype:	IgG1
Cross-Reactivity:	Human
Characteristics:	Antibody Reactive Against Recombinant Protein.

Target Details

Target:	LETM1
Alternative Name:	LETM1 (LETM1 Products)
Background:	Full Gene Name: leucine zipper-EF-hand containing transmembrane protein 1 Synonyms:
Gene ID:	3954
NCBI Accession:	NM_012318

Application Details

Application Notes:	Optimal working dilution should be determined by the investigator.
Restrictions:	For Research Use only

Handling

Buffer:	In 1x PBS, pH 7.4
Handling Advice:	Aliquot to avoid repeated freezing and thawing.
Storage:	-20 °C
Storage Comment:	Store at -20°C or lower. Aliquot to avoid repeated freezing and thawing.

Publications

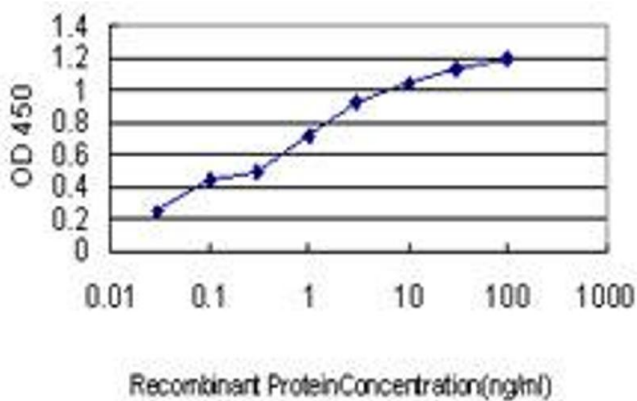
Product cited in:	<p>Chen, Yang, Liu, Piao, Zhang, Lin, Li: "High expression of leucine zipper-EF-hand containing transmembrane protein 1 predicts poor prognosis in head and neck squamous cell carcinoma." in: BioMed research international, Vol. 2014, pp. 850316, (2014) (PubMed).</p> <p>Doonan, Chandramoorthy, Hoffman, Zhang, Cárdenas, Shanmughapriya, Rajan, Vallem, Chen, Foskett, Cheung, Houser, Madesh: "LETM1-dependent mitochondrial Ca²⁺ flux modulates cellular bioenergetics and proliferation." in: FASEB journal : official publication of the Federation of American Societies for Experimental Biology, Vol. 28, Issue 11, pp. 4936-49, (2014) (PubMed).</p> <p>Shin, Chung, Kang, Jiang, Yu, Han, Chae, Moon, Jang, Cho: "Co-delivery of LETM1 and CTMP synergistically inhibits tumor growth in H-ras12V liver cancer model mice." in: Cancer gene therapy, Vol. 20, Issue 3, pp. 186-94, (2013) (PubMed).</p>
-------------------	--

Piao, Li, Kim, Sohn, Yang, Park, Byun, Won, Hong, Hur, Seok, Shong, Sack, Brazil, Hemmings, Park: "Regulation of OPA1-mediated mitochondrial fusion by leucine zipper/EF-hand-containing transmembrane protein-1 plays a role in apoptosis." in: **Cellular signalling**, Vol. 21, Issue 5, pp. 767-77, (2009) ([PubMed](#)).

Piao, Li, Kim, Byun, Huang, Hwang, Yang, Park, Won, Hong, Hur, Seok, Shong, Cho, Brazil, Hemmings, Park: "Association of LETM1 and MRPL36 contributes to the regulation of mitochondrial ATP production and necrotic cell death." in: **Cancer research**, Vol. 69, Issue 8, pp. 3397-404, (2009) ([PubMed](#)).

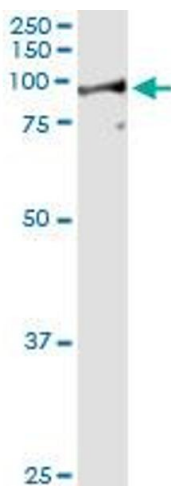
There are more publications referencing this product on: [Product page](#)

Images



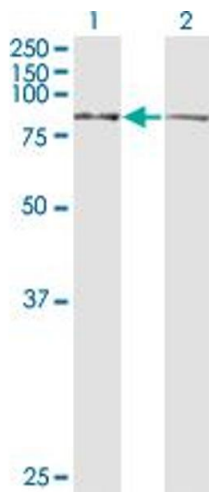
ELISA

Image 1. Detection limit for recombinant GST tagged LETM1 is approximately 0.03ng/ml as a capture antibody.



Western Blotting

Image 2. Immunoprecipitation of LETM1 transfected lysate using anti-LETM1 monoclonal antibody and Protein A Magnetic Bead , and immunoblotted with LETM1 MaxPab rabbit polyclonal antibody.



Western Blotting

Image 3. Western Blot analysis of LETM1 expression in transfected 293T cell line by LETM1 monoclonal antibody (M03), clone 6F7.

Lane 1: LETM1 transfected lysate(83.4 kDa).

Lane 2: Non-transfected lysate.

Please check the [product details page](#) for more images. Overall 8 images are available for ABIN561659.